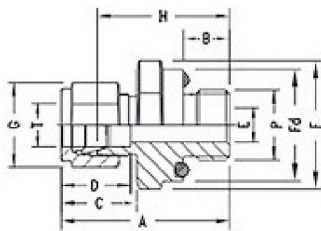


O SEAL MALE CONNECTOR



INCH OD Tubes X Male ISO* Parallel Threads

T Tube OD	P ISO Male	A	B	C	D	E min.	F A/F	Fd	G A/F	H	O Ring Part No.	FITEXCEL PART NO.
1/8	1/8	32.8	7.1	15.3	12.7	2.4	19	18.8	11	26.2	2 OPN	OSMC-595-R
1/4	1/8	35.0	7.1	17.8	15.3	4.8	19	18.8	14	27.7	2 OPN	OSMC-596-R
1/4	1/4	40.0	11.2	17.8	15.3	7.1	24	23.6	14	32.6	4OPN	OSMC-597-R
3/8	1/4	41.5	11.2	19.3	16.8	7.1	24	23.6	17	34.1	4 OPN	OSMC-599-R
3/8	3/8	42.2	11.2	19.3	16.8	7.1	30	29.8	17	34.8	6 OPN	OSMC-600-R
3/8	1/2	47.7	14.2	19.3	16.8	9.6	32	31.8	17	40.3	8 OPN	OSMC-601-R
1/2	3/8	44.5	10.4	21.8	22.9	10.4	30	29.8	22	34.4	6 OPN	OSMC-602-R
1/2	1/2	50.4	14.2	21.8	22.9	11.9	32	31.8	22	40.3	8 OPN	OSMC-603-R
5/8	1/2	50.4	14.2	21.8	24.4	11.9	32	31.8	22	40.3	8 OPN	OSMC-604-R
3/4	1/2	50.4	14.2	21.8	24.4	15.8	32	31.8	28.5	40.3	8 OPN	OSMC-605-R
3/4	3/4	53.5	15.7	21.8	24.4	15.8	38	37.8	28.5	43.4	12 OPN	OSMC-606-R
1	3/4	58.2	15.7	26.4	31.2	22.3	38	37.8	38	46.0	12OPN	OSMC-607-R
1	1	62.2	18.3	26.4	31.2	27.6	45	44.0	38	50.0	16 OPN	OSMC-608-R

METRIC OD Tubes X Male ISO*Parallel Threads

T Tube OD	P ISO Male	A	B	C	D	E min.	F A/F	Fd	G A/F	H	O Ring Part No.	FITEXCEL PART NO.
3	1/8	32.8	7.1	15.3	12.9	2.4	19	18.8	11	26.2	2 OPN	OSMC-609-R
3	1/4	37.6	11.2	15.3	12.9	2.4	24	23.8	11	31.0	4 OPN	OSMC-610-R
6	1/4	40.1	11.2	17.7	15.3	4.8	24	23.8	14	32.7	4 OPN	OSMC-611-R
6	3/8	40.8	11.2	17.7	15.3	4.8	30	29.8	14	33.4	6 OPN	OSMC-612-R
8	1/4	40.9	11.2	18.6	16.2	6.3	24	23.8	16	33.4	4 OPN	OSMC-613-R
10	1/4	41.0	11.2	19.5	17.2	7.1	24	23.8	17	33.4	4 OPN	OSMC-614-R
10	3/8	42.6	11.2	19.5	17.2	7.1	30	29.8	17	35.0	6 OPN	OSMC-615-R
10	1/2	48.0	14.2	19.5	17.2	7.9	32	31.8	17	40.4	8 OPN	OSMC-616-R
12	1/4	44.3	11.2	22.0	22.8	7.1	24	21.8	22	34.2	4 OPN	OSMC-617-R
12	3/8	45.1	11.2	22.0	22.8	7.9	30	29.8	22	34.0	6 OPN	OSMC-618-R
12	1/2	50.5	14.3	22.0	22.8	9.5	32	31.8	22	40.4	8 OPN	OSMC-619-R
16	1/2	50.5	14.3	22.0	24.4	11.9	32	31.8	25	40.4	8 OPN	OSMC-620-R
20	3/4	55.1	15.7	22.0	26.0	15.8	38	37.0	32	45.0	12 OPN	OSMC-621-R
25	3/4	58.1	15.7	26.5	31.3	15.8	38	38	38	45.8	12 OPN	OSMC-622-R
25	1	62.3	18.3	26.5	31.3	19.8	45	44.0	38	50.0	16 OPN	OSMC-623-R