



iGENE LABSERVE
Innovative • Interactive • Intuitive

GEL DOCUMENTATION SYSTEM



Address: 16/2 [Ground Floor] Ashok
Nagar [New Delhi-110018]
Office: - 011-79613060
Email: info@igenels.com
Web:-www.igenels.com

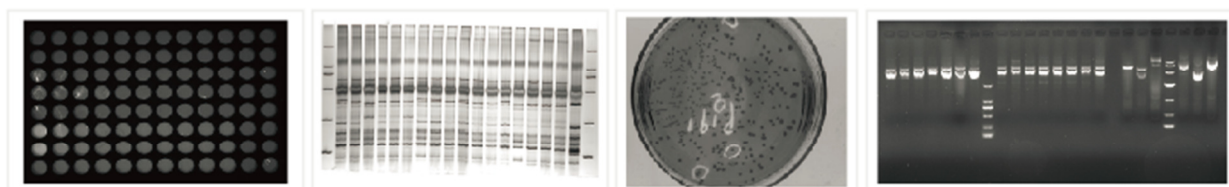
Description

IG-618GD Series Gel Documentation and Analysis System is designed for the detection and documentation of nucleic acids and proteins. It adopts a high resolution and high sensitive scientific CCD-Camera, which enables the instrument to capture utter weak signals under extremely low illumination condition. The automatic controls and the intuitive software we offered can help the researchers to get rid of the complicated operation process and increase the experimental efficiency.

Applicable Dyes

DNA/RNA detection : EthidiumBromide , SYBR™ Gold , SYBR™ Green , SYBR™ Safe , Gel Star™ , Texas Red , Fluorescein ;

Protein Detection : Coomassie Brilliant Blue , Silver Staining , Sypro™ Red , Sypro™ Orange , Pro-QDiamond , Deep Purple ;



Functions

- ❖ High resolution scientific CCD Camera
- ❖ High sensitivity and low noise
- ❖ Ultrafast lens
- ❖ Numerical adjusting focal length and aperture
- ❖ Automatic control module
- ❖ UV protection



Features



RIM Moulding Polymer

The Environmental friendly reaction injection moulding technique has been used to designed door and front panel.



Upgradable options

Easily upgradable system with any of this hardware module as per applications of researchers

1. UV Transmission
2. UV + Blue Light Transmission
3. UV+ Blue + White light transmission



Better User Experience

Depending on application, only use Arabic numerals which are easily adjustable as per different application automatically instead of professional parameters of aperture and focus.



SMART Transilluminator

Compared with traditional UV Transilluminator, the NON-Lamp design provides excellent uniformity of transmission with reduced background noise



Blue and White Light Transilluminator

The magnetic thimble interface realizes free switches between the blue light and white light transmission. The touchable brightness adjustment switch facilitates the observation and recovery.

Specifications

Model	IG-618GD
CCD	5.0 Megapixels/D 16bit; pixel density : 16 bit
Pixel Size	2.4μm x 2.4μm
Lens	Motorized F1.2 ultrafast lens
White light transmission	LED white light plate; Sample area : 20*32cm
Epi-white light	Double white LED
UV Transmission	Sample area: 21*26cm, Wavelength 302nm ; (Optional 254nm, 365nm)
Filters	Standard 590nm ; Other wavelengths optional

G

Address: 16/2 |Ground Floor|
Ashok Nagar| New Delhi-110018|
Office: - 011-79613060|
Email: info@igenels.com|www.igenels.com



Software

Gel Capture

- Precise and automatic exposure function
- Advanced pixel binning technology increases the sensitivity of the systems
- Automatic access of capture parameters
- Image rotation, cropping and counter colour options
- Convenient image navigation and browsing

Analysis

- Automatic recognition and numbering of Gel Bands.
- Calculation of molecular weight of each band.
- Option of saving the result in xls format.
- Calculation of optical density for quantitative analysis
- Optimization of visual effects by wiping background mode.

