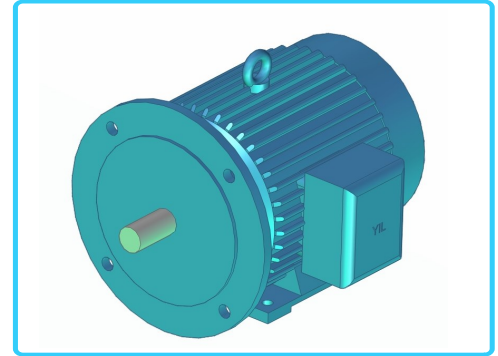


## ■ ELECTRIC MOTOR - CAGE INDUCTION

**YIL-Squirrel-Cage Induction Electrical Motors** are suitable for the most industrial applications, these motors are precision-balanced adjustment, low vibration & low noise motors. These motors are available in the range of 63 to 132M frame size.



Graphical symbol



## ■ Features

- Motors are designed for continuous(S1) Duty cycle and these can safely withstand a starting time of 5 to 7 sec for 2 consecutive starts from cold condition.
- These are provided with class 'F' Insulation.
- These motors are designed for ambient temperature of 45°C max.
- Two Earthing terminals are provided , one on the body & other in the terminal box

## ■ Specifications

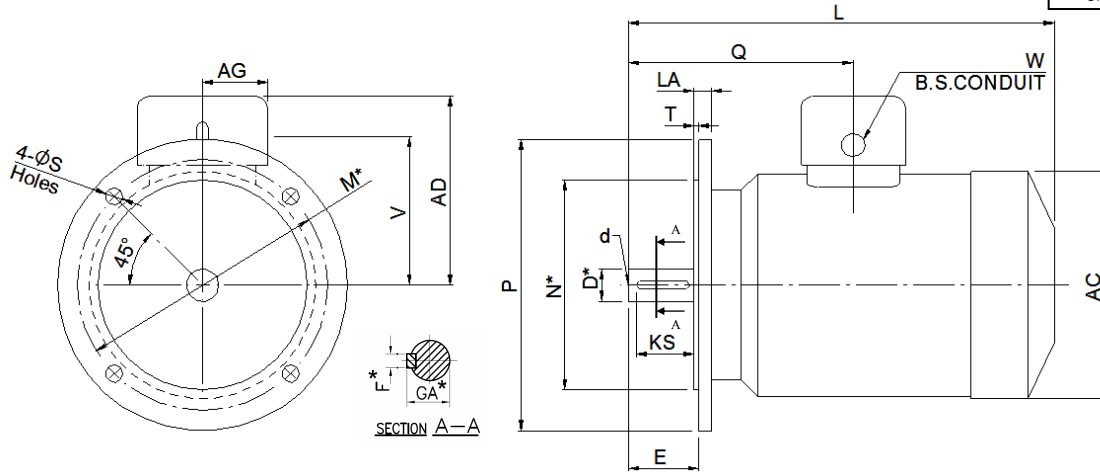
Model code	Voltage V	Degree of Protection	Class of Insulation	Frequency Hz	Ambient Temperature °C	Appx weight Kg
YEM-0.75KW-****	415v±10%	IP-55	Class-F:155°C	50Hz±5%	45°C	8
YEM-1.1KW-****						10.5
YEM-1.5KW-****						13
YEM-2.2KW-****						18
YEM-3.7KW-****						24
YEM-5.5KW-****						60
YEM-7.5KW-****						70

## ■ Model Number Designation

YEM	-1.5KW	-4P	3PH	415V	50HZ	-B35	-F	-IP55	IE2	S1
Series Number	Motor Rating	Pole	Phase	Voltage V	Frequency Hz	Mounting Type	Insulation	Degree of protection	Efficiency Class	Duty Class
YEM : ELECTRIC MOTOR	0.55KW : 0.55 kW	4P : 1500 RPM	3PH : 3 Phase	415V: 415 V	50HZ : 50Hz	B3 : Foot mounting B5 : Flange Mounting B35 : Foot cum Flange Mounting	F : Class-F -155°C	IP55 : IP55	IE2 : IE2	S1 : Continuous
	0.75KW : 0.75 kW									
	1.1KW : 1.1 kW									
	1.5KW : 1.5 kW									
	2.2KW : 2.2 kW									
	3.7KW : 3.7 kW									
	5.5KW : 5.5 kW									
7.5KW : 7.5 kW										

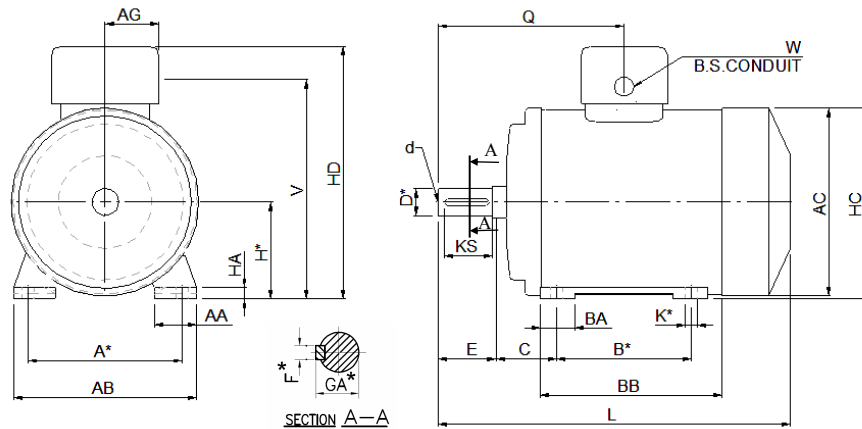
## ■ B5 : Flange Mounting Type.

Dimensions in Millimeters



MOTOR DETAILS		FIXING				GENERAL					TERMINAL BOX				SHAFT					
MODEL CODE	Frame Size	P	N*	M*	S	T	LA	AD	AC	L	V	Q	AG	W-B.S. CONDUIT	D*	E	F*	GA*	KS	d
YEM-0.55KW-**	80	200	130	165	12	4	10	134	157	267	105	112	40	3/4"	19	40	6	22	35	M6
YEM-0.75KW-**																				
YEM-1.1KW-**	90S	200	130	165	12	4	10	140	174	302	109	139	52	3/4"	24	50	8	27	45	M8
YEM-1.5KW-**	90L	200	130	165	12	4	10	140	174	327	109	153	52	3/4"	24	50	8	27	45	M8
YEM-2.2KW-**	100L	250	180	215	15	4	11	157	195	366	125	152	56	1"	28	60	8	31	55	M10
YEM-3.7KW-**	112M	250	180	215	15	4	11	170	220	388	137	157	56	1"	28	60	8	31	55	M10
YEM-5.5KW-**	132S	300	230	265	15	4	12	206	260	460	167	196	63	1"	38	80	10	41	70	M12
YEM-7.5KW-**	132M	300	230	265	15	4	12	206	260	500	167	215	63	1"	38	80	10	41	70	M12

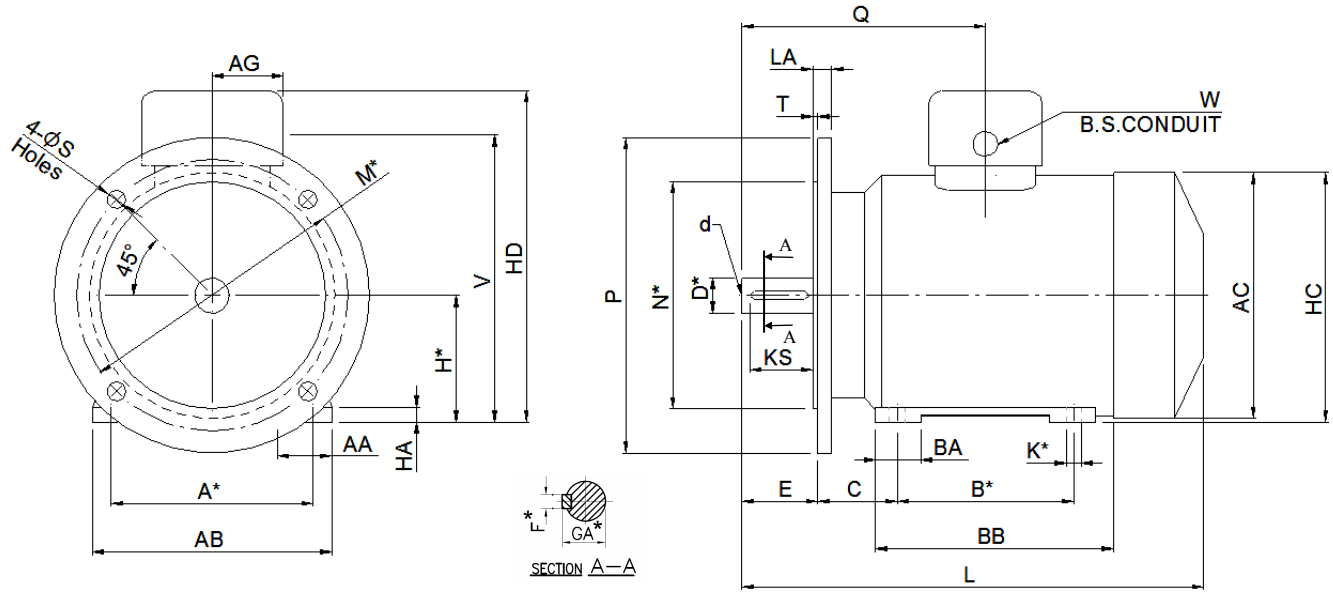
## ■ B3 : Foot Mounting Type.



MOTOR DETAILS		FIXING					GENERAL						TERMINAL BOX				SHAFT								
MODEL CODE	Frame Size	A*	B*	C	H*	K*	AB	BB	AA	BA	HA	HC	HD	L	AC	V	Q	AG	W-B.S. CONDUIT	D*	E	F*	GA*	KS	d
YEM-0.55KW-**	80	125	100	50	80	10	150	124	31	35	9	159	214	267	157	185	112	40	3/4"	19	40	6	21.5	35	M6
YEM-0.75KW-**																									
YEM-1.1KW-**	90S	140	100	56	90	10	168	125	34	31.5	12	177	230	320	174	199	139	52	3/4"	24	50	8	27	45	M8
YEM-1.5KW-**	90L	140	125	56	90	10	168	150	34	31.5	12	177	230	327	174	199	153	52	3/4"	24	50	8	27	45	M8
YEM-2.2KW-**	100L	160	140	63	100	12	190	174	43.3	36	12	198	257	366	192	225	152	56	1"	28	60	8	31	55	M10
YEM-3.7KW-**	112M	160	140	70	112	12	220	174	47	36	12	222	282	388	220	250	157	56	1"	28	60	8	31	55	M10
YEM-5.5KW-**	132S	216	140	89	132	12	256	180	64	50	17	262	338	460	260	300	196	63	1"	38	80	10	41	70	M12
YEM-7.5KW-**	132M	216	178	89	132	12	256	218	64	54	17	262	338	500	260	300	215	63	1"	38	80	10	41	70	M12

Accessories

**■ B35 : Foot cum Flange Mounting Type**



MOTOR DETAILS		FIXING					GENERAL							TERMINAL BOX				SHAFT							
MODEL CODE	Frame Size	A*	B*	C	H*	K*	AB	BB	AA	BA	HA	HC	HD	L	AC	V	Q	AG	W-B.S. CONDUIT	D*	E	F*	GA*	KS	d
YEM-0.55KW-**	80	125	100	50	80	10	150	124	31	35	9	159	214	267	157	185	112	40	3/4"	19	40	6	21.5	35	M6
YEM-0.75KW-**																									
YEM-1.1KW-**	90S	140	100	56	90	10	168	125	34	31.5	12	177	230	320	174	199	139	52	3/4"	24	50	8	27	45	M8
YEM-1.5KW- **	90L	140	125	56	90	10	168	150	34	31.5	12	177	230	327	174	199	153	52	3/4"	24	50	8	27	45	M8
YEM-2.2KW-**	100L	160	140	63	100	12	190	174	43.3	36	12	198	257	366	192	225	152	56	1"	28	60	8	31	55	M10
YEM-3.7KW-**	112M	160	140	70	112	12	220	174	47	36	12	222	282	388	220	250	157	56	1"	28	60	8	31	55	M10
YEM-5.5KW-**	132S	216	140	89	132	12	256	180	64	50	17	262	338	460	260	300	196	63	1"	38	80	10	41	70	M12
YEM-7.5KW-**	132M	216	178	89	132	12	256	218	64	54	17	262	338	500	260	300	215	63	1"	38	80	10	41	70	M12

\* Refer Table-A for Tolerance

TABLE A

Dimension	Tolerance	Specification	Dimension	Tolerance	Specification	
A,B	±0.75	IS : 1231	D,DA	j6	11,14,19,24,28Ø	
H	-0.5			UPTO 280	k6	38,42,48Ø
	-1			OVER 280	m6	55,60,65,75,80,95Ø
K	+0.360		7,10Ø	GA,GC,F,FA		IS : 2048
	+0.430		12,15Ø	d5(centering)		IS : 2540
	+0.520	19,24,28Ø				

**■ Operating Conditions**

- Environmental Conditions : Non –Hazardous, Relative Humidity: less than 90% RH.  
Altitude : less than 1000 meters.
- Power Source Conditions : voltage±10%,Frequency±5% (10% Max. Combined Voltage & frequency).
- Method of Starting : Direct Online Starting.
- Direction of Rotation : Suitable for Bi-Directional operation.
- Test Procedure : As per std. IS:325, IS:12615, IS:15999.

## ■ Ordering Information

Example : Electric motor having a 1.5kW,4Pole,3 phase & 415 V AC With Foot cum Flange mounting type & S1  
Duty cycle : **YEM-1.5KW-4P3PH415V50HZ-B35-F-IP55IE2-S1** , Material Number : **88000001109**

SL.No	Model Code	Material Number
1	YEM-0.55KW-4P3PH415V50HZ-B3-F-IP55IE2S1	88000001098
2	YEM-0.55KW-4P3PH415V50HZ-B5-F-IP55IE2S1	88000001099
3	YEM-0.55KW-4P3PH415V50HZ-B35-F-IP55IE2S1	88000001100
4	YEM-0.75KW-4P3PH415V50HZ-B3-F-IP55IE2S1	88000001101
5	YEM-0.75KW-4P3PH415V50HZ-B5-F-IP55IE2S1	88000001102
6	YEM-0.75KW-4P3PH415V50HZ-B35-F-IP55IE2S1	88000001103
7	YEM-1.1KW-4P3PH415V50HZ-B3-F-IP55IE2S1	88000001104
8	YEM-1.1KW-4P3PH415V50HZ-B5-F-IP55IE2S1	88000001105
9	YEM-1.1KW-4P3PH415V50HZ-B35-F-IP55IE2S1	88000001106
10	YEM-1.5KW-4P3PH415V50HZ-B3-F-IP55IE2S1	88000001107
11	YEM-1.5KW-4P3PH415V50HZ-B5-F-IP55IE2S1	88000001108
12	YEM-1.5KW-4P3PH415V50HZ-B35-F-IP55IE2S1	88000001109
13	YEM-2.2KW-4P3PH415V50HZ-B3-F-IP55IE2S1	88000001110
14	YEM-2.2KW-4P3PH415V50HZ-B5-F-IP55IE2S1	88000001111
15	YEM-2.2KW-4P3PH415V50HZ-B35-F-IP55IE2S1	88000001112
16	YEM-3.7KW-4P3PH415V50HZ-B3-F-IP55IE2S1	88000001113
17	YEM-3.7KW-4P3PH415V50HZ-B5-F-IP55IE2S1	88000001114
18	YEM-3.7KW-4P3PH415V50HZ-B35-F-IP55IE2S1	88000001115
19	YEM-5.5KW-4P3PH415V50HZ-B3-F-IP55IE2S1	88000001116*
20	YEM-5.5KW-4P3PH415V50HZ-B5-F-IP55IE2S1	88000001117*
21	YEM-5.5KW-4P3PH415V50HZ-B35-F-IP55IE2S1	88000001118*
22	YEM-7.5KW-4P3PH415V50HZ-B3-F-IP55IE2S1	88000001119*
23	YEM-7.5KW-4P3PH415V50HZ-B5-F-IP55IE2S1	88000001120*
24	YEM-7.5KW-4P3PH415V50HZ-B35-F-IP55IE2S1	88000001121*

\* Under development

**Note:** 1. Applied for **BIS Certification** as per **std. IS:12615-207**.  
2. Please contact YIL For other types and motor ratings

For further information contact us  
**YUKEN INDIA LTD.**

P. B. No. 5, Koppalthimmanahalli Village,  
H. Hosakote Gram Panchayat, Lakkur Hobli,  
Malur Taluk, Kolar District- 563130, Karnataka  
**Email:** marketing@yukenindia.com

YEM Series Electric Motor