



SOURCING STORING SUPPLY

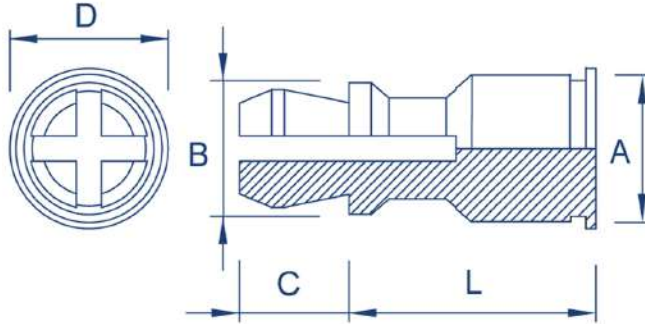
Part Code:

MV-SSS / MV-SSC / MV-SSA



Clip-on Standoffs

Zinc Plated Steel: MV-SSS | Stainless Steel: MV-SSC | Aluminium: MV-SSA



Metric Dimensions

Top panel mounting hole diameter	Length code 'L' mm ± 0.13									A max	B ± 0.13	C ± 0.13	D ± 0.13	Hole size +0.08
Metric 4mm	8	10	12	14	16	18	20	22	25	5.39	4.78	3.58	6.35	5.4

Metric Performance Data: MV-SSS - MV-SSC - MV-SSA

Type	Steel Zinc	Stainless Steel	Aluminium
Installation (kN)	15.6	16.5	6.7
Pushout (kN)	1785	1785	881
Test material	1.5mm Steel	1.5mm Steel	1mm Aluminium

Part number	Panel 1 - Metal HRB50					Panel 2 - PC board or metal			
	Bottom mounting hole +0.08	Hardness max.	Thickness min.	Edge distance min.	Location tolerance max.	Top mounting hole +0.08	Hardness max.	Thickness range	Edge distance min.
MV-SSS	5.41	HRB 60	1	6.6	± 0.13	4	No limit	1-1.8	2.54
MV-SSC		HRB 70							
MV-SSA		HRB 50							

These tests have been conducted in laboratory conditions, these figures should therefore be used for guidance only.

Mob : 9483389951 | Off : 9901633822 | support@mvdfasteners.com | mvdfasteners@gmail.com

693/186/16 | Kanika Nagar | Kachanayakana Halli | Bommasandra Ind. Area | Bangalore - 99