



VISHAWKARMA SCIENTIFIC WORKS

An ISO 9001 : 2015 Certified Company

761, Dina Mandi, Ambala Cantt, Haryana-133001 website: www.viskawmeters.co.in
 Contact us: +91 9953241920, 8882030155 Email: viskawmeters@gmail.com

MAXIMUM DEMAND METER

DESCRIPTION:

For measuring mean maximum current value, when it is 8min or 15 min or 30min.

Model: MDI-M96

Accuracy: Class 3.0

Specification: 8min 5A, 15min 5A, 30min 5A, 8min 1A, 15min 1A

With bimetal movement and thermal delayed indicator for measuring the maximum meanload during a period of 8 or 15 minutes, eats red maximum pointer. Lead seal can protect resetting knob of maximum pointer. Response time 8 or 15,30 minutes(to be specified when ordering).

Heat resistance: Case of non-combustible plastic material.

Changeable scale: All scales with printing technique. The dial plate with different scale which is at the same internal value can be changeable. But the accuracy is unchangeable. **Fastening:** By means of nuts, absolutely safe, fast, robust, side by side. **Mounting depth:** Max 43mm.

Maximum Demand meter is used for monitoring thermal loading in Power Distribution systems, Networks, Machines etc. It indicates maximum loading current over a period. Short-period current peaks are not registered but long overloads are registered. In the Maximum Demand meter the measuring current flows through the bimetal spiral which is temperature sensitive. The free end of the spiral is connected to a black measuring pointer. The moving system is activated by heat generated by the current flowing through the spiral. The instrument is provided with an additional red slave pointer with a higher friction, which makes it to remain at its maximum position, which determines the maximum average loading current. The high torque of metallic movement drags the red pointer along with the black pointer. The red pointer remains stationary at the maximum value reached. This can be reset by rotating the knob provided on front face. To prevent false indication due to fluctuations in ambient temperature, an additional bimetallic spiral is wound in opposite direction, which is mounted on the same spindle to compensate variation in temperature from 10 to +55 degrees Centigrade. Frequently there is a need to measure instantaneous current simultaneously & hence moving iron movement having the same range is incorporated in the same meter.

FEATURES:

- RMS measurement of maximum current.
- Long current peaks are registered.
- Red pointer to indicate maximum current reached.
- Analogue Indication.
- 20% overload capacity.
- Instantaneous current measurement. (3 Pointer)
- Sturdy movement.

ELECTRICAL SPECIFICATONS:

Type : BIMETALLIC; ANALOGUE AMMETER.

Operating Current : 1 Amp or 5Amp

Frequency : 40 ~ 65Hz.

Accuracy : $\pm 3\%$ for resetable red pointer (Bimetallic). $\pm 1.5\%$ instantaneous value pointer (Moving Iron)

Thermal Lag (Setting Time) 15 minutes (standard) & 8 minutes (on special request).

VA Burden : Approx. 3.5VA for Bimetallic Ammeters &, Approx. 4VA for Bimetallic And Moving Iron Ammeter.

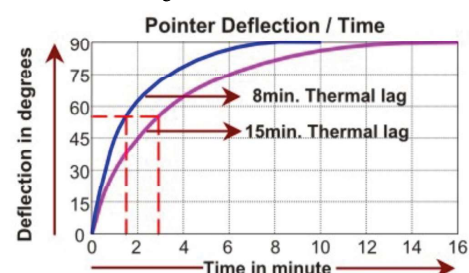
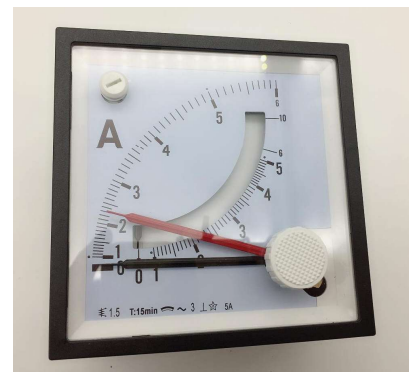
Insulation resistance : Greater than 20 Mohms at 500V DC

Dielectric test : 2kV rms for 1 minute.

Operating temp : -10°C to 55°C (for Analogue Instrument)

Storage Temp : -20°C to 70°C

Humidity ; upto 95% RH





ISO 9001

VISHAWKARMA SCIENTIFIC WORKS

An ISO 9001 : 2015 Certified Company

761,Dina Mandi,Ambala Cantt,Haryana-133001 website: www.viskawmeters.co.in

Contact us:+91 9953241920, 8882030155

Email: viskawmeters@gmail.com

MECHANICAL SPECIFICATIONS:

MODEL	MDIS 96A	MDID 96A	
SIZE(mm)	96 x 96 x 70	96 x 96 x 70	
PANEL CUTOOUT(mm)	92 X 92 ^{+0.8}	92 x 92 ^{+0.8}	
SCALE LENGTH (Approx)OF BIMETALLIC SYSTEM	90mm	90mm	
SCALE LENGTH(Approx) OF MI SYSTEM	N.A.	70mm	
WEIGHT(Approx)	0.230 kg	0.250 kg	
PRIMARY CURRENT	SECONDARY CURRENT : 5AMPS OR 1 AMPS -SCALE-		
MODEL	MDIS 96A	MDID 96A	
100%	120%	120%	200%
10A	12A	12A	0.....10/20A
15A	18A	18A	0.....15/30A
20A	24A	24A	0.....20/40A
25A	30A	30A	0.....25/50A
30A	36A	36A	0.....30/60A
40A	48A	48A	0.....40/80A
50A	60A	60A	0.....50/100A
60A	72A	72A	0.....60/120A
75A	90A	90A	0.....75/150A
80A	96A	96A	0.....80/160A
100A	120A	120A	0.....100/200A
125A	150A	150A	0.....125/250A
150A	180A	180A	0.....150/300A
200A	240A	240A	0.....200/400A
250A	300A	300A	0.....250/500A
300A	360A	360A	0.....300/600A
400A	480A	480A	0.....400/800A
500A	600A	600A	0.....500/1000A
600A	720A	720A	0.....600/1200A
750A	900A	900A	0.....750/1500A



ISO 9001

VISHAWKARMA SCIENTIFIC WORKS

An ISO 9001 : 2015 Certified Company

761, Dina Mandi, Ambala Cantt, Haryana-133001 website: www.viskawmeters.co.in

Contact us: +91 9953241920, 8882030155

Email: viskawmeters@gmail.com

PRIMARY CURRENT	SECONDARY CURRENT : 5AMPS OR 1 AMPS -SCALE-		
MODEL	MDIS 96A	MDID 96A	
100%	120%	120%	200%
800A	960A	960A	0.....800/1600A
1000A	1.2kA	1.2kA	0.....1/2kA
1200A	1.4kA	1.4kA	0.....1.2/2.4kA
1500A	1.8kA	1.8kA	0.....1.5/3kA
2000A	2.4kA	2.4kA	0.....2/4kA
2500A	3.0kA	3.0kA	0.....2.5/5kA
3000A	3.6kA	3.6kA	0.....3/6kA
4000A	4.8kA	4.8kA	0.....4/8kA
5000A	6.0kA	6.0kA	0.....5/10kA