



VISHAWKARMA SCIENTIFIC WORKS

An ISO 9001 : 2015 Certified Company

761, Dina Mandi, Ambala Cantt, Haryana-133001 website: www.viskawmeters.co.in
 Contact us: +91 9953241920, 8882030155 Email: viskawmeters@gmail.com

MAXIMUM DEMAND METER

DESCRIPTION:

For measuring mean maximum current value, when it is 8min or 15 min or 30min.

Model: MDI-M72

Accuracy: Class3.0

Specification: 8min 5A, 15min 5A, 30min 5A, 8min 1A, 15min 1A

With bimetal movement and thermal delayed indicator for measuring the maximum meanload during a period of 8 or 15 minutes, eats red maximum pointer. Lead seal can protect resetting knob of maximum pointer. Response time 8 or 15,30 minutes(to be specified when ordering).

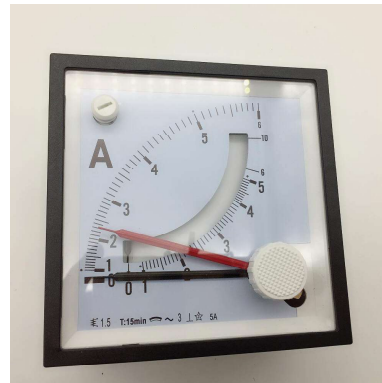
Heat resistance: Case of non-combustible plastic material.

Changeable scale: All scales with printing technique. The dial plate with different scale which is at the same internal value can be changeable. But the accuracy is unchangeable. Fastening: By means of nuts, absolutely safe, fast, robust, side by side. Mounting depth: Max43mm.

Maximum Demand meter is used for monitoring thermal loading in Power Distribution systems, Networks, Machines etc. It indicates maximum loading current over a period. Short-period current peaks are not registered but long overloads are registered. In the Maximum Demand meter the measuring current flows through the bimetal spiral which is temperature sensitive. The free end of the spiral is connected to a black measuring pointer. The moving system is activated by heat generated by the current flowing through the spiral. The instrument is provided with an additional red slave pointer with a higher friction, which makes it to remain at its maximum position, which determines the maximum average loading current. The high torque of metallic movement drags the red pointer along with the black pointer. The red pointer remains stationary at the maximum value reached. This can be reset by rotating the knob provided on front face. To prevent false indication due to fluctuations in ambient temperature, an additional bimetallic spiral is wound in opposite direction, which is mounted on the same spindle to compensate variation in temperature from 10 to +55 degrees Centigrade. Frequently there is a need to measure instantaneous current simultaneously & hence moving iron movement having the same range is incorporated in the same meter.

FEATURES:

- RMS measurement of maximum current.
- Long current peaks are registered.
- Red pointer to indicate maximum current reached.
- Analogue Indication.
- 20% overload capacity.
- Instantaneous current measurement. (3 Pointer)
- Sturdy movement.



ELECTRICAL SPECIFICATONS:

Type : BIMETALLIC; ANALOGUE AMMETER.

Operating Current : 1 Amp or 5Amp

Frequency : 40 ~ 65Hz.

Accuracy : $\pm 3\%$ for resetable red pointer (Bimetallic), $\pm 1.5\%$ instantaneous value pointer (Moving Iron)

Thermal Lag (Setting Time) 15 minutes (standard) & 8 minutes (on special request).

VA Burden : Approx. 3.5VA for Bimetallic Ammeters &, Approx. 4VA for Bimetallic And Moving Iron Ammeter.

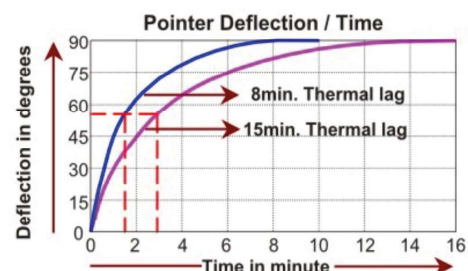
Insulation resistance : Greater than 20 Mohms at 500V DC

Dielectric test : 2kV rms for 1 minute.

Operating temp : -10°C to 55°C (for Analogue Instrument)

Storage Temp : -20°C to 70°C

Humidity ; upto 95% RH





ISO 9001

VISHAWKARMA SCIENTIFIC WORKS

An ISO 9001 : 2015 Certified Company

761, Dina Mandi, Ambala Cantt, Haryana-133001 website: www.viskawmeters.co.in

Contact us: +91 9953241920, 8882030155

Email: viskawmeters@gmail.com

MECHANICAL SPECIFICATIONS:

| MODEL | MDIS 72A | MDID 72A | |
|--|--|-------------------------|-----------------|
| SIZE(mm) | 72 x 72 x 70 | 72 x 72 x 70 | |
| PANEL CUTOOUT(mm) | 68 X 68 ^{+0.8} | 68 x 68 ^{+0.8} | |
| SCALE LENGTH (Approx) OF BIMETALLIC SYSTEM | 60mm | 60mm | |
| SCALE LENGTH (Approx) OF MI SYSTEM | N.A. | 38mm | |
| WEIGHT (Approx) | 0.180 kg | 0.200 kg | |
| PRIMARY CURRENT | SECONDARY CURRENT : 5AMPS OR 1 AMPS -SCALE- | | |
| MODEL | MDIS 72A | MDID 72A | |
| 100% | 120% | 120% | 200% |
| 10A | 12A | 12A | 0.....10/20A |
| 15A | 18A | 18A | 0.....15/30A |
| 20A | 24A | 24A | 0.....20/40A |
| 25A | 30A | 30A | 0.....25/50A |
| 30A | 36A | 36A | 0.....30/60A |
| 40A | 48A | 48A | 0.....40/80A |
| 50A | 60A | 60A | 0.....50/100A |
| 60A | 72A | 72A | 0.....60/120A |
| 75A | 90A | 90A | 0.....75/150A |
| 80A | 96A | 96A | 0.....80/160A |
| 100A | 120A | 120A | 0.....100/200A |
| 125A | 150A | 150A | 0.....125/250A |
| 150A | 180A | 180A | 0.....150/300A |
| 200A | 240A | 240A | 0.....200/400A |
| 250A | 300A | 300A | 0.....250/500A |
| 300A | 360A | 360A | 0.....300/600A |
| 400A | 480A | 480A | 0.....400/800A |
| 500A | 600A | 600A | 0.....500/1000A |
| 600A | 720A | 720A | 0.....600/1200A |
| 750A | 900A | 900A | 0.....750/1500A |



ISO 9001

VISHAWKARMA SCIENTIFIC WORKS

An ISO 9001 : 2015 Certified Company

761, Dina Mandi, Ambala Cantt, Haryana-133001 website: www.viskawmeters.co.in

Contact us: +91 9953241920, 8882030155

Email: viskawmeters@gmail.com

| PRIMARY CURRENT | SECONDARY CURRENT : 5AMPS OR 1 AMPS -SCALE- | | |
|-----------------|--|----------|-----------------|
| MODEL | MDIS 72A | MDID 72A | |
| 100% | 120% | 120% | 200% |
| 800A | 960A | 960A | 0.....800/1600A |
| 1000A | 1.2kA | 1.2kA | 0.....1/2kA |
| 1200A | 1.4kA | 1.4kA | 0.....1.2/2.4kA |
| 1500A | 1.8kA | 1.8kA | 0.....1.5/3kA |
| 2000A | 2.4kA | 2.4kA | 0.....2/4kA |
| 2500A | 3.0kA | 3.0kA | 0.....2.5/5kA |
| 3000A | 3.6kA | 3.6kA | 0.....3/6kA |
| 4000A | 4.8kA | 4.8kA | 0.....4/8kA |
| 5000A | 6.0kA | 6.0kA | 0.....5/10kA |