



Promech Industries Pvt Ltd.,
7/237-A, Pattanam to Peedampalli Main Road,
Nagamanaickenpalayam,
Coimbatore-641016, Tamil Nadu, India.
Email : promech5@yahoo.co.in
info@marksorter.com
web : www.marksorter.com
www.promechindustries.com
Mobile : +91 99943 99996
Office.No: +91 99438 96666
Fax : +91 78386 54670

Authorized Service Provider
Mendo Controls
7/237-B, Pattanam to Peedampalli Main Road,
Nagamanaickenpalayam,
Coimbatore-641016, Tamil Nadu, India.
Email : mendocontrols@gmail.com
Mobile : +91 99943 99005 - 80125 99005
Office.No : +91 99437 96666



CE: 2419



Reg.No 9910017760



MULTI GRAIN SORTER
TRENDZ T20
Endless Purity of Your Product



For Service Contact (24x7) : +91 73050 - 71111

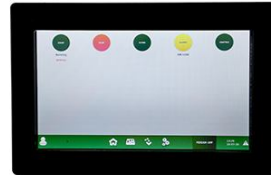
Product Feature

Mark color sorter is designed to provide a superior performance and reliability, allowing you to avoid annoying maintenance which would effect your production. Mark color sorter is a complete system that incorporates advanced engineering concepts.

Here we proudly introduce the most advanced color sorting machine from mark sorter mainly focused on rice, pulses, seeds, spices & nuts sectors as Trendz-T20 which have the following features.

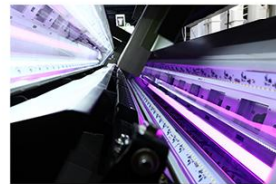
Tri Chromatic Camera Scanner

- > High speed data acquisition and digital image processing technology using FPGA
- > Resolution - RGB 3x5400 pixels
- > Highly specialized lens for sorting purpose
- > Front and Back evenly alligned cameras with digital alignment technology



10' Inch Color HMI

- > Mini computer based touch screen
- > Uncountable storage capacity for saving different program modes
- > User interfaced touchscreen with live communication technology
- > Inbuilt processor with 1GHz speed



User Defined Background With Color Led

- > Low energy consumption led lighting
- > Improves fine RGB illumination in background
- > Enhancing defects recognition systems by varying different backgrounds for different types of grains

High Speed Pneumatic Ejectors

- > Precision sorting of grains with high speed of 1ms on/off time
- > Ultra drive high frequency solenoid valve
- > Long operating life (half a billion cycles)



Simultaneous Re-Sorting

- > Maximizes recovery of good product having highest reject concentration



Chute

- > Used for flow of all types of grains in one chute can have optional HeatPad and acrylic sheet attachments
- > 63 Channels Per Chute

Chute Option Available	10 Chute	8 Chute	7 Chute	6 Chute	5 Chute	4 Chute	3 Chute	2 Chute	1 Chute
Chute Distribution (P+S+F)	6+2+2	5+2+1	4+2+1	4+1+1	3+1+1	2+1+1	2+1	1+1	-
Output (TPH) for rice	5 to 7	4 to 6	3.5 to 5	3 to 4.5	2.5 to 3.5	1.5 to 3	1.5 to 2.5	0.8 to 1.5	0.5 to 1.5
No. of Camera (F&R)	10+10	8+8	7+7	6+6	5+5	4+4	3+3	2+2	1+1
Air@7.5kg/Cm2	180 CFM	150 CFM	126 CFM	108 CFM	90 CFM	72 CFM	54 CFM	40 CFM	30 CFM
Compressor Requirement	40 HP Screw	35 HP Screw	30 HP Screw	25 HP Screw	20HP Screw	20HP Screw	15HP Screw	10HP Screw	10HP Screw
Dimension (LxWxH) Feet	14.43x4.88x5.97	11.57x4.88x5.97	10.43x4.88x5.97	9.3x4.88x5.97	8.16x4.88x5.97	7x4.88x5.97	5.89x4.88x5.97	4.76x4.88x5.97	3.62x4.88x5.97
Cabin Dimension Feet (LxWxH)	18x10x8	16x10x8	14x10x8	13x10x8	12x10x8	10x10x8	9x10x8	8x10x8	7x10x8

Note 1: Output load and rejection will vary depend upon input materials contamination and dust
2: 2% Contamination

