

Grey cushions collection

Shwet Anand Exports





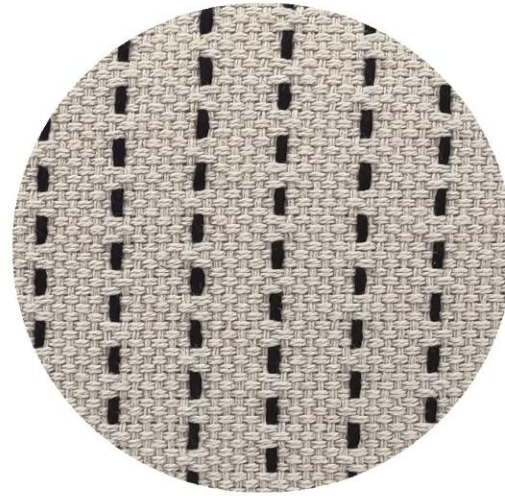
CLOSE UP

DETAILS:

Base fabric: 100% Cotton

Technique: Woven Mélange cotton slub fabric

Edging: knife edge



CLOSE UP

DETAILS:

Base fabric: 100% Cotton

Technique: Woven fabric

Edging: knife edge



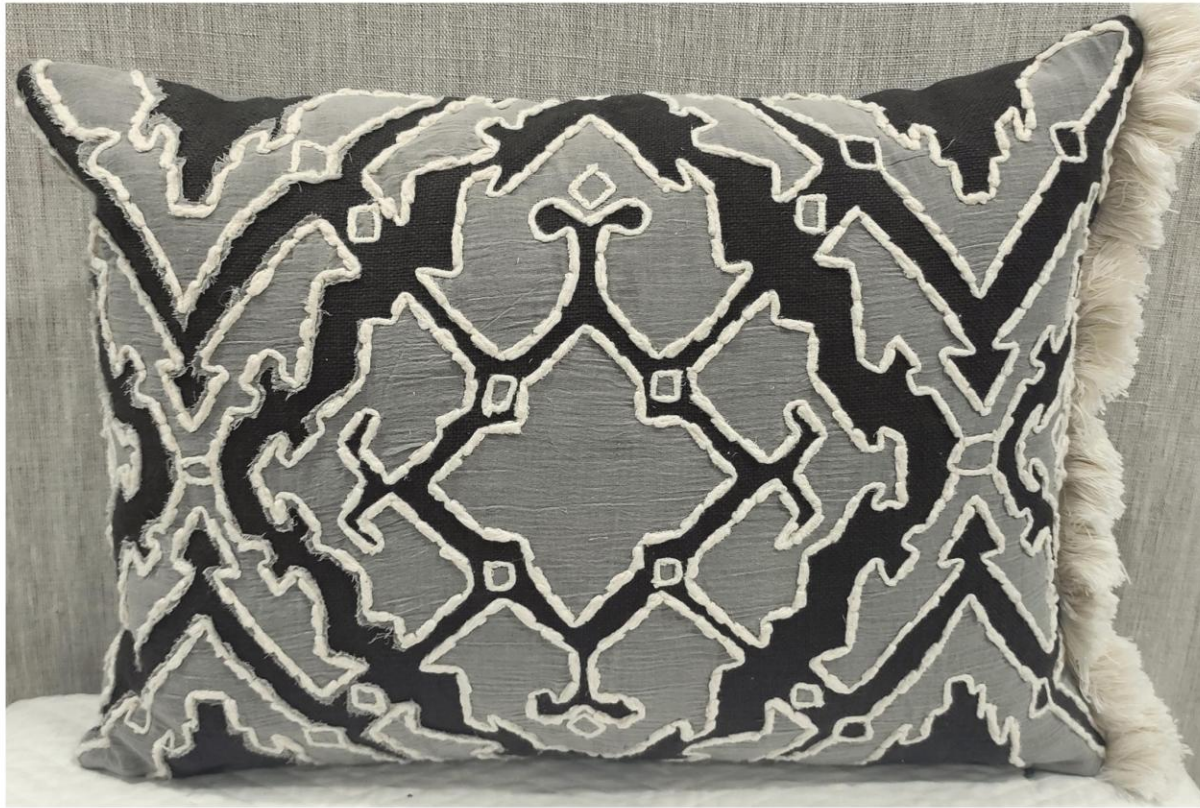
CLOSE UP

DETAILS:

Base fabric:100% Linen

Technique: Printed in monotoes with highlighted hand embroidery using French knots in tones of grey

Edging: grey casement chord piping



CLOSE UP

DETAILS:

Base fabric: Grey cotton slub (M)

Technique: this monotone cushion is made using crape fabric as appliqué with half the pattern cut uniformly and half with frayed edges giving it a design element along with off-white chord embroidery done on manual machine

Edging: Offwhite Fringes on one side only



CLOSE UP

DETAILS:

Base fabric: Oatmeal

Technique : Ombrey dyed cotton velvet and then appliquéed in the geometric pattern
With monotone embroidery

Edging: knife edge



CLOSE UP

DETAILS:

Base fabric: Cotton slub (H)

Technique: This mono tone cushion is made using cotton voile fabric as lace to fill up the pattern.

Edging: 5 tassels in 4 corners



CLOSE UP

DETAILS:

Base fabric: Textured Cotton waffle

Technique: the pattern is made using thin satin chord which is off-white in color

Edging: Cotton casement chord piping



CLOSE UP

DETAILS:

Base fabric: Oatmeal

Technique: Mixture of various crewel embroidery techniques in tones of grey

Edging: knife edge



CLOSE UP

DETAILS:

Base fabric: Cotton slub (H)

Technique: This monotone cushion is made on dyable cotton slub base with dyable chenille yarn and then dyed and stone washed

Edging: knife edge

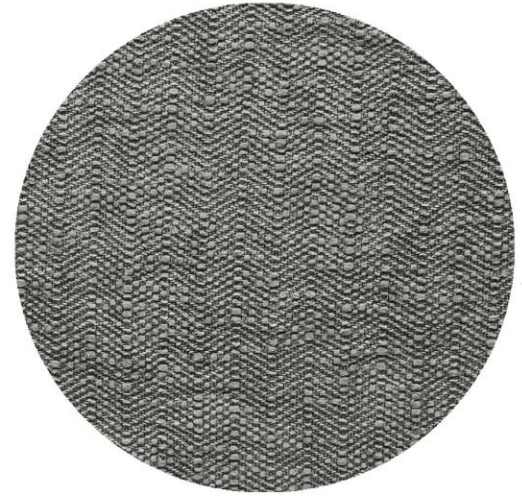


DETAILS:

Base fabric: Cotton slub (H)

Technique: This monotone cushion is made using manual embroidery with fabrics like cotton voile and oatmeal used for floral appliqué alone with cotton yarns dyed in tones of grey and offwhite along with the highlight of silver grey chenille yarn

Edging: knife edge



CLOSE UP

DETAILS:

Base fabric: Woven 100% cotton

Technique: This monotone cushion is made on dyable cotton base and then dyed
And stone washed

Edging: knife edge



DETAILS:

Base fabric: Oatmeal fabric

Technique: This monotone cushion is made using low cut tufting techniques in dark grey color along with chord embroidery using thick and thin yarn to fill the inner diamond pattern with heavily buckley yarn connection the diamonds

Edging: knife edge



CLOSE UP

DETAILS:

Base fabric: 100% Cotton

Technique: This monotone cushion is made using various tufting techniques in tones of grey along with crewel embroidery

Edging: knife edge