

Throws

Shwet Anand Exports



CLOSE UP

Style No: SA-3001
Fabric: 100% Cotton waffle
Technique: Tufting



CLOSE UP

Style No: SA-3002

Fabric: 100% Cotton waffle

Technique:

Front: dyed and stone washed

Back: Flannel fabric white

Computer embroidery



Style No: SA-3003
Fabric: 100% Cotton woven
Technique: Woven with fringes



CLOSE UP

Style No: SA-3004

Fabric: 100% Cotton Velvet

Technique: High and low tufting done
in geometric pattern

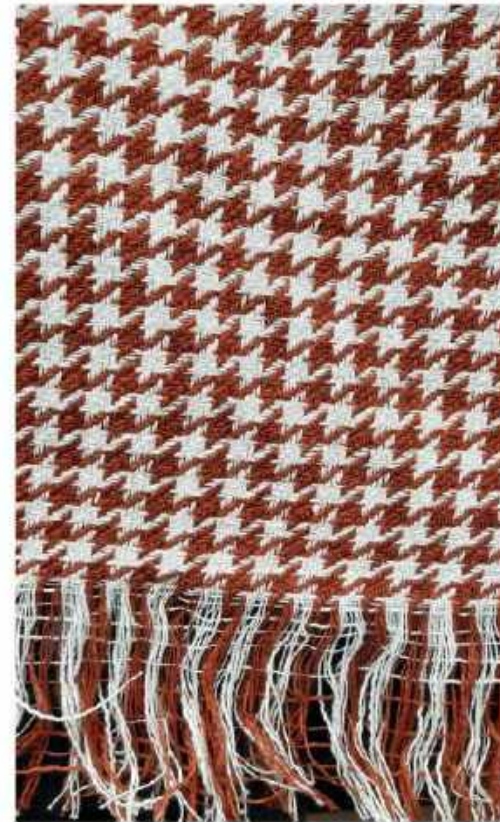
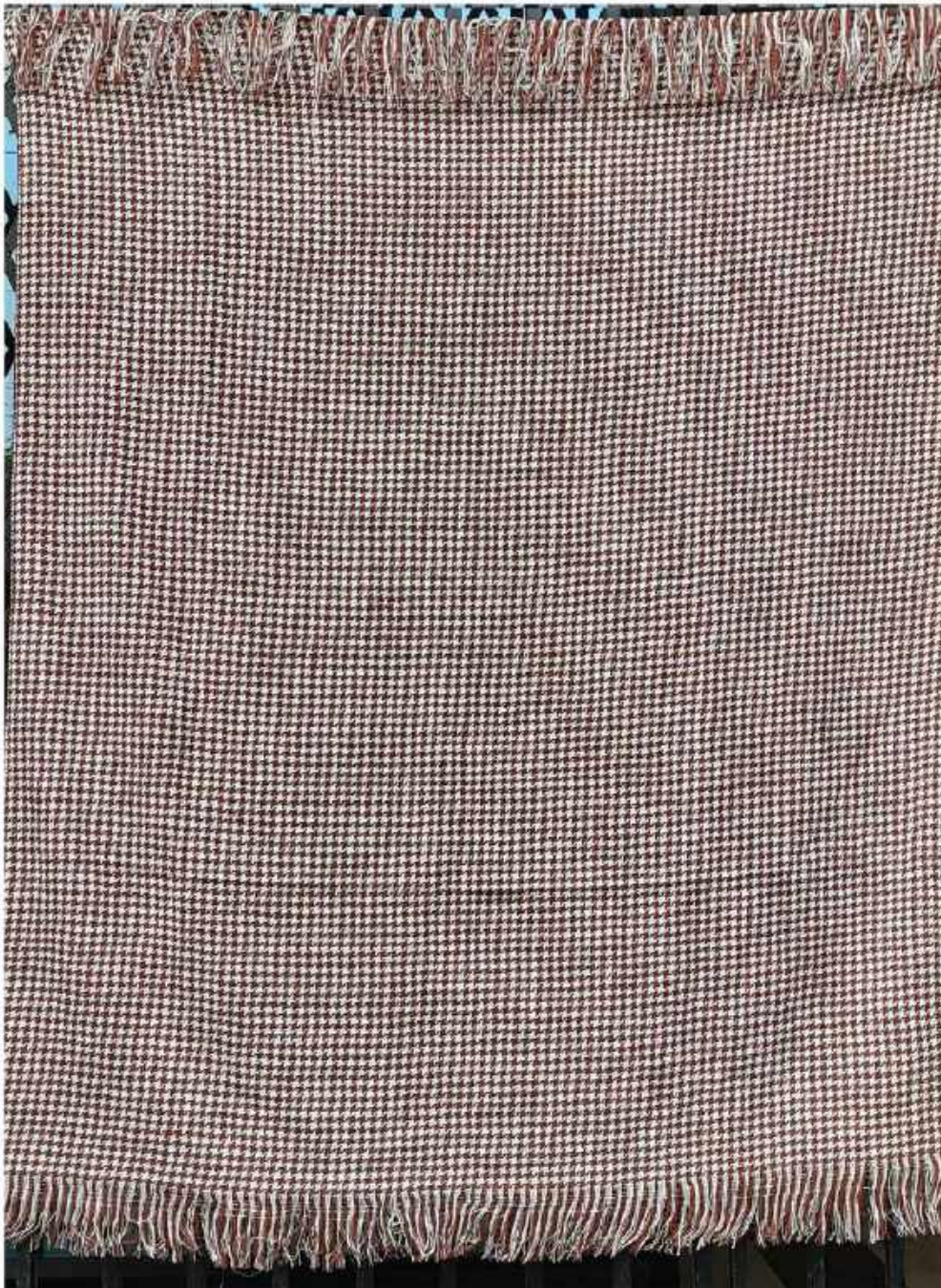


CLOSE UP

Style No: SA-3005

Fabric: 100% Cotton

Technique: Woven with fringes



CLOSE UP

Style No: SA-3006

Fabric: 100% Cotton

Technique: Woven in hounds tooth pattern with fringes

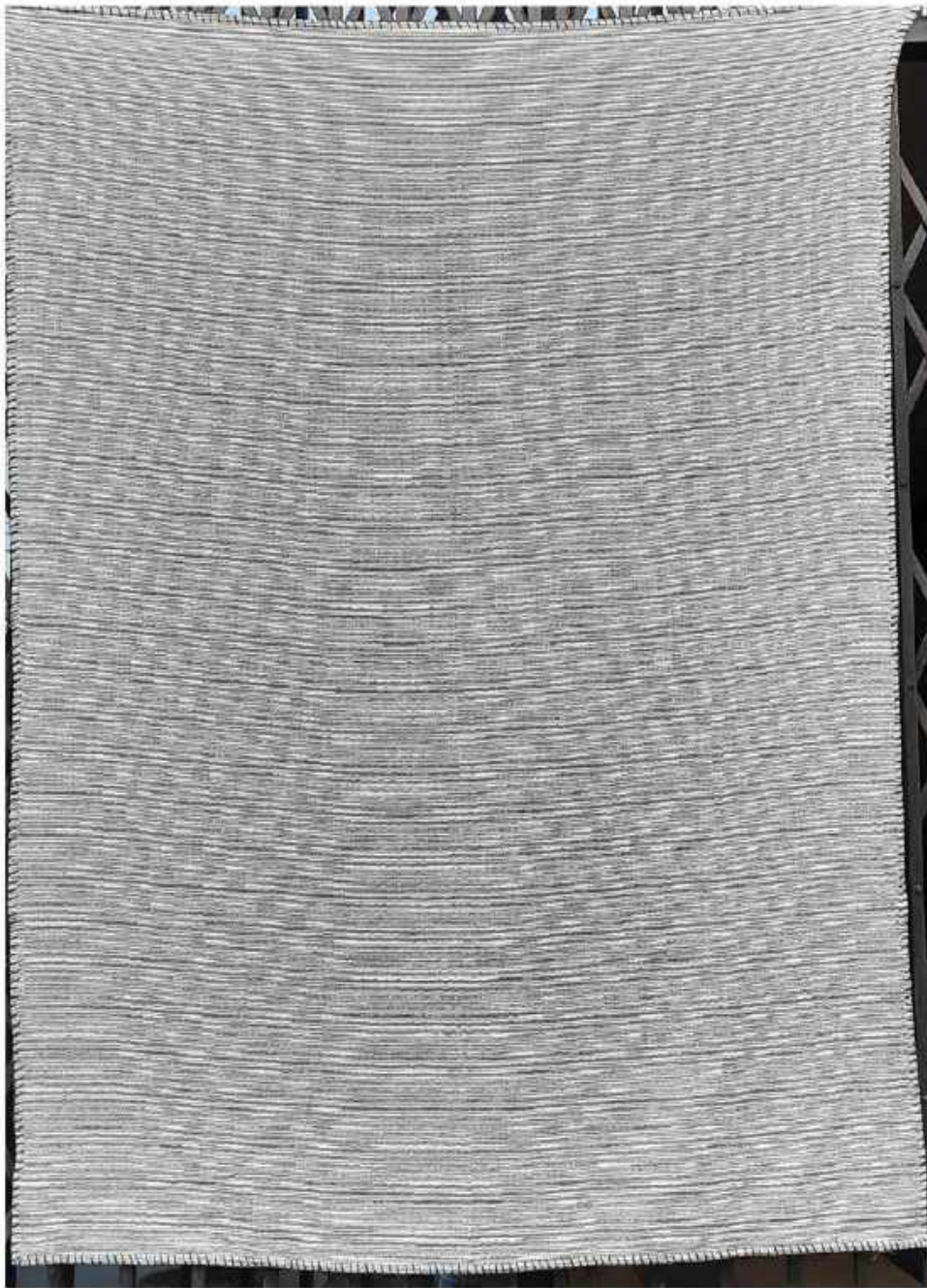


CLOSE UP

Style No: SA-3007

Fabric: 100% Cotton

Technique: Double cloth fabric is ties and then dyes giving it shebori effect with 4 chunky mélange tassels on the corners



CLOSE UP

Style No: SA-3008

Fabric: 100% Cotton

Technique: Double cloth fabric woven with stripes on one side and plain on the other along with hand done blanket stitch on all the sides



CLOSE UP

Style No: SA-3009

Fabric: 100% Cotton

Technique: Double cloth fabric is tied and then dyed giving it a bandhani effect with 4 chunky tassels on longer sides.

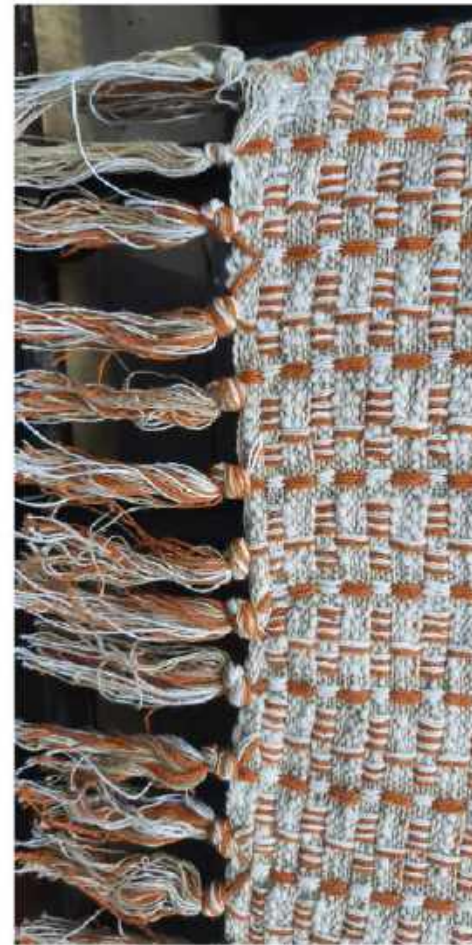


CLOSE UP

Style No: SA-3010

Fabric: 100% Cotton

Technique: Double cloth cheese cloth
with and done blanket stitch on all
4 sides



CLOSE UP

Style No: SA-3011

Fabric: 100% Cotton

Technique: Woven with fringes on the shorter sides



CLOSE UP

Style No: SA-3012

Fabric: 100% Cotton

Technique: Woven with fringes on shorter sides



CLOSE UP

Style No: SA-3013

Fabric: 100% linen

Technique: woven with stripes and then high tufting done running in between the stripes + multicolor tassel on all 4 corners complimenting the throw



CLOSE UP

Style No: SA-3014

Fabric: 100% Cotton

Technique: Double cloth fabric with blue on one side and offwhite on the other along with blanket stitch done in red on all 4 sides



CLOSE UP

Style No: SA-3015

Fabric: 100% Cotton

Technique: Double cloth fabric crinkled fabric with beige on one side and offwhite on the other along with rust and brown color double tassels on done all 4 corners



CLOSE UP

Style No: SA-3016

Fabric: 100% Cotton

Technique: Double cloth fabric crinkled fabric with Grey on one side and offwhite on the other along with 3 sets of tassels in shades of blue running on the longer sides



CLOSE UP

Style No: SA-3017

Fabric: 100% Cotton

Technique: Double cloth fabric with Grey stripe on one side and Yellow on the other stitched back to back with each other



CLOSE UP

Style No: SA-3018

Fabric: Cotton Velvet

Technique: Geometric diamond
texture made with machine quilting



Style No: SA-3019

Fabric: 100% cotton

Technique: Ombrey dyed base in shades of blue with computer embroidery done in the shape of leaves+ white and blue set of tassels on All 4 corners



CLOSE UP

Style No: SA-3020

Fabric: Cotton Velvet

Technique: Geometric diamond
texture made with tonal hand quilting+
orange and off-white double tassels on
all 4 corners



CLOSE UP

Style No: SA-3021

Fabric: Acrylic

Technique: Woven in mélange color +
orange tassels on
2 corners and beige tassels on
opposite corners



CLOSE UP

Style No: SA-3022

Fabric: Acrylic

Technique: Woven in mélange color +
Braded fringes on 2 shorter sides

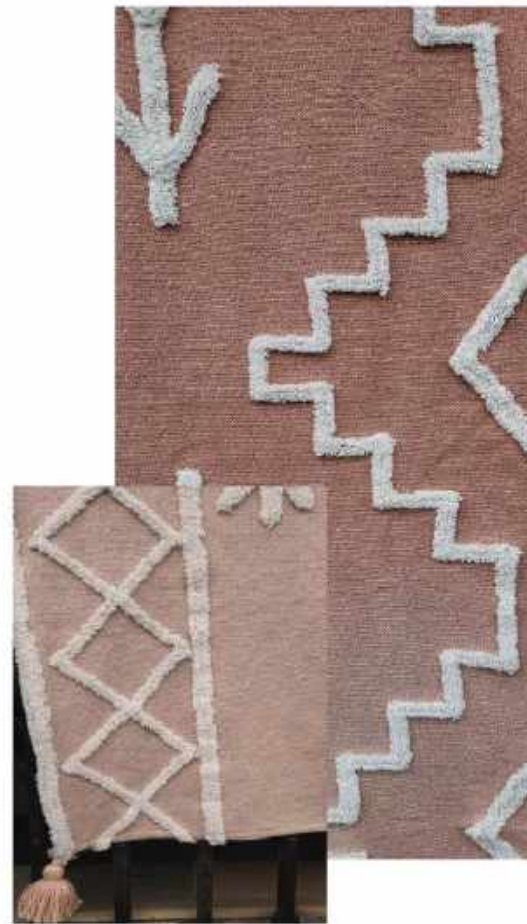


CLOSE UP

Style No: SA-3023

Fabric: 100% Cotton matty

Technique: Dyed and stone washed
base with high level tufting done
in tribal pattern



CLOSE UP

Style No: SA-3024

Fabric: 100% Cotton matty

Technique: Ombrey dyed
base with Low tufting done
in tribal pattern+ 4 corner tassels
complimenting the throw



CLOSE UP

Style No: SA-3025

Fabric: Cotton +Acrylic

Technique: Woven with fringes on
2 shorter sides



Style No: SA-3026

Fabric: Acrylic

Technique: Woven with fringes on
2 shorter sides



CLOSE UP

Style No: SA-3027

Fabric: 100% Linen

Technique: Low level tufting done in tribal pattern with fringes on 4 sides



CLOSE UP

Style No: SA-3028

Fabric: 100% Cotton

Technique: Mélange weaving with
fringes on shorter sides



CLOSE UP

Style No: SA-3029

Fabric: 100% Linen

Technique: geometric pattern formed using
high and low tufting technique



CLOSE UP

Style No: SA-3030

Fabric: Acrylic

Technique: Woven with braided fringes on shorter sides



CLOSE UP

Style No: SA-3031

Fabric: 100% Cotton

Technique: Woven double cloth with stripes in the front and running red blanket stitch on all 4 sides

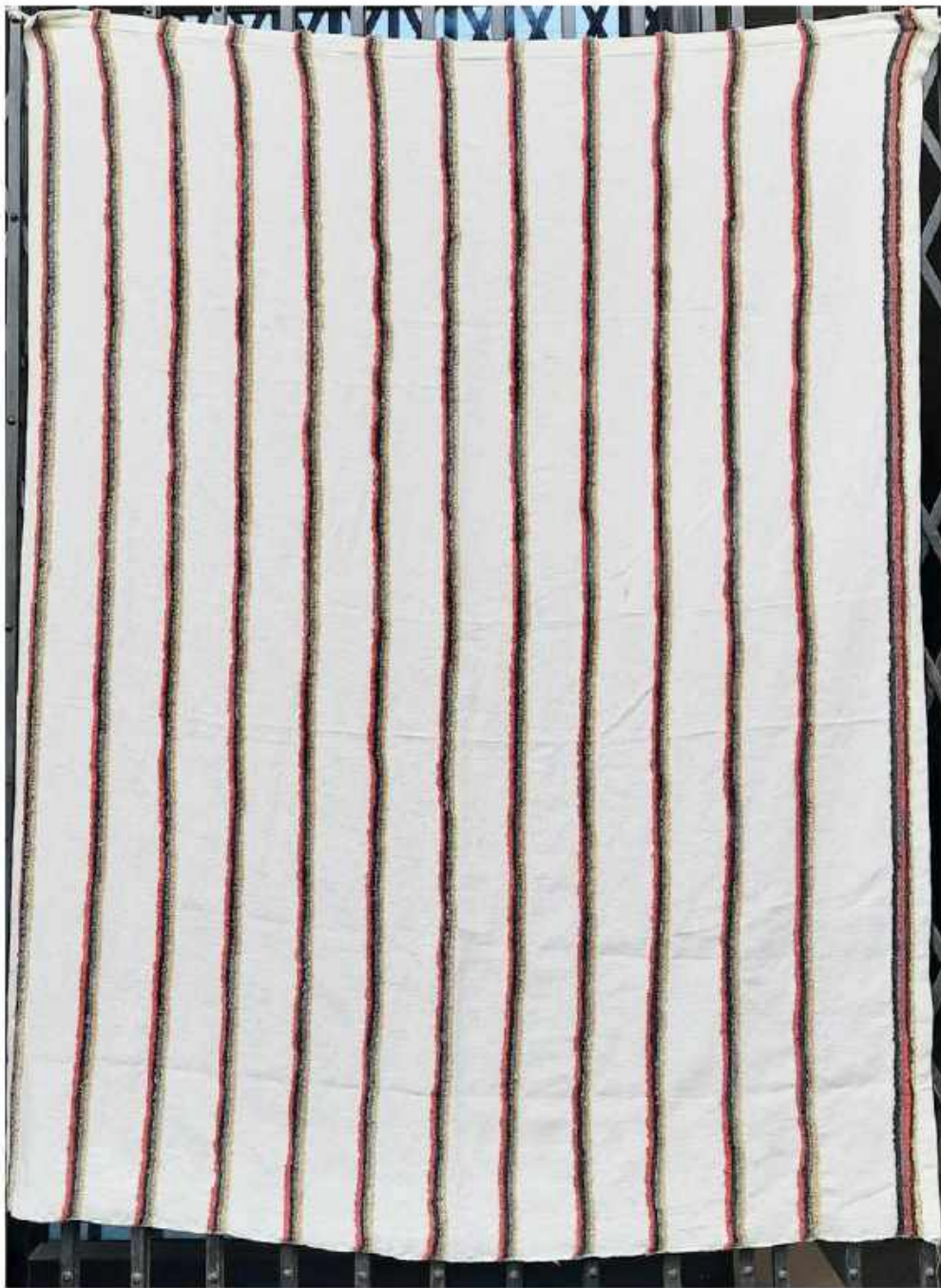


CLOSE UP

Style No: SA-3032

Fabric: Acrylic

Technique: Woven +fringes on 2
shorter sides



CLOSE UP

Style No: SA-3033

Fabric: 100% Cotton

Technique: Tufting done in multicolor,
Forming vertical stripes at equal
distance