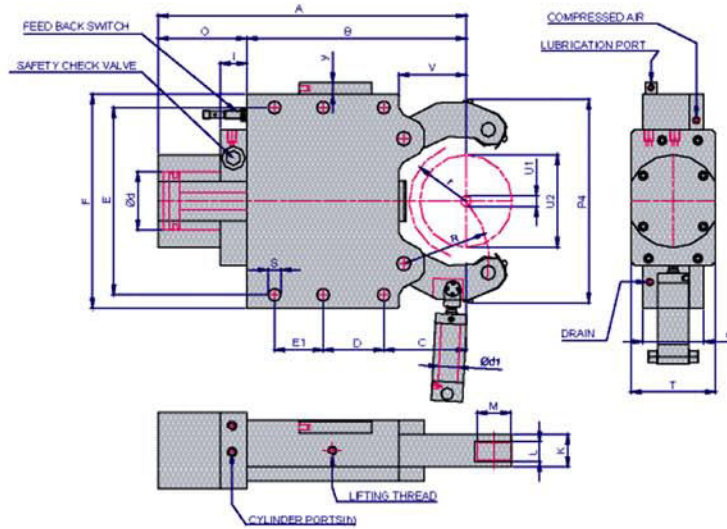


Model: HEAVY DUTY STEADY RESTS (HL)



Steady Model



Highlights:

- Very Heavy duty construction of steady rest.
- Large rollers to handle very heavy loads (10 - 40 Tonnes)
- Hydraulic support to Bottom arm for using on large flat bed lathes.
- For turbine shaft, windmill shaft, marine crank shafts

		HL80130	HS1060SAL	KRHS1540
	A	2266	1564	1504.5
	B	1760	1110	1176.5
	C	680	358	462.5
	D	310	525	365
	E	1440	970	760
	E1	310	-	-
	F	1500	1110	840
	G	306	296	150
	I	80	80	40
	K	186	186	75
	L	116	96	32
	M	270	200	110
	O	506	454	328
	P4	1729	1069	1122
	R	805	420	497
	s	39	34	27
	T	276	276	131
	V	620	283	425.5
	Y	30	30	27
	U1	600	100	150
	U2	1050	520	400
Centering range with chip guard	d	200	200	100
Cylinder bore.	d1	200	80	80
Max. Load caring capacity	daN	30000	12000	4000
Cylinder support of bottom arm	daN	20000	7000	1500
Min/Max. pressure for bottom arm cylinder	daN	25/80	20/75	15/40
Hyd. Connection(BSP)	h	1/2"	1/2"	3/8"
Operating pressure Min/Max	bar	15/80	10/60	08/115
Max. Clamp force/roller	daN	8300	6500	8300
Clamp press./Roller at 15 bar	daN	1200	1200	500
Centering accuracy over the whole clamping range	mm	0.08	0.06	0.04
Repeatability	mm	0.01	0.01	0.01
Max.peripheral roller speed.	m/min	200	200	550
Weight Approx.	kg	3000	2200	750