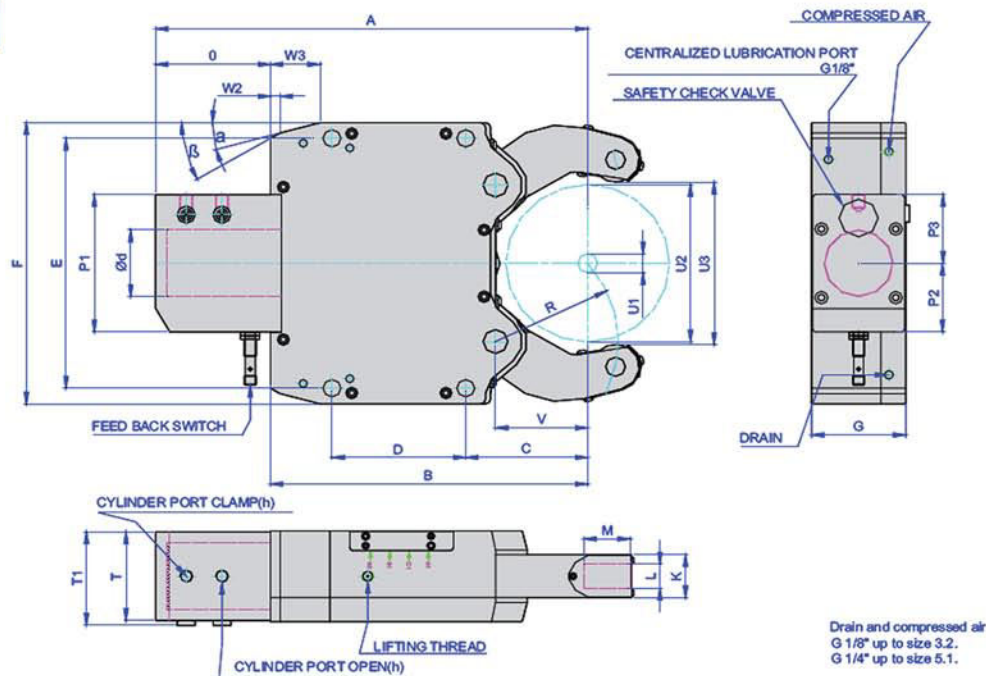


Model: FRUN



Drain and compressed air
G 1/8" up to size 3.2.
G 1/4" up to size 5.1.

Steady Model



Standard Features:

- Fully sealed body
- Safety Valve
- Provision for max. opening feedback
- 1 set swarf guard 3-piece
- Provision for compressed air connection
- Provision for centralized lubrication

	FRUN1	FRUN2	FRUN3	FRUN3.1	FRUN3.2	FRUN4	FRUN5	FRUN5.1
A	214.5	277	428	436	451	603	697	717
B	149	195	312	320	335	448	510	530
C	52	70	115	123	138	146	178	198
D	66	85	135	135	135	240	270	270
E	140	170	262	262	262	365	400	270
F	160	195	295	295	295	405	440	440
G	63	75	95	95	95	110	145	145
K	28	35	45	45	45	60	75	75
L	15	19	25	25	25	25	29	29
M	24	35	47	47	47	52	62	62
O	65.5	82	116	116	116	155	187	187
P1	95.5	122	144	144	144	164	174	174
P2	37.5	61	72	72	72	82	87	87
P3	58	61	72	72	72	82	87	87
R	55	65.5	115.5	124	140	172	209	229
S	11	14	18	18	18	23	23	23
T	57	69	93	93	93	108	140	140
T1	62	74	98	98	98	113	147	147
V	41	51	85	93	108	128	160	180
W2	5	11.2	10	10	10	18.3	19	19
W3	20	30	50	50	50	58	62	62
β	45	30	30	30	30	40	40	40
a	15	15	15	15	15	15	18	18
U1	6	8	12	20	50	30	45	85
U2	70	101	152	165	200	245	310	350
U3	75	106	162	170	202	253	318	352
d	30	50	70	70	70	90	100	100
h	1/8" BSP	G 1/4"	G 1/4"	G 1/4"	G 1/4"	G 1/4"	G 1/4"	G1/4"
Operating pressure. Min/ Max	bar	6-50	8-70	8-80	8-80	8-80	8-80	8-80
Max.clamp force/roller	daN	100	450	1000	1000	1000	1700	2000
centering accuaty over the whole clamping range	mm	0.02	0.02	0.04	0.04	0.04	0.06	0.06
Repeatability.	mm	0.005	0.005	0.007	0.007	0.007	0.01	0.01
Max.peripheral speed.	m/min	850	800	725	725	725	700	700
Weight Approx.	kg	10	20	48	48	48	104	178