



**BELADOR**  
INCREDIBLE LAMINATES

 **DIGITAL**  
PRINT LAMINATE





Impressive  
Colour & Design  
On DIGITAL Tech.

-  JAPANESE PRINT TECH.
-  8 COLOUR PRINTING
-  HD HIGH DEFINITION
-  M MODERN DESIGN
-  PHENOLIC PRODUCT



 **DIGITAL**  
PRINT LAMINATE

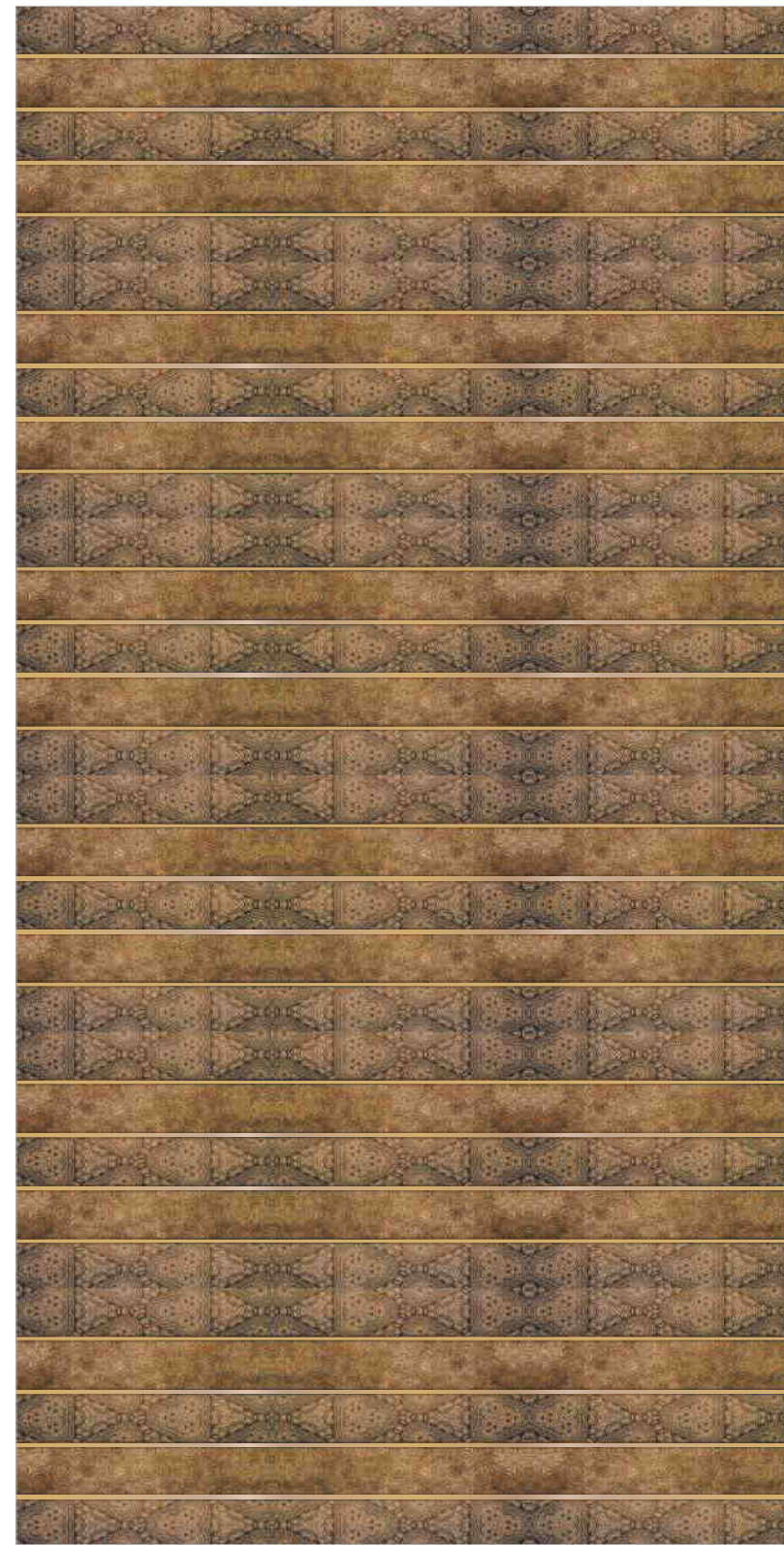
Impressive Colour &  
Design on DIGITAL Tech.

-  QSA INTERNATIONAL
-  CE
-  IS:2046  
CML-3836674





Exclusive  
Premium  
concept



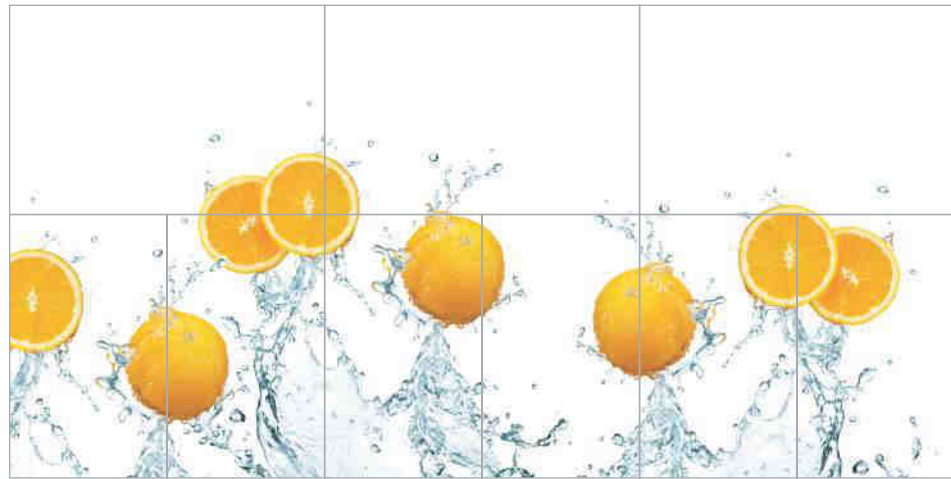
EX-03

HI-GLOSSY

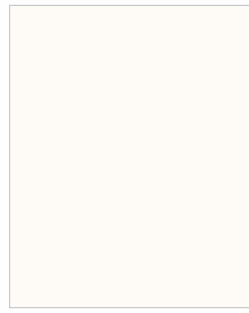




*Kitchen*  
concept



■ Suggested Colour



102-HG COLD WEISS



144-HG SPINE ORANGE

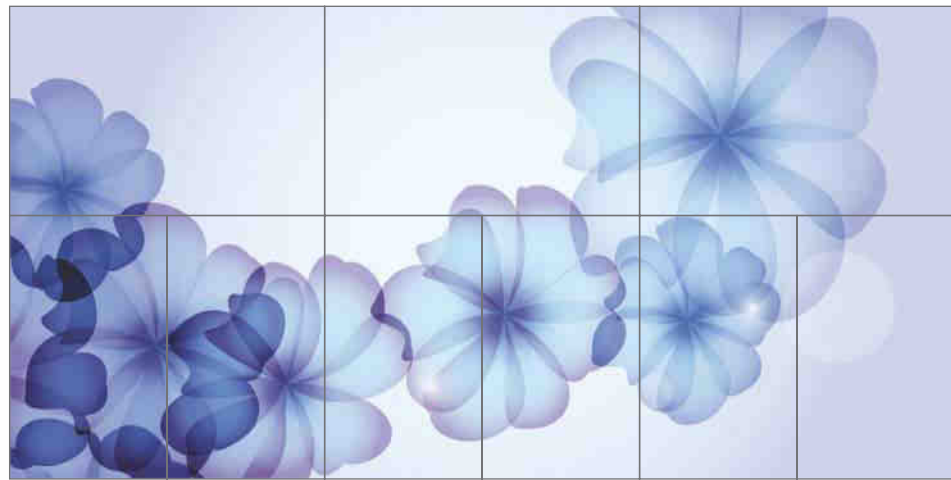


DG-07

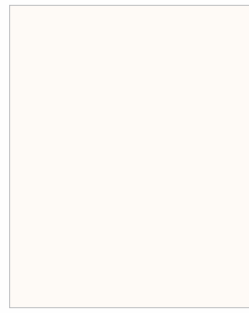
HI-GLOSSY



*Kitchen*  
concept



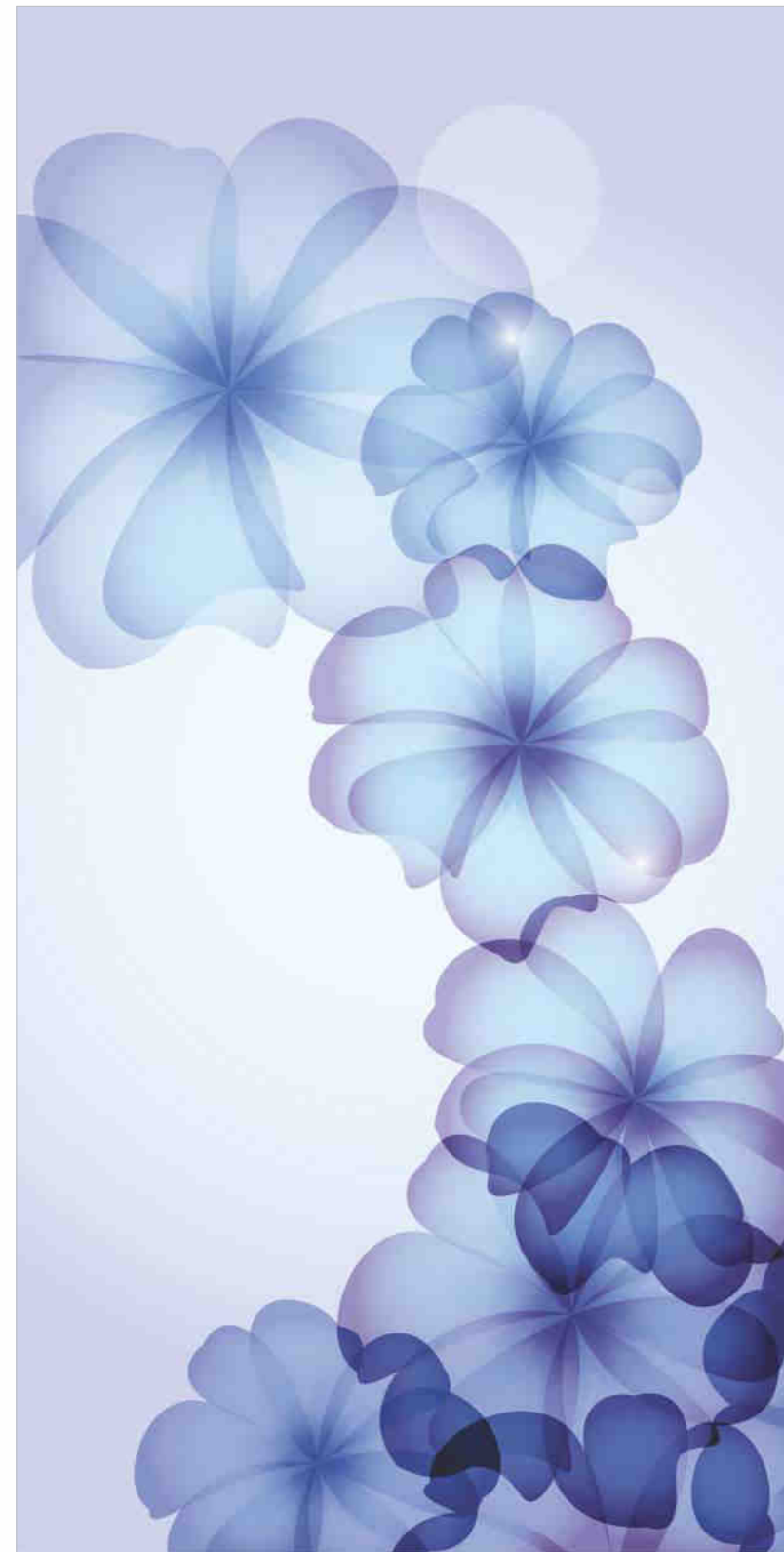
■ Suggested Colour



102-HG COLD WEISS



163-HG DEEP GREY



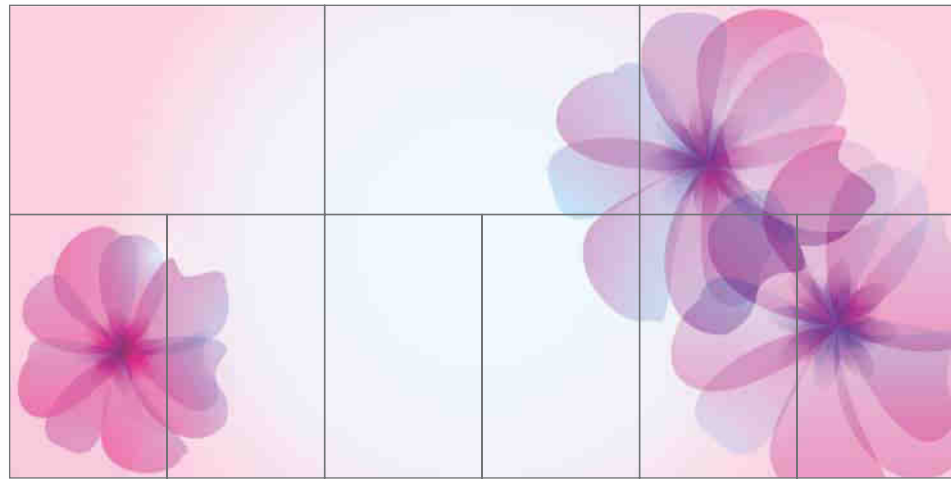
DG-08

HI-GLOSSY

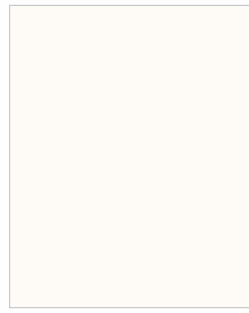




*Kitchen*  
concept



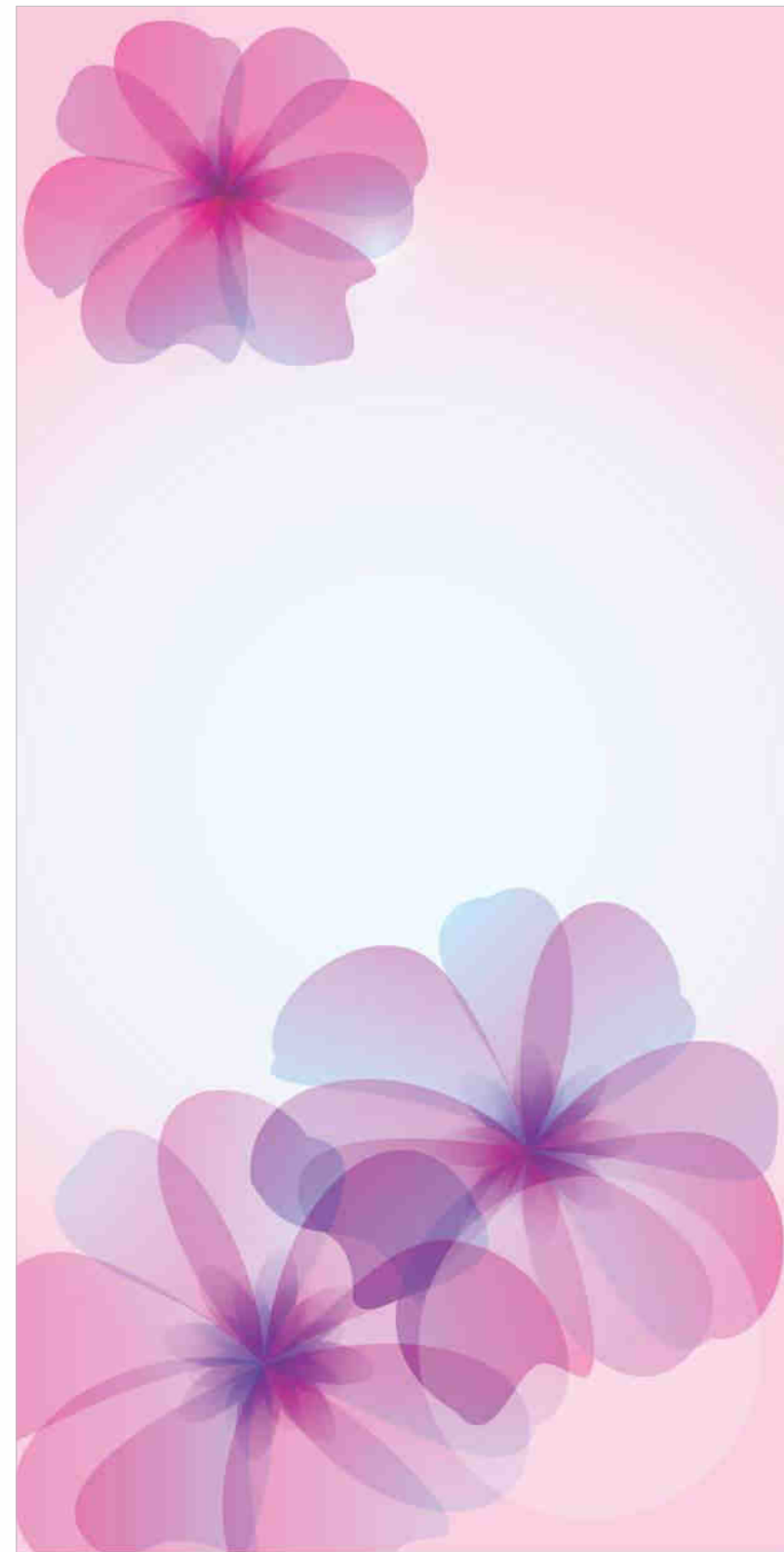
■ Suggested Colour



102-HG COLD WEISS



166-HG ROSE PINK



DG-09

HI-GLOSSY

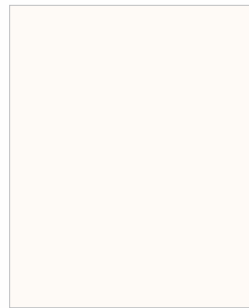




*Kitchen*  
concept



■ Suggested Colour



102-HG COLD WEISS



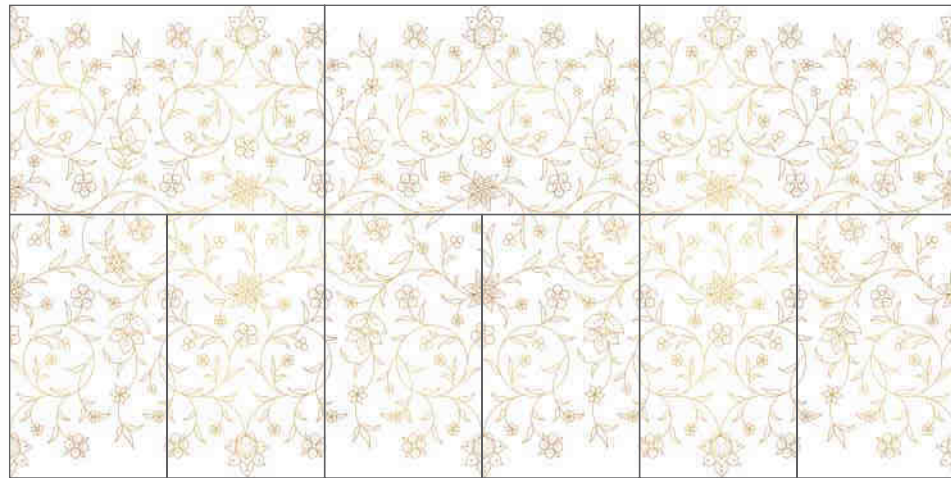
DG-10

HI-GLOSSY

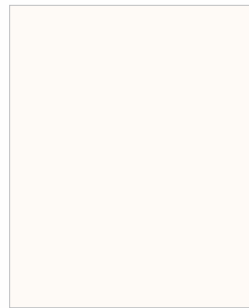




*Kitchen*  
concept



■ Suggested Colour



I02-HG COLD WEISS

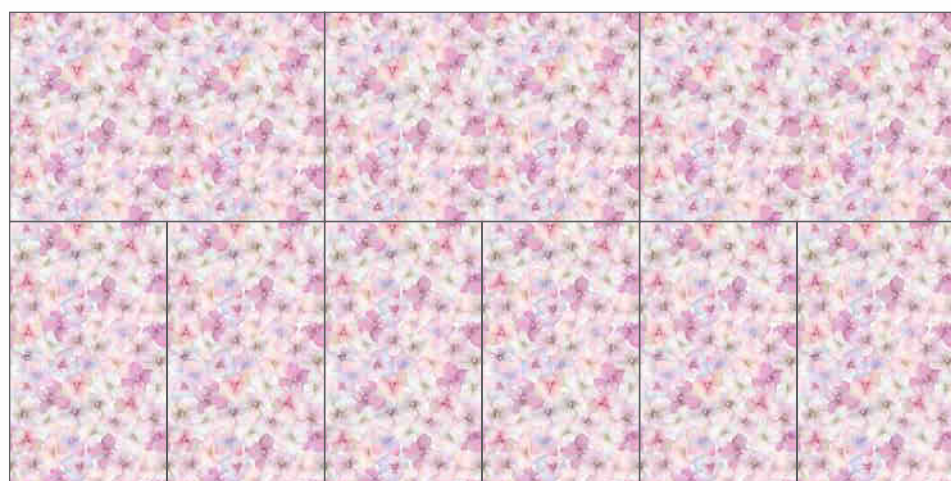


DG-II HI-GLOSSY

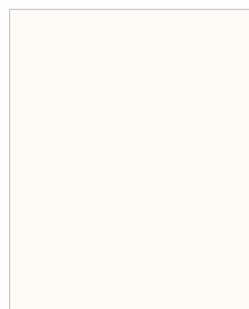




*Kitchen*  
concept



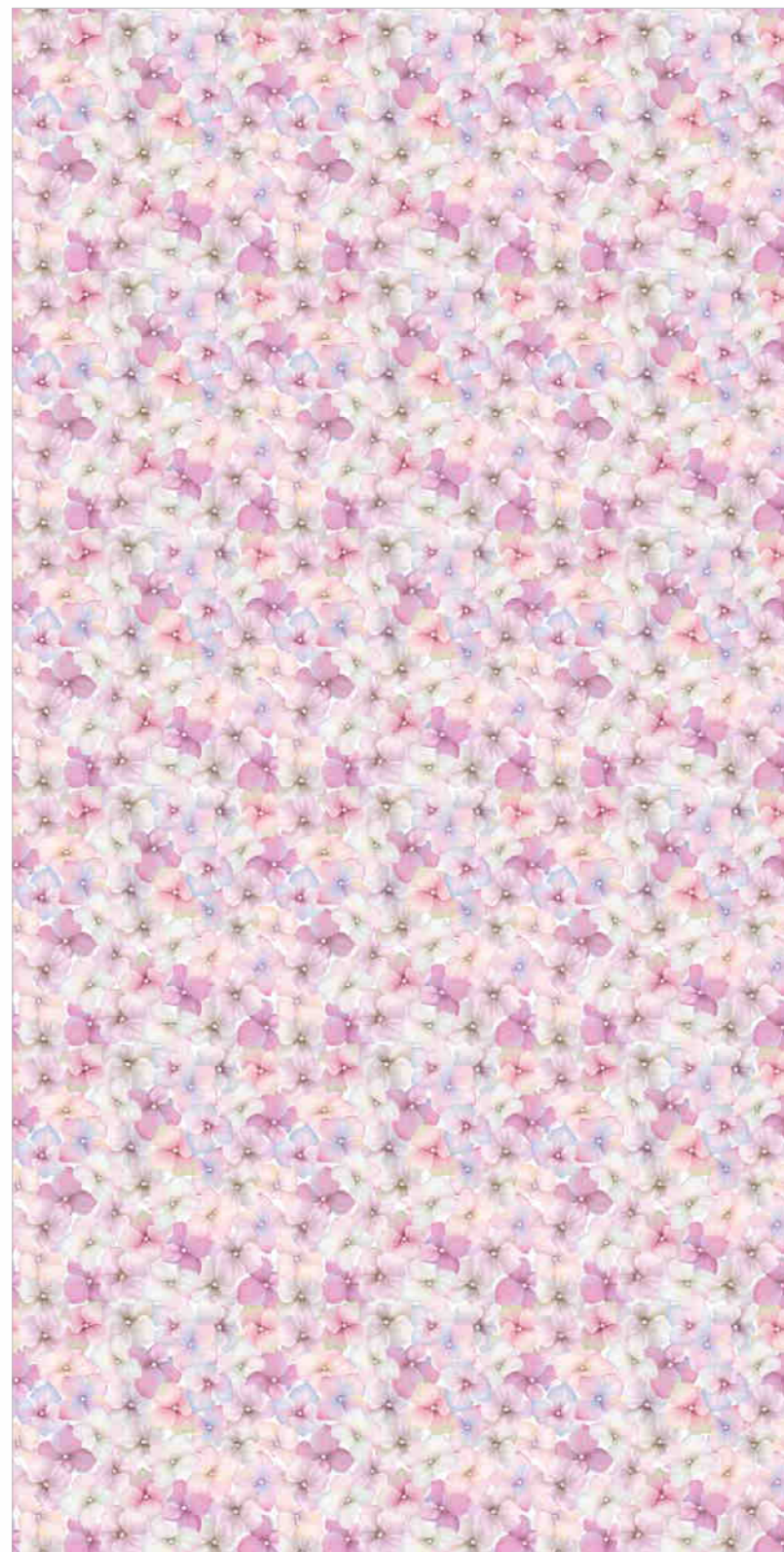
■ Suggested Colour



102-HG COLD WEISS



166-HG ROSE PINK



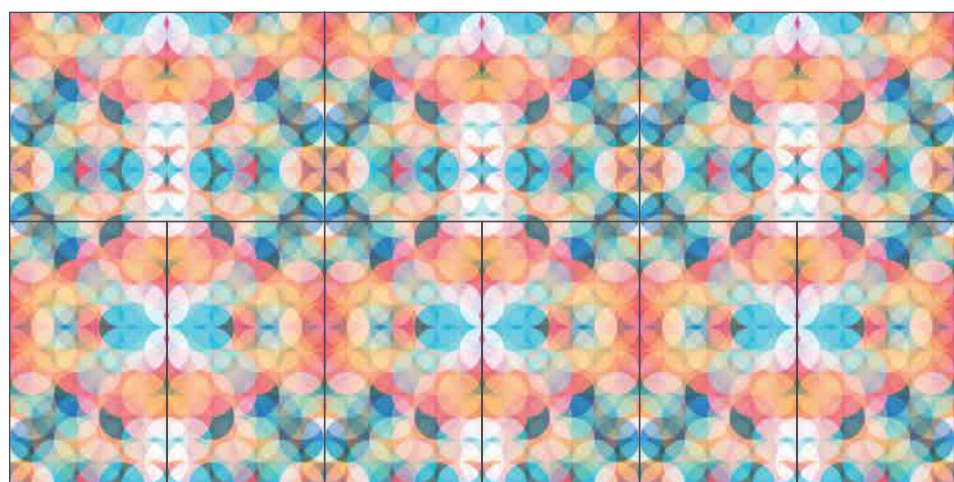
DG-12

HI-GLOSSY

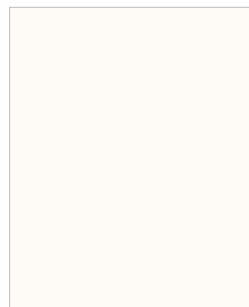




*Kitchen*  
concept



■ Suggested Colour



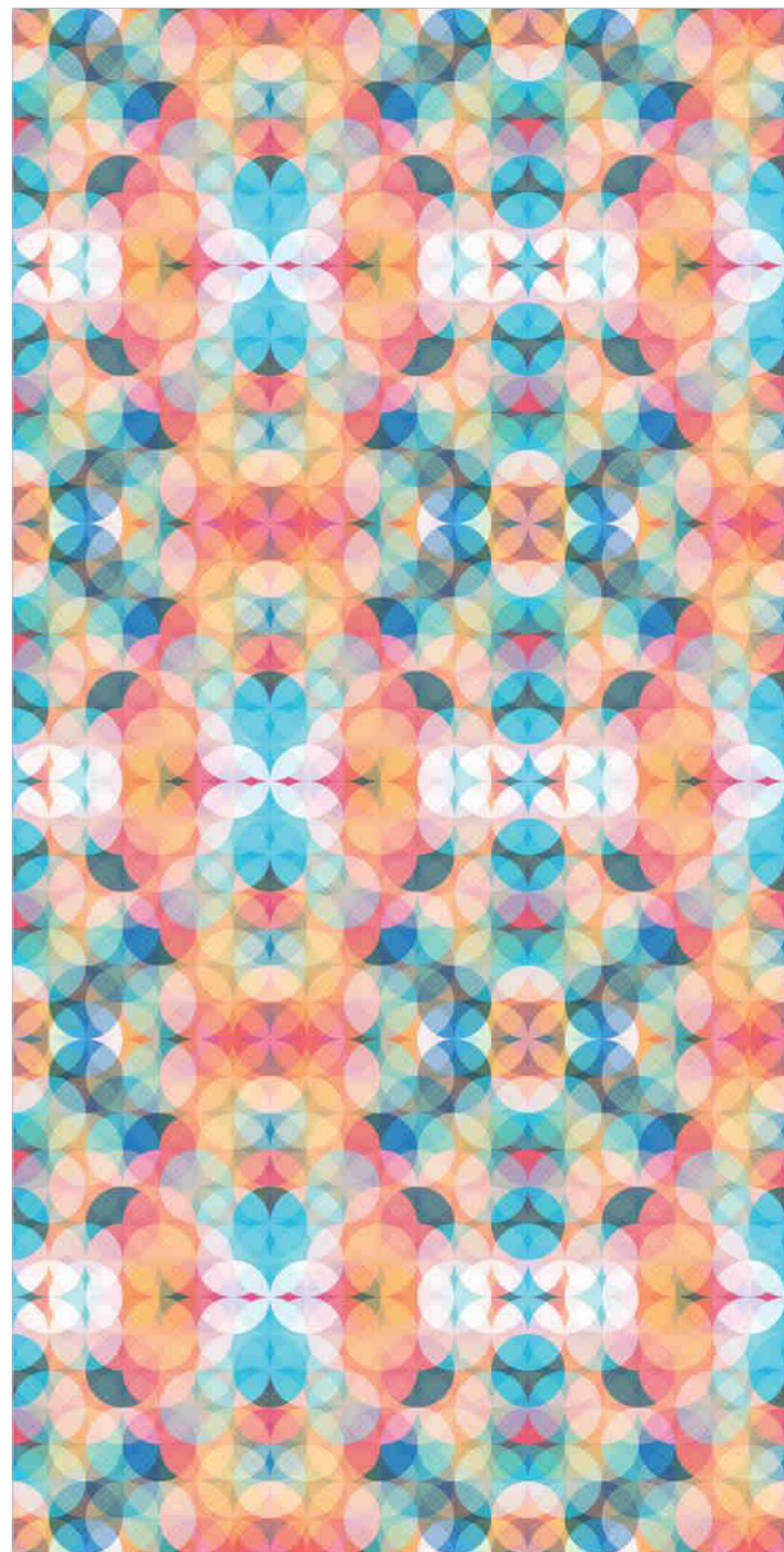
102-HG

COLD WEISS



144-HG

SPINE ORANGE



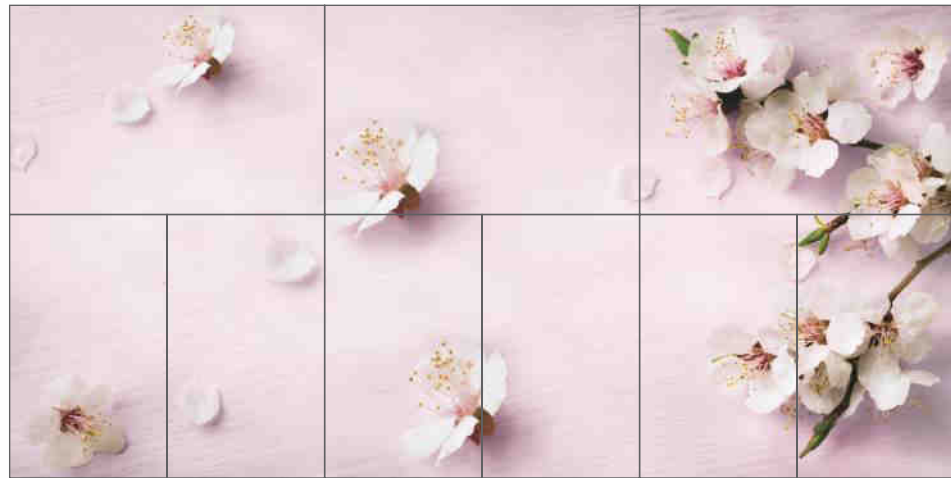
DG-13

HI-GLOSSY





*Kitchen*  
concept



■ Suggested Colour



I63-HG DEEP GREY



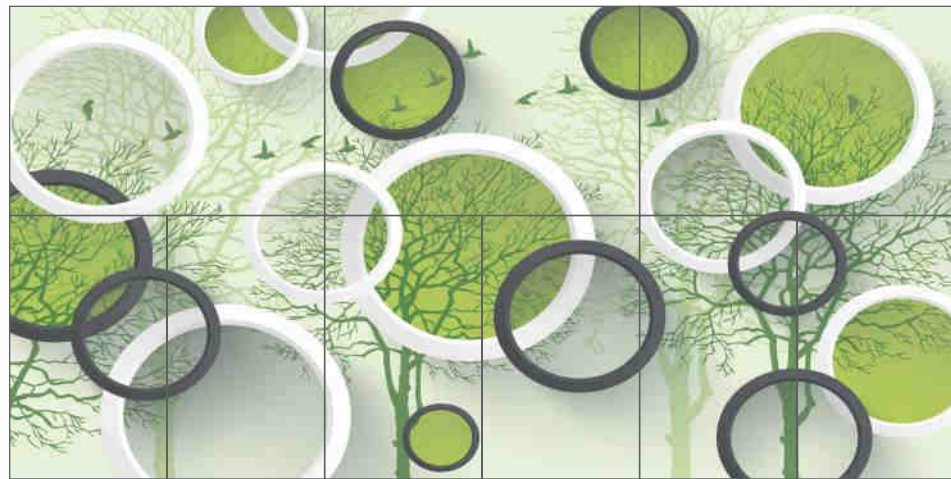
DG-14

HI-GLOSSY

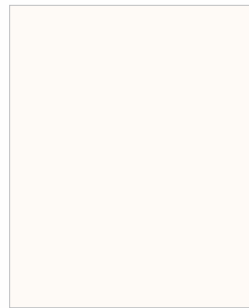




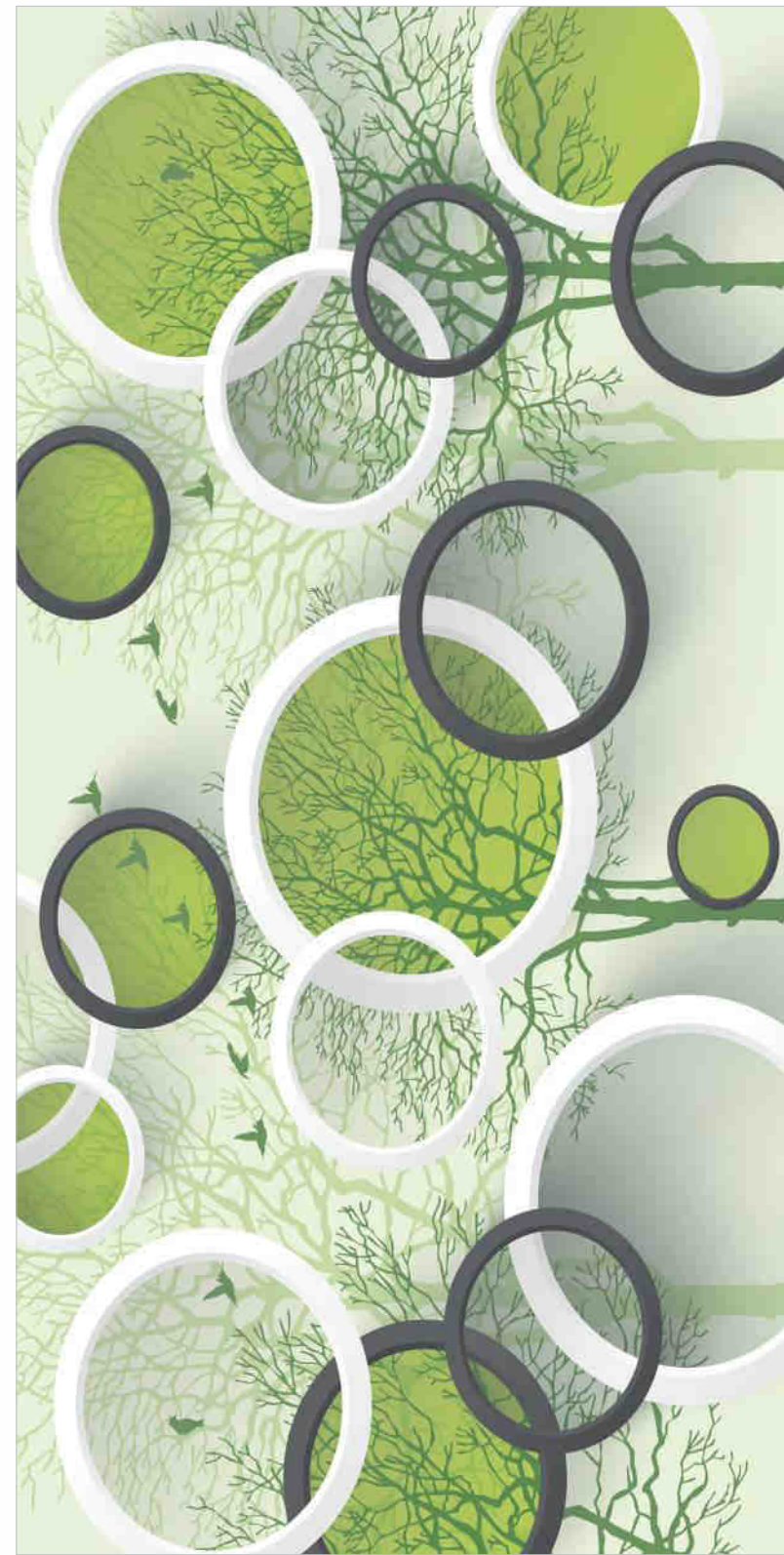
*Kitchen*  
concept



■ Suggested Colour



102-HG COLD WEISS



DG-15

HI-GLOSSY

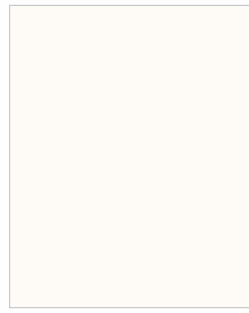




*Kitchen*  
concept



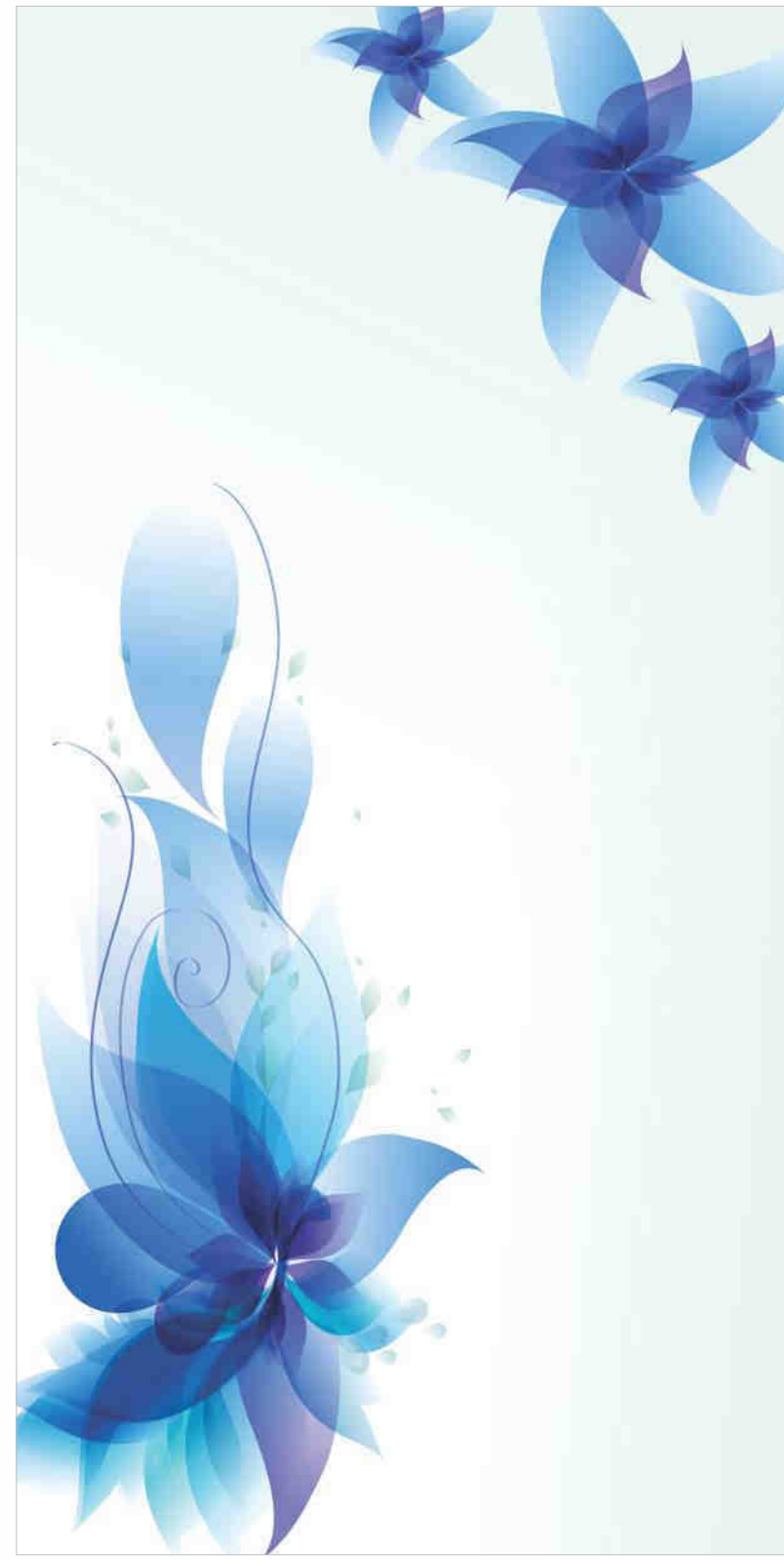
■ Suggested Colour



102-HG COLD WEISS



163-HG DEEP GREY



DG-16

HI-GLOSSY





Wallpaper  
concept



DG-01

ARMANI FABRIC FINISH





Wallpaper  
concept



Suggested Colour



977-AF (PR) LAVENDER



978-AF (PR) PEACOCK



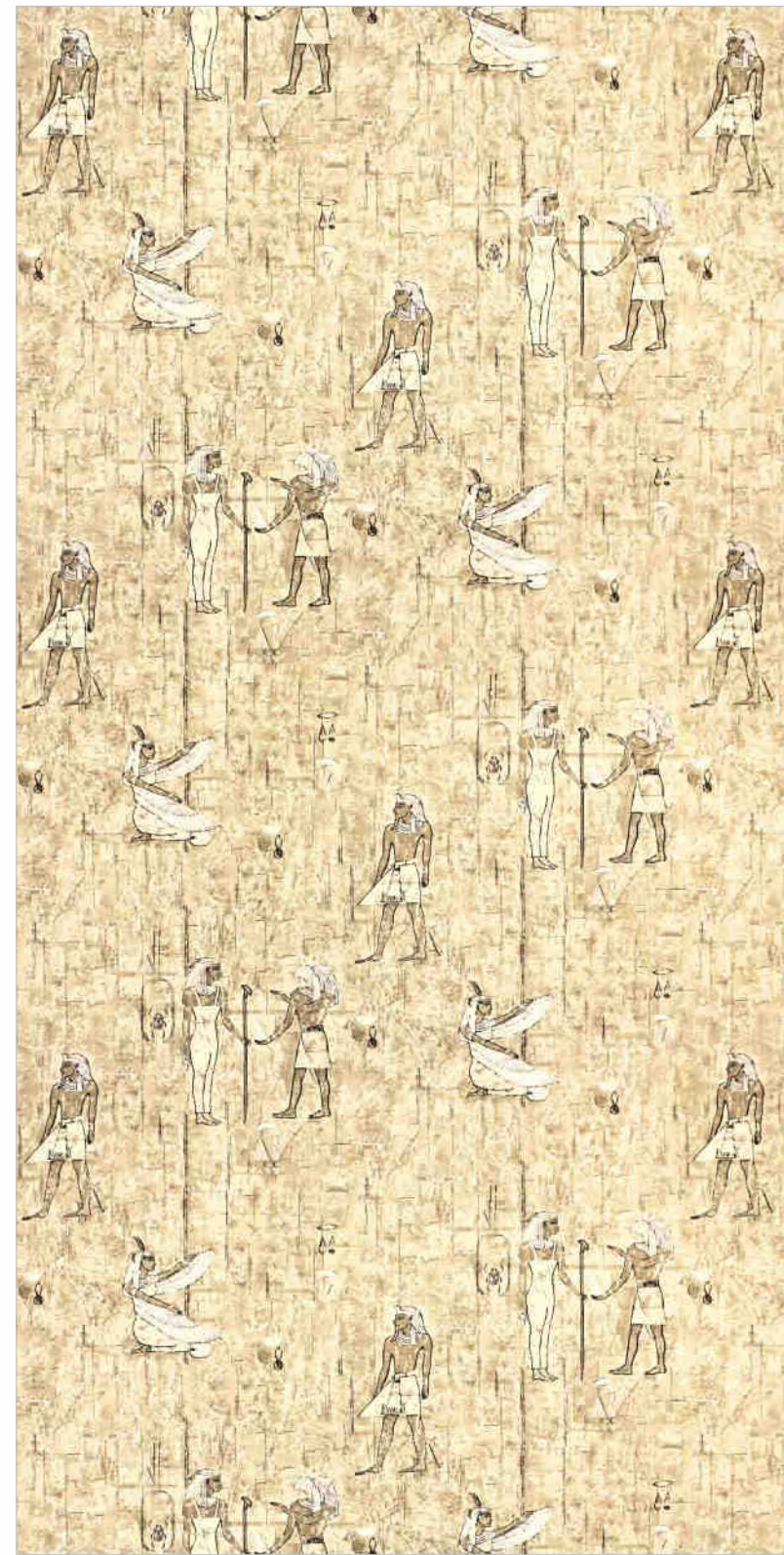
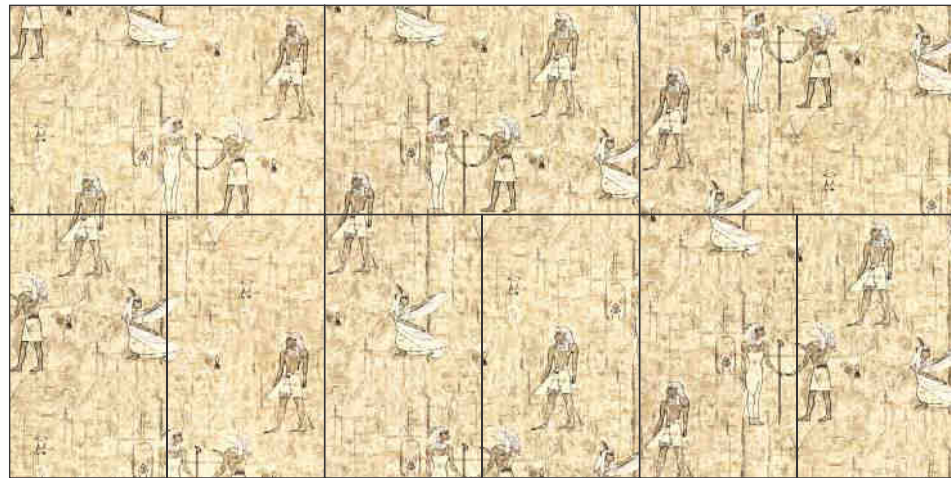
DG-02

ARMANI FABRIC FINISH





Wallpaper  
concept



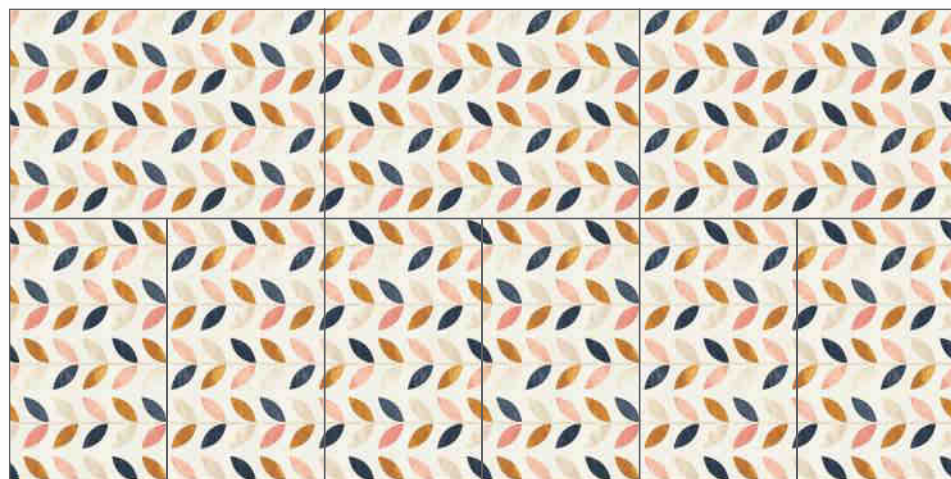
DG-03

ARMANI FABRIC FINISH





Wallpaper  
concept



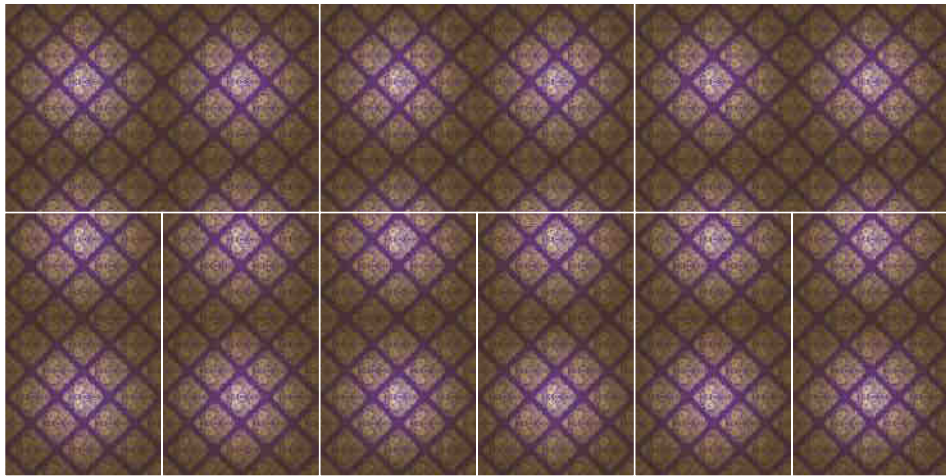
DG-04

ARMANI FABRIC FINISH





Wallpaper  
concept



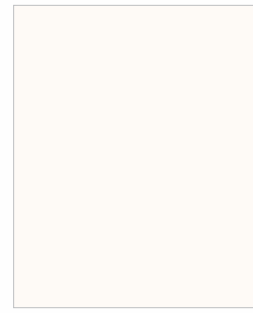
DG-05

ARMANI FABRIC FINISH





Wallpaper  
concept



102-HG COLD WEISS



166-HG ROSE PINK



DG-06

HI-GLOSSY







EX-03 PAGE-01



DG-01 PAGE-23



DG-02 PAGE-25



DG-03 PAGE-27



DG-04 PAGE-29



DG-05 PAGE-31



DG-06 PAGE-33



DG-07 PAGE-03



DG-08 PAGE-05



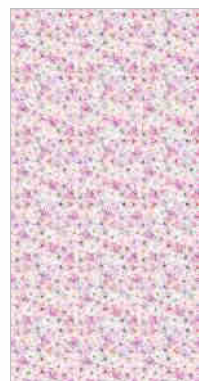
DG-09 PAGE-07



DG-10 PAGE-09



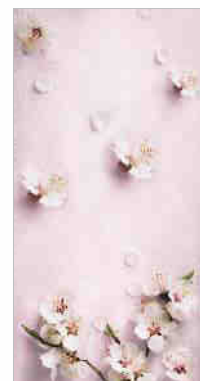
DG-11 PAGE-11



DG-12 PAGE-13



DG-13 PAGE-15



DG-14 PAGE-17



DG-15 PAGE-19



DG-16 PAGE-21

Properties	Specified Values as per IS:2046-1995	BELADOR CONFIRMS
Thickness	1.00 mm (± 10%)	✓
Resistance to Surface wear	350 (Revolutions)	✓
Resistance to immersion in boiling water -Mass increase (%) -Thickness increase (%) -Appearance.	10.0% (Maximum) 11.8% (Maximum) Not worse than 4	✓ ✓ ✓
Resistance to dry heat 180°C	Not worse than 4	✓
Dimensional Stability at deviated temperature -Longitudinal (%) -Transverse (%)	0.55% (Maximum) 1.025% (Maximum)	✓ ✓
Dimensional Stability at 20°C -Longitudinal (%) -Transverse (%)	0.375% (Maximum) 0.60% (Maximum)	✓ ✓
Resistance to impact by small diameter ball	20 N (Minimum)	✓
Resistance to cracking	Not worse than 4	✓
Resistance to scratching	2.0 N (Minimum)	✓
Resistance to staining	Not worse than 5	✓
Resistance to color change (Wool standard) -In xenon arc light -In enclosed carbon arc light	Not worse than 6 Not worse than 5	✓ ✓
Resistance to cigarette burns	Not worse than 3	✓
Resistance to steam	Not worse than 4	✓
Appearance	should be free from foreign particals	✓

Product : High Pressure Decorative Laminated Sheets  
 Size : 2440mm x 1220mm (8x4 Ft.)  
 Thickness : 1 mm (Other Thickness Available on Request)  
 Limited Warranty : Belador warrants That its products are reasonably free from manufacturing defects. The products when properly used, will comply, with normal deviations, to related Manufacturing Specification. It excludes damage resulting from accidents, Abuse or lake of care, improper use and /or any alteration. It is Recommended that the product must be inspected prior to installation and our liability will be limited to the extent of the cost of the product only. Belador Laminates are used for various applications, without possibility of control over the manufacturing of the finished product. The company does not assume obligations or liabilities arising from the Furnishing, Sale, Installation or Repair, use or subsequent sale of any product, to nay person or entity.  
 Care & Maintenance : Cleaning should be carried out with a soft moist cloth and warm solution. Do not use detergents containing abrasive particles or excess soda.

NOTE :  
 - Laminates are recommended for the indoor use only, not to be exposed to direct sunlight.  
 - The sample shown here only indicative of the color, patterns, finishes and not actual thickness.  
 - It is advisable to view full laminate sheets for actual patterns before purchase.  
 - Special thickness and finishes can be made available on request.  
 - In our endeavor to get the actual color, there may be difference between the catalogue and actual product due to different printing technologies. There may be sight color variations by production batches. Kindly reconfirm your color, design, and finishes with our dealers / distributors before placing your order.  
 - In case of any claims, the liability of the company is limited to the cost of the product only | All rights Reserved. No part of this catalogue may be reproduced in any from or by any means.







**BELADOR**  
INCREDIBLE LAMINATES

**MONAL LAMINATE PVT. LTD.**

8-A, National Highway, Lakhdirpur Road,  
Morbi - 363 642, (Guj.) INDIA.

E-mail : [beladorlaminat@gmail.com](mailto:beladorlaminat@gmail.com)  
[www.beladorlaminates.com](http://www.beladorlaminates.com)

