

Welcome to Puncture Protective Gel.

An Innovative solution to eliminate
Tyre puncture problem.

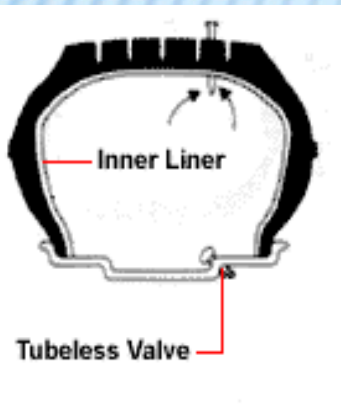
“By
Jai Maa Kali Enterprises.”
An ISO 9001:2015 Company

WWW.JMKE.IN

A short brief on types of tyres

Tubeless Tyre

Tyre and the rim of the wheel together form an air container–the inner wall of the tyre has an airtight lining.



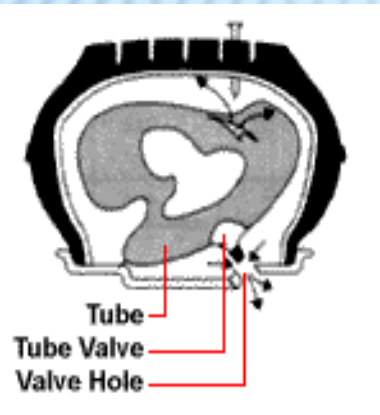
Air movement during puncture of a tubeless tyre:

If a sharp object, e.g. a nail, punctures the tread, air escapes only around the nail. Generally results in gradual deflation as long as the nail remains in the tyre: a typical “SLOW puncture”

A short brief on types of tyres

Tube Tyre

Tyre is kept inflated by air in the inner tube. Air pressure causes the tube's valve to fit into, and thus seal, the valve hole in the wheel rim.



Air movement during puncture of a tube tyre:

If a sharp object goes through the tread and punctures the tube, tube (and valve) immediately shrink leaving the valve hole unsealed. Air escapes QUICKLY, entire tyre collapses = flat tyre in seconds.

Tyre safety is must

DO NOT FIT TUBES INTO TUBELESS TYRES

- ❖ By inserting a tube into a tubeless tyre it is converted completely into a tube-type tyre and rim combination : i.e. It will deflate very quickly when punctured, and you may lose control of the vehicle.
- ❖ The running characteristics of the tubeless tyre can be adversely affected by inserting a tube, e.g. Side wall flexibility.



REASON FOR TYRE PUNCTURES

- ✓ A sharp object such as a nail or screw on the road.
- ✓ The tire bead, it's the sealing surface of the tire. Sometimes air will slowly leak out of the tire from this area.
- ✓ When air escapes from the tire and the wheel of alloy wheels.



Puncture Protective Gel

➤ About Puncture Protective Gel

- ✓ What it is
- ✓ How It Works
- ✓ Installation
- ✓ Packaging
- ✓ Applications
- ✓ MSDS



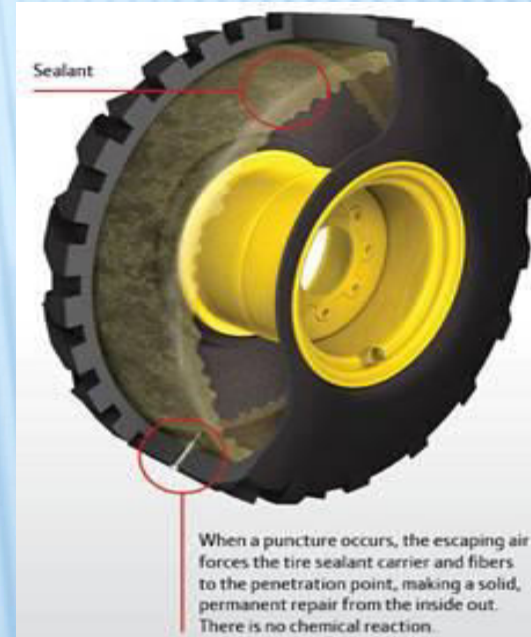
About Puncture Protective Gel

- Puncture Protective Gel is a viscous tyre sealant which is applied to new tyres as well as punctured tyre to protect them from punctures.
- Puncture Protective Gel is a proactive treatment that is applied to a tyre to automatically, instantaneously and permanently repair punctures.
- They basically work as a fluid / gel that repair any punctures by blocking the exit of air reducing the chances of being stranded with a flat tyre.
- It works for both “Tubeless” and “Tube Type”

Features of Puncture Protective Gel

➤ In Case of Tubeless Tyres

- ✓ Prevents flats!
- ✓ Instantly seals punctures up to $\frac{1}{4}$ inch
- ✓ Will not rust or corrode rims
- ✓ Won't freeze or dry up
- ✓ Installs easily, works continuously



Puncture Protective Gel



Puncture Protective Gel

Puncture proof Sealant

- Avoid accidents due to punctures and low tyre pressure
- Reduces fuel consumption by maintaining correct tyre pressure
- Extend the useful life of your tyres by up to 25%
- No more roadside puncture repairs

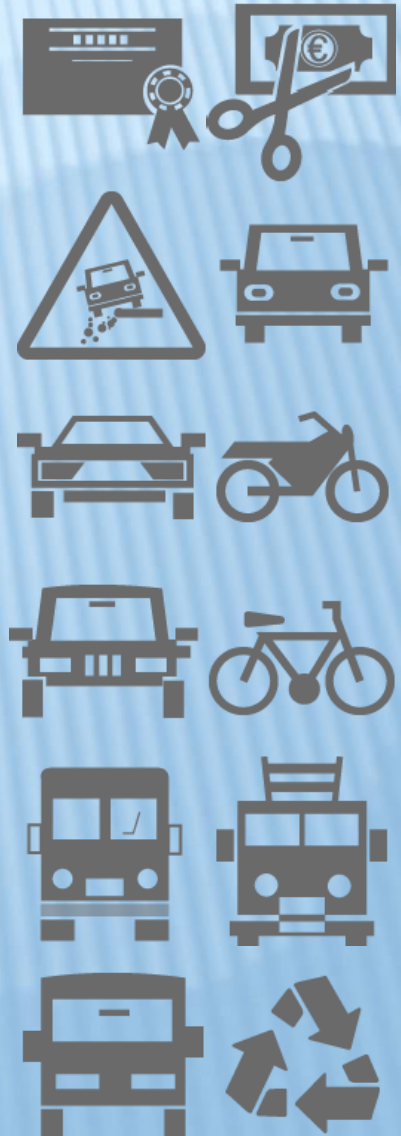


Hundreds Of Clients improved their road safety Thanks to Puncture Protective Gel

Puncture Protective Gel

EFFICIENT: –

- Eliminates punctures and slow air leaks during the useful life of the tyre
- Prevents punctures caused by objects of up to 8 mm
- For all types of vehicles; irregardless of their maximum speed



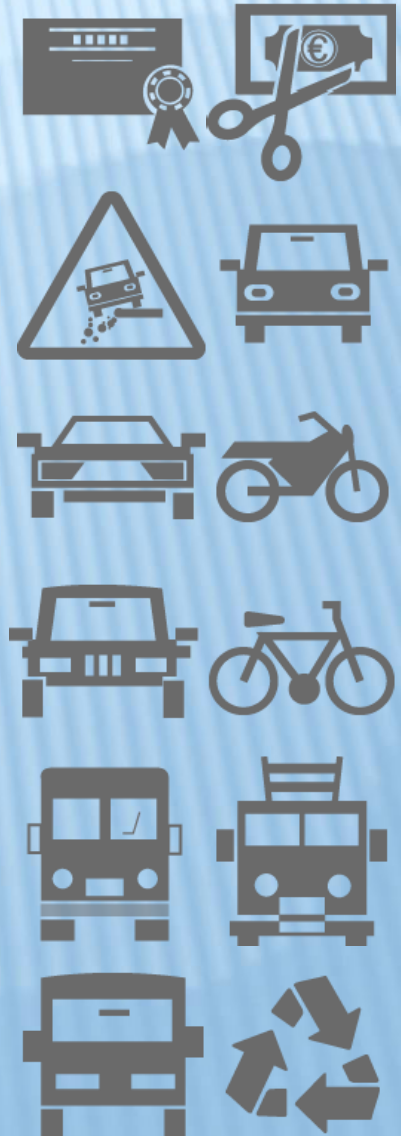
Puncture Protective Gel

✓ COST EFFECTIVE

- Prolongs the useful life of your tyres
- Reduces fuel consumption by maintaining correct tyre pressure
- The most cost effective puncture solution on the market

✓ SAFE

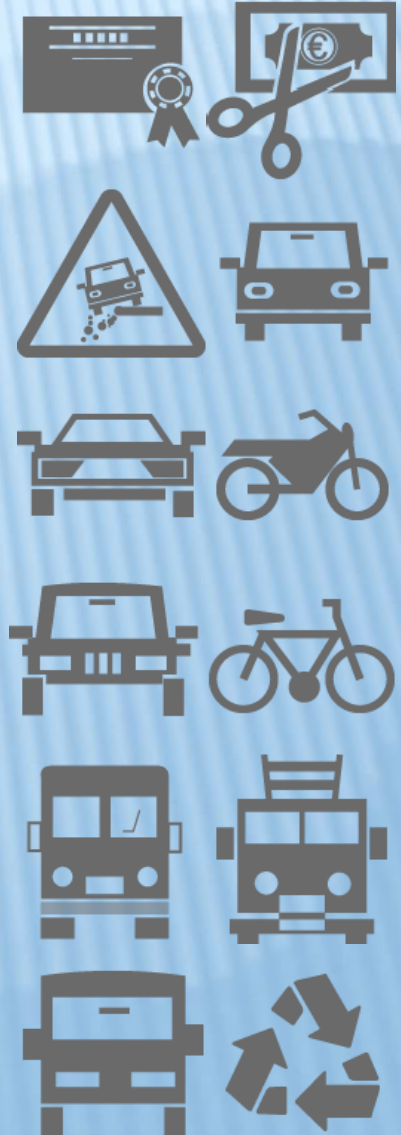
- Increases the active safety of your vehicle
- Eliminates the risks of riding / driving with incorrect tyre pressures
- No more roadside puncture repairs



Puncture Protective Gel

✓ ECOLOGICAL

- ✓ Reduces CO₂ atmospheric emissions
- ✓ Does not contain adhesives or other chemical elements which can harm tyres or rims.
- ✓ The only ecologically responsible tyre sealant.



Puncture Protective Gel

INSTALLATION

The installation of “Puncture Protective Gel” is
Quick and Easy

It can be
installed
directly by the
end customer
or in
authorized
workshops.

Required materials:

All required
materials are
supplied with
the
installation
kits.

Valve Core
Removal Tool,
to extract the
valve core

Transparent
Tube for
injecting
“BTS”
through the
valve

Installer simply
needs air
pump at hand
to inflate the
tyres

Puncture Protective Gel

Basic instructions:

STEP 1.– Remove the valve core from the valve and let the air out

STEP 2.– Place the tube on the valve and squeeze in the product

STEP 3.– Replace the valve core, inflate to the correct pressure
and spin the wheel



Puncture Protective Gel

PACKAGING

Puncture Protective Gel is available in three convenient packages.

The product is non-flammable, has an indefinite shelf life and has no specific requirements for distribution and/or storage.

500 ml

For Bicycle,
Motorbikes,
Cars, 4x4 & Light
Vans

10 liters

For Motorbikes,
Cars, 4x4 & Light
Vans.

20 liters

Jerry Can for off
road vehicles &
Heavy
Machinery,

PPG “Pro”

... and never have another puncture

BICYCLES. 200ml. Bottle. Only one bottle per bicycle.

- ✓ Just one bottle for both tyres
- ✓ No need for special tools
- ✓ Works in tubed and tubeless tyres
- ✓ Just one application lasts the life of the tyre
- ✓ The ideal accessory for riders security and comfort in pleasure, work or sports trips
- ✓ Specially recommended for MTB & BMX riders



PPG “Compact”

... and never have another puncture CARS,

MOTORBIKES AND LIGHT VANS.

500 ml bottle. (250 to 500 ml per wheel, based on wheel size.)

- ✓ Avoids accidents due to punctures and low tyre pressure
- ✓ Reduces fuel consumption by maintaining correct tyre pressure
- ✓ Prolongs the useful life of your tyres
- ✓ Works in vehicles of any speed
- ✓ Just one dose per tyre, no need to top up for one year
- ✓ Can be used in all types of tubeless tyres
- ✓ Increases the road safety of the vehicle, driver and passengers



PPG “Advance”

... and don't let a puncture stop your business

FLEETS, INDUSTRIAL VEHICLES & OFF ROAD.

A tried and tested investment.

- ✓ Reduces fuel consumption by maintaining correct tyre pressure
- ✓ Extends the useful life of your tyres by up to 25%
- ✓ Reduces maintenance and repair costs
- ✓ Works in vehicles of any speed and load
- ✓ Easy installation thanks to specially designed pump



PPG “Advance”

... when stopping is not an option HEAVY MACHINERY

& INDUSTRIAL VEHICLES.

- ✓ Repairs punctures caused by objects of up to 30 mm.
- ✓ Quick and easy installation with manual pump
- ✓ Designed for public services and private vehicles that require puncture protection in extreme conditions
- ✓ Recommended for heavy machinery, public works, mining and security vehicles operating in tough terrains



Puncture Protective Gel

Thanks for your business

www.jmke.in

Connect Us: –

Mob: – +91 9212 80 6000; +91 266 93 1111

Email: – Ashish.mishra@jmke.in