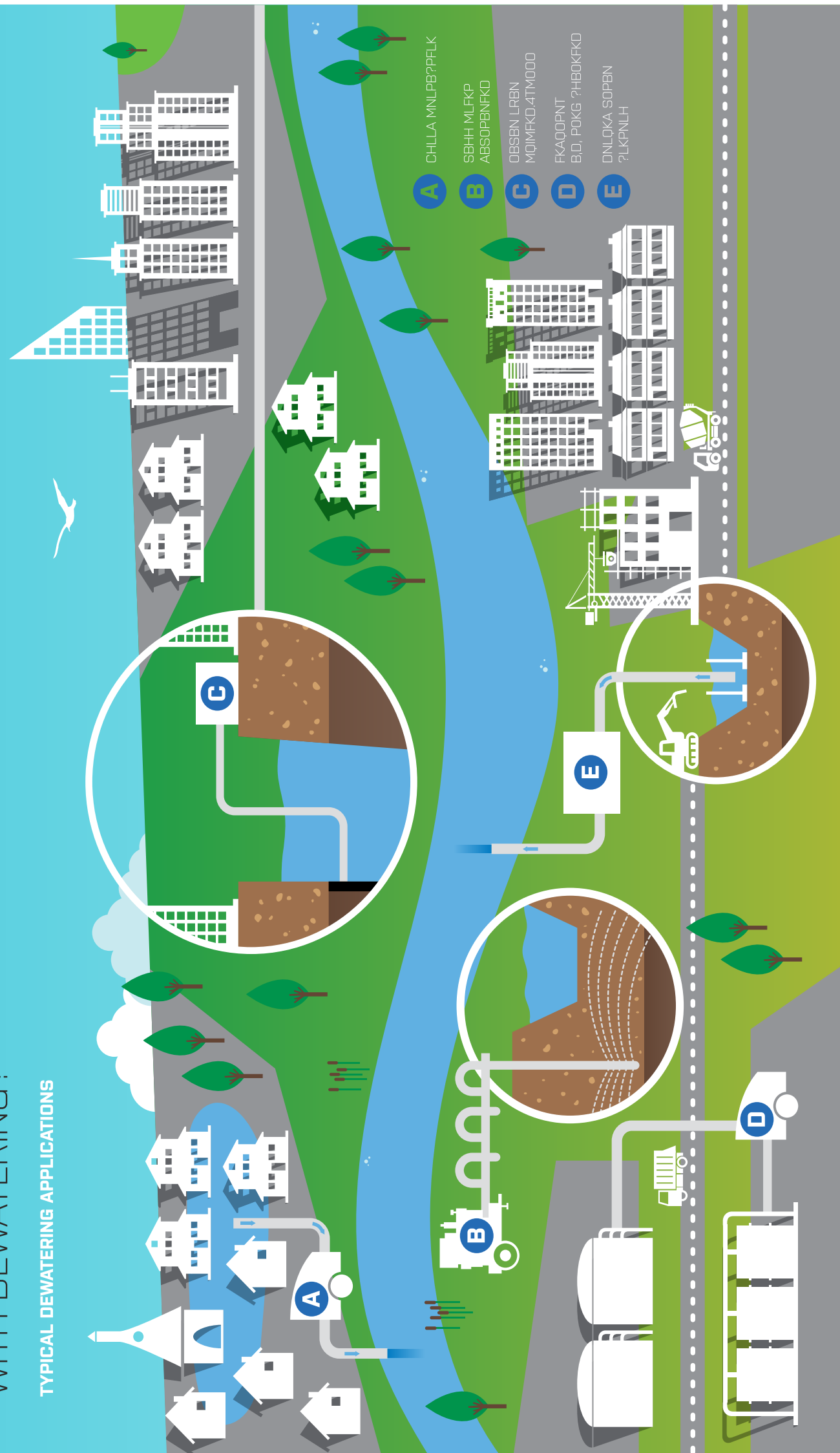


WHERE CAN THE
AUTOPRIME RANGE HELP YOU
WITH DEWATERING?

TYPICAL DEWATERING APPLICATIONS



- A CHILLA MUMBAI PRAK
- B SBH MUMBAI ABBEY ROAD
- C OBSERVEN LAREN MUMBAI
- D EKADANT BLD. POKK. 2HODKRO
- E ONLUKA SOBEN PUKPULH



Enriching Lives

KIRLOSKAR BROTHERS LIMITED
A Kirloskar Group Company
Established 1888

Registered Office: Udyog Bhavan, Tilak Road,
Pune-411002. Tel: +91 (20)24440770,

Global Headquarters: "Yamuna", Survey No. 98/(3.7),
Baner, Pune 411045. Tel: +91 (20)27214444,
Email: marketing@kbl.co.in, Website: www.kirloskarpumps.com,
CIN No.: L29113PN1920PLC000670

OUR COMPANIES



Enriching Lives

**DEWATERING SOLUTIONS:
THE AUTOPRIME RANGE**

KIRLOSKAR BROTHERS LIMITED
A Kirloskar Group Company
Established 1888

AUTOPRIME PUMP SERIES

Kirloskar Brothers Limited Autoprime APM Series pumps are high performance engine / motor driven pump unit designed to pump liquids containing mud, sewage and semi solids.

The Autoprime vacuum assisted pumps are available on site wheels, high speed road trailer or skid. The pumpset can be supplied as open or enclosed in an acoustic canopy.

Modular construction allows high interchangeability of components and ease of maintenance.

Applications:

- Ground water control
- Wellpoint dewatering
- Sewage over-pumping
- Flood relief
- Pipe relining
- Mine dewatering
- Industrial sludge pumping
- Tank sediment cleaning
- Emergency service pumping
- Marine ballasting



AUTOPRIME PUMPS for SPECIALISED DEWATERING needs in various projects.

COMPONENTS

Pump:

- APM Series pumps are end suction sturdy and robust design pumps
- Pumps are Mixed flow/Non Clog/Axial flow design
- Impellers are suitable for handling liquids containing solids at medium or low heads
- Available in 3 delivery orientation i.e. vertical, horizontal and oblique to cope up with customer requirements

Primemover (Engine /Motor):

- Engine** : Air/Radiator/HE cooled (1000 rpm and above)
- Engine Details** : Reputed make, inline engine with direct injection with compression ignition
- Motor** : Totally Enclosed Fan Cooled (TEFC SQ cage) or Special Protection Drip Proof (SPDP).

Auto Priming Unit:

The auto prime system has three major parts.

Priming Tank Assembly : The priming tank assembly is fitted to the suction branch of the pump. It provides for removal air drawn from the suction line and contains protection devices to prevent water from getting to the vacuum pump.

Vacuum Pump & Coalescer : The vacuum pump is driven by a V belt drive from the pump drive shaft, this draws air from the priming tank and passes it to the coalescer. The vacuum pump is lubricated by oil, some of which mixes with the air. The coalescer is required to separate the oil from the air thus discharging clean air to atmosphere and recycling the oil for lubrication.

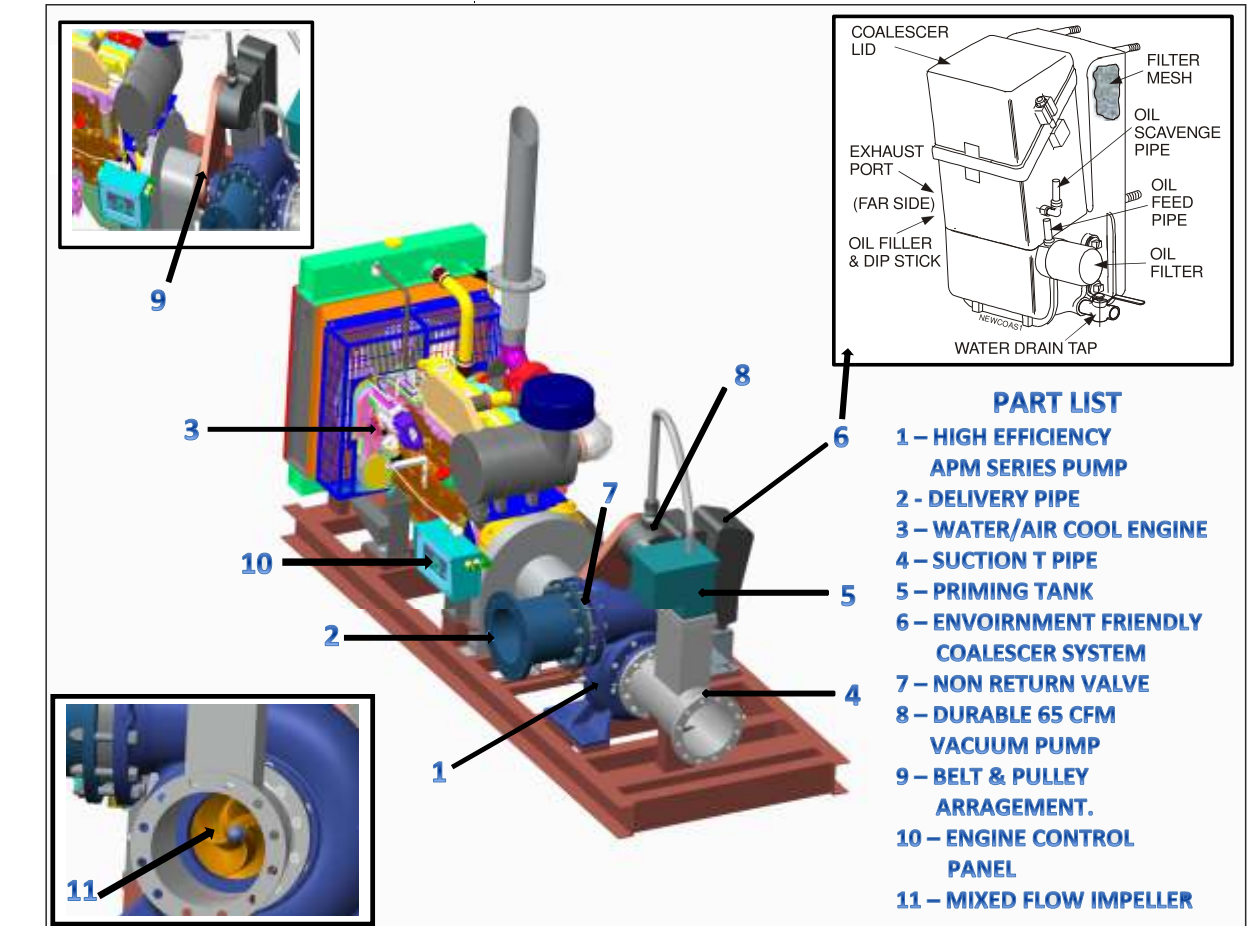
APM SERIES DESIGN FEATURES

- Pump can be left running when liquid is exhausted and will self prime when liquid is present
- Mechanical priming system is provided
- Rugged construction requires minimal operator maintenance
- 60 cfm Vacuum Pump with coalescer and air exhaust to atmosphere
- Rotary Vane, Oil lubricated Vacuum Pump : 60 cfm (100 m³/hr)
- No manual intervention for priming purpose is required

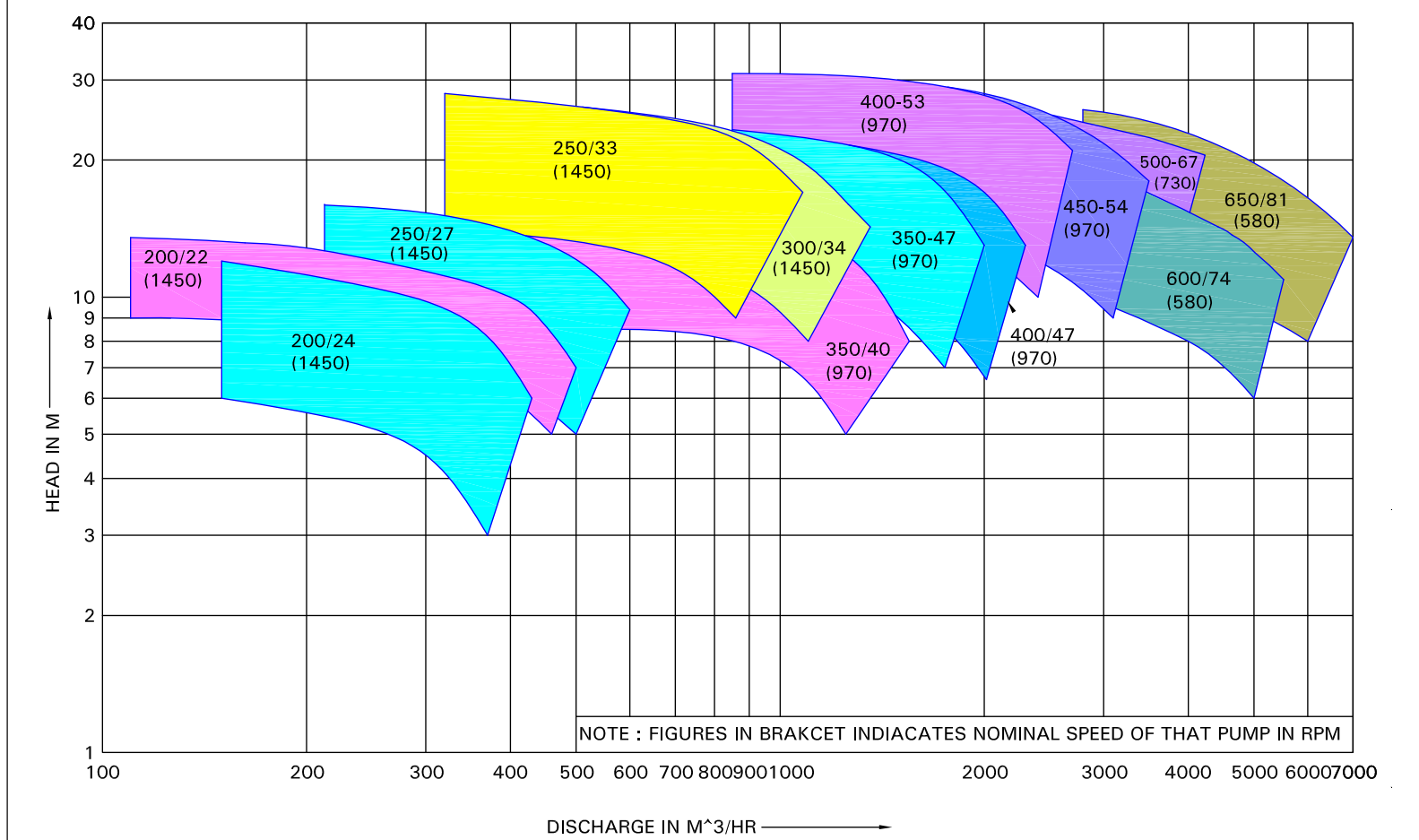
PUMP SPECIFICATIONS

Flow Rate	200 to 6000 m ³ /hr	Pump Casing	Cast Iron / Stainless Steel
Discharge Head	4 to 28 m	Impeller	Stainless Steel
Pump Speed Range	750 to 1500 rpm	Pump Shaft	ST ST ASTMA-276 TYPE 410 ,Carbon Steel
Max Solids Size	Up to 100 mm	Different Sizes	APM250/34 , APM300/34 , APM350/47, APM400/47, APM450/54

Cut-sectional View



PERFORMANCE CHARACTERISTICS OF KBL AUTOPRIME PUMP SERIES (APM)



PROVEN, TRUSTED, RELIABLE PUMP TECHNOLOGY

