



**Air Circulator**



**Man Cooler**



**Exhaust Fan**



**Portable Air Blower**



**Axial Flow Fan**



**Jet Fan**



**AC / DC Cabin Fan**



**Tea Withering Fan**



**Centrifugal Blower**



**Air Ventilator**



**Roof Extractor**



**Drum Fan**

# Contact Us:

📞 Nitin Nalawade - 8689928105

📞 Sunita M. - 9309575344

## PRICE LIST WEF 1<sup>st</sup> August, 2017

### EXHAUST FAN

Confirming to IS: 2312

Sweep		RPM	Supply Volt	Power Watt	PRICE (₹)
inch	mm				
9	230	1420	230	40	2015
12	300	920	230/415	45	3715
12	300	1420	230/415	82	3825
15	380	920	230/415	78	4125
15	380	1420	230/415	150	4230
18	450	920	230/415	132	5985
18	450	1420	230/415	370	6485
24	600	720	230/415	240	9905
24	600	920	230/415	500	10305
36	900	570	415	740	27225
36	900	720	415	1200	27695

### AIR CIRCULATOR

Confirming to IS: 2997

inch	Sweep		RPM	Supply Volt	Power Watt	Pedestal	PRICE (₹)	Wall-Bracket
	mm	Wings						
18	450	3	1440	230	90	7475	7145	
18	450	4	1440	230	90	7475	7145	
24	600	2	1440	230	115	8315	8045	
24	600	3	1440	230	125	8465	8185	
24	600	4	1440	230	160	8775	8495	
30	750	4	1440	230	200	10205	9925	

### MAN COOLER

Confirming to IS: 6272

Sweep inch	Sweep mm	Supply		RPM	Power		Pedestal	PRICE (₹)	
		Volt	Phase		Watt	HP		Wall	Tubular
12	300	230	Single	2850	250	0.33	21665	20185	-
12	300	415	Three	2850	250	0.33	20615	19215	-
19	480	230	Single	1440	375	0.5	23155	21515	24105
19	480	415	Three	1440	375	0.5	21555	19915	22405
19	480	415	Three	2900	1800	3.0	27375	25745	28465
24	600	230	Single	1440	500	1.0	24755	23115	25845
24	600	415	Three	1440	500	1.0	22855	21205	23965
30	750	415	Three	1440	1400	2.0	28255	26405	29955
36	900	415	Three	960	1500	2.0	38155	36835	40015
36	900	415	Three	1440	2000	3.0	36265	34945	38305
40	1000	415	Three	960	3500	5.0	41705	40505	42705
48	1200	415	Three	960	3700	5.0	58405	56905	60605

### PORTABLE AIR BLOWER

Sweep inch	Sweep mm	Supply Volt	Power Watt	RPM	PRICE (₹)
10	250	220-240	240	2815	13,650 /-
12	300	220-240	350	2775	16,250 /-

Note:

i) This cancels all our previous price list, ii) Prices are subject to change without prior notice  
iii) GST as per applicable, will be extra at the time of supply, iv) Prices are on ex-works basis

Approved by SAIL, BHEL, Ordnance Factories, Railways & other Government and Private Organisations



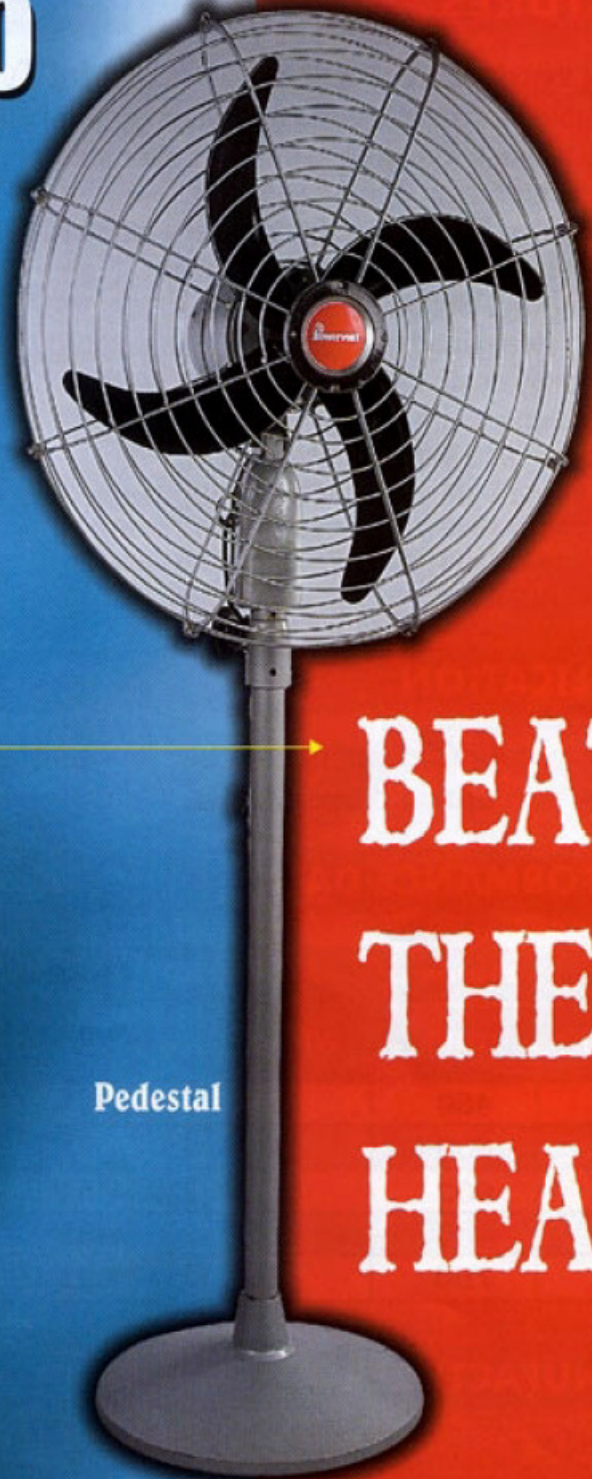


# FREEZY BREEZY FANS

## Best Way To



Bracket



Pedestal

# BEAT THE HEAT

*Heavy Duty Fans @ Light Duty Prices*



# AIR CIRCULATORS

[www.powerventfans.com](http://www.powerventfans.com)



**Powervent** Air circulators are super efficient, packed with wind-power and has style. They are available in both pedestal and wall mounting types in 450 mm (18"), 600 mm (24") and 750 mm (30") sweeps.

**Speciality :**

- Aluminium alloy one-piece blade
- Double ball-bearing
- Sturdy, close mesh guard
- Heavy duty motor
- Aesthetically beautiful

**FEATURES**

**Powervent Air Circulator - Pedestal Type**

- Available in attractive black and silver grey colours.
- Fitted with a large base to ensure better stability even at maximum operating height.
- Aerodynamically designed one piece aluminium die-cast impeller to give maximum air delivery with high air velocity.
- Strong streamlined pedestal for greater stability.
- Accurately designed spring for easy height adjustment.
- Minimum and Maximum heights.  
1100 mm to 1400 mm for 450 mm (18") sweep  
1400 mm to 1650 mm for 600 mm (24") sweep  
1500 mm to 1950 mm for 750 mm (30") sweep
- Built in regulator.

**Powervent Air Circulator - Bracket Type**

- Available in attractive black and silver grey colors.
- Trendy yet sturdy base.
- Switch mounted at an easily accessible position.
- Tilting screw provided for easy angle adjustment.
- Vertical adjustment from 22° to 45°

**APPLICATION**

**Powervent** Air Circulators are ideal for **factories, halls, auditoriums, lawns, restaurants, airports, railway stations and bus depots.**

**PERFORMANCE DATA**

Sweep			A.C. Supply (50 Cycles)	rpm	Power Input (Watts)	Distance from Fan (In Feet)	AIR DELIVERY	
inch	mm	wings					CFM	m <sup>3</sup> / hr
18	450	4	230 / 415 V	1440	90	9	7050	12000
24	600	2	230 / 415 V	1440	115	12	10,000	17,000
24	600	3	230 / 415 V	1440	125	12	11,000	18,700
24	600	4	230 / 415 V	1440	160	12	14,000	23,800
30	750	4	230 / 415 V	1440	200	15	17,000	28,900

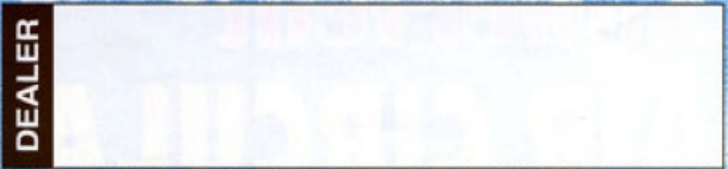
Generally conforming to IS : 2997

**MANUFACTURER**

**ZENCO INDUSTRIES**

Sales office : Rudrakshya, Shop No.03, Plot No.53A, Karanjade, A.R Construction, Dist - RAIGAD, Panvel - 410206.  
Regi. Address : A3,Niemall Market,PCNTDA, Chikhali Road, Purnanagar, Pune -411018.

Email : [zenco.sales@gmail.com](mailto:zenco.sales@gmail.com) Mob: +91 08689928105 / 9309575344  
Web:<http://www.zencoindustries.com> OR <http://www.zencoindustries.in>

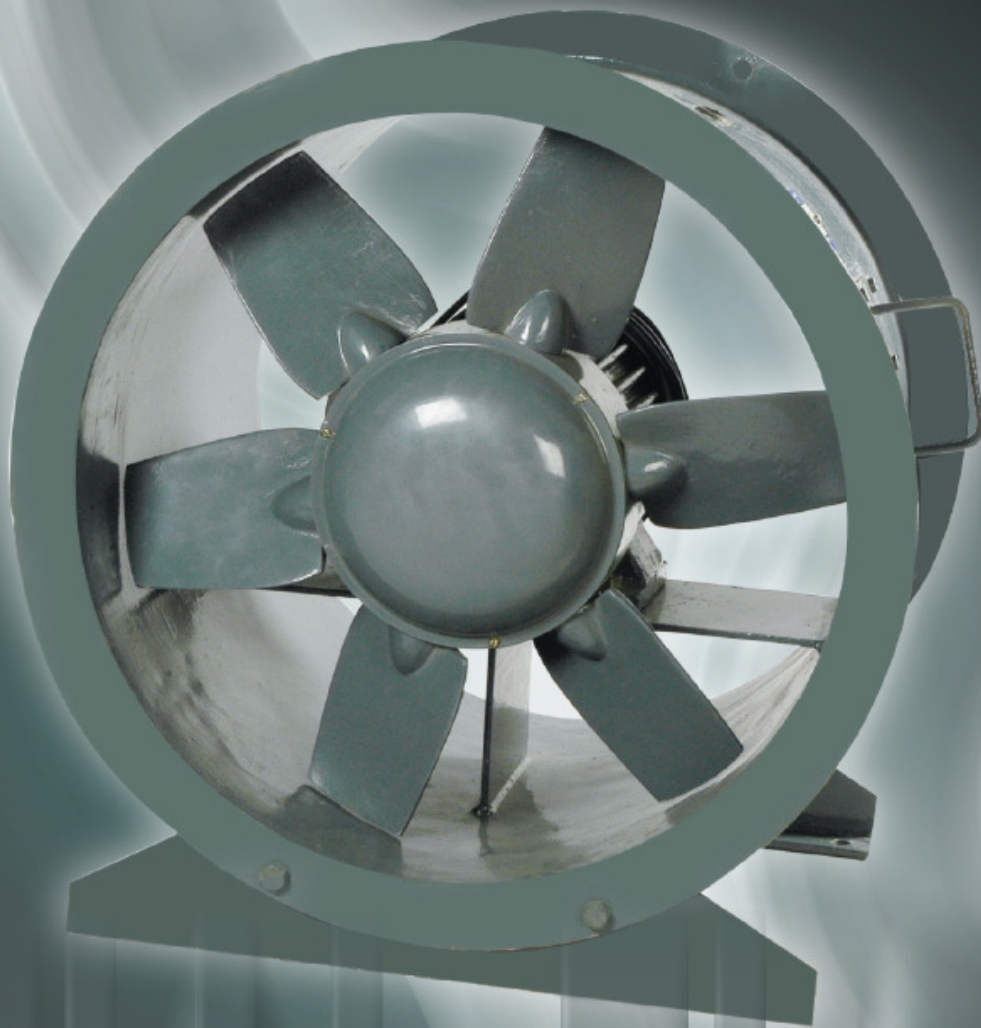


Since continuous development for improvements is a way of life with us, the product supplied may differ in minor details from what has been described in this leaflet





[www.powerventfans.com](http://www.powerventfans.com)



# AXIAL FLOW



The Axial Flow Fan has been specially designed for removal of dust and fumes in work places where, due to long ducts, system-resistance is high and other conventional Exhaust Fans will not serve the purpose.

The basic functions of ventilation and air-conditioning are effectively performed by Axial Flow Fans, especially in industrial process system, crop drying, mines and ships.

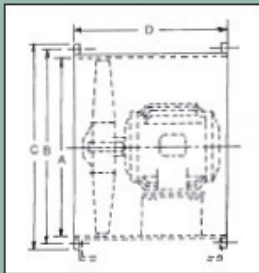
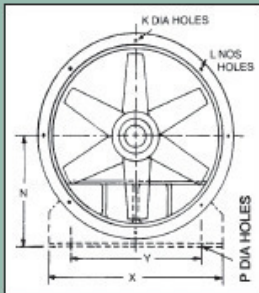
**Quality :** The Powervent Axial Flow Fan is manufactured with components of proven quality. The concept of quality circle has been integrated with a full-proof quality assurance system, production techniques and rigorous in-stage inspection.

**Power :** The Powervent Axial Flow Fan is driven by motors of high efficiency. The motors are capable of withstanding voltage fluctuation and rigorous duty requirements in hot and humid conditions.

**Range and Duty :** The Powervent Axial Flow Fan is present in single-stage, double-stage, contra-rotating and multiple-stage. The volume of air can be controlled by switching off some of the fans running in series. The Powervent Axial Fan fulfills a wide range of requirements - large volumes, high pressure, quietness, high temperature, wet conditions are all catered for. Whether the duty is air-conditioning or cooling sophisticated electronic equipment, there is a Powervent Axial Flow Fan for the purpose.

The fans can be mounted in various ways - horizontal, upward, downward. The variety also lies in long and short casings, bifurcated type and belt driven type.

### Dimensions



Impeller Dia.	Motor Frame Size	A	B	C	D	E	F	G	H	I	J	
inch.	mm.	mm.	mm.	mm.	mm.	mm.	mm.	mm.	mm.	mm.	mm.	
15	380	80	385	435	471	410	245	12	380	330	10	8
15	380	90L	385	435	471	410	245	12	380	330	10	8
19	482	80	485	535	571	410	335	12	480	430	12	8
19	482	90L	485	535	571	410	335	12	480	430	12	8
19	482	112M	485	535	571	470	335	12	480	430	12	8
19	482	132S	485	535	571	525	335	12	480	430	12	8
24	610	80	614	664	700	410	355	14	600	500	12	8
24	610	90L	614	664	700	410	355	14	600	500	12	8
24	610	100L	614	664	700	470	355	14	600	500	12	8
24	610	132S	614	664	700	525	355	14	600	500	12	8
24	610	132M	614	664	700	525	355	14	600	500	12	8
30	760	90L	765	817	853	470	450	14	750	650	14	8
30	760	100L	765	817	853	525	450	14	750	650	14	8
30	760	100L	765	817	853	525	450	14	750	650	14	8
30	760	132S	765	817	853	600	450	14	750	650	14	8
36	914	112M	920	984	1028	525	540	14	900	750	14	8
36	914	132M	920	984	1028	600	540	14	900	750	14	8
36	914	132M	920	984	1028	600	540	14	900	750	14	8
48	1220	132M	1225	1293	1337	600	710	17	1200	1050	17	8

### Performance Chart

Impeller Diameter	Motor Frame size	Motor Rating KW	RPM	CMH FID	CMH at different static pressures in SWG					Density 0.075 lb / ft <sup>3</sup>		
					5 mm.	10 mm.	15 mm.	20 mm.	25 mm.	30 mm.	40 mm.	50 mm.
305	71	0.37	2850	4500	4150	3900	-	-	-	-	-	-
380	80	0.75	1420	3220	2550	2000	-	-	-	-	-	-
380	80	0.75	2800	5300	5050	4900	4700	4550	4200	3500	-	-
482	80	0.75	1420	7500	7000	6200	-	-	-	-	-	-
482	90L	1.50	2850	8500	8100	7100	6950	6600	5800	4600	-	-
482	112M	3.70	2850	13800	13600	13400	13250	13200	12700	12000	1200	10100
482	132S	5.50	2850	16000	15750	15500	15200	14900	14350	13500	12250	11500
610	80	0.75	1420	10100	9600	8700	7800	6500	-	-	-	-
610	90L	1.50	1420	14200	13500	12700	11700	10500	-	-	-	-
610	100L	2.20	1420	16000	15500	14250	13000	12200	-	-	-	-
610	132S	5.50	2850	17500	17000	16500	16250	16000	15500	15000	14500	14000
610	132M	7.50	2850	23000	22750	22600	22400	22000	21500	20900	20000	19500
760	90L	1.10	950	15500	14500	13500	-	-	-	-	-	-
760	100L	1.50	950	17500	16000	15200	-	-	-	-	-	-
760	100L	2.20	1425	20000	19300	18600	17700	16500	15300	13800	-	-
760	132S	5.50	1425	30000	29500	28000	27300	26000	24800	23250	-	-
914	112M	2.20	950	27000	25000	23800	23000	22000	-	-	-	-
914	132M	5.50	950	43000	41250	40000	38000	36500	33000	-	-	-
914	132M	7.50	1425	38000	37100	36100	35200	32500	31100	28000	24200	20000
1220	132M	5.50	950	40000	39000	37500	36500	34000	32000	29000	22000	-

### OUR OTHER PRODUCTS

- Centrifugal Blowers
- Man Coolers
- Air Circulators
- Exhaust Fans
- Ceiling Fans
- Table / Wall and Pedestal Fans
- Cabin Fans
- Cooling Fans
- Motors
- Roof Extractors
- Custom Built fans
- Spares & Accessories

## ZENCO INDUSTRIES

Sales office : Rudrakshya, Shop No.03, Plot No.53A, Karanjade, A.R Construction, Dist - RAIGAD, Panvel - 410206.  
 Regi. Address : A3,Niemall Market,PCNTDA,Chikhali Road, Purnanagar, Pune -411018.

Email : zenco.sales@gmail.com Mob : +91 08689928105 / 9309575344  
 Web : http://www.zencoindustries.com OR http://www.zencoindustries.in

DEALER

Since continuous development for improvements is a way of life with us, the product supplied may differ in minor details from what has been described in this leaflet





Heavy Duty Fans @ Light Duty Prices  
**Powervent**<sup>®</sup>  
[www.powerventfans.com](http://www.powerventfans.com)



**BRACKET**



**TUBULAR**



**PEDESTAL**

# MANCOOLER

The Solution to Industrial Heat Problems



## NEED

Workers tend to lose energy and get exhausted while working in the intense heat on the shopfloors. This results in loss of productive capacity, decrease in output and strain in human relations. So a cooling appliance becomes essential. This is where **Powervent** Mancooler steps in.

## QUALITY

The **Powervent** Mancooler is superbly designed and manufactured to provide the best cooling comfort and is useful even in areas of high temperature such as steel plants and foundries. It cools the body by producing a high velocity air stream with maximum reach. The blast of air provided by it sets in motion the surrounding air, which increases as it covers distance.

## APPLICATIONS

- All shopfloors, specially those with furnaces, foundries and heat producing apparatus.
- Factories with large number of workers and machines.

- Cooling of brick kilns, cooling bottles in glass works, tempering furnaces and electrical equipment.
- Industrial cooling of castings, generators and other machines.
- Dehydration in cold storage of perishable and edible products.

## BENEFITS

It increases productive capacity and at the same time, improves industrial relations. It acts as the substitute for several fans of other types.

## VARIANTS

- A. PEDESTAL TYPE :** It is designed to be placed on the floor. The impeller and Motor are mounted on a heavy base and a robust supporting column.
- B. BRACKET TYPE :** It is useful where adequate floorspace is not available and it is fixed to the wall or column.
- C. TUBULAR TYPE :** In this type the Impeller and Motor Assembly is placed in a Tubular Casing having a provision for angular adjustment so as to channelise the air stream in the required direction. It is portable and stands steadily even on rough surface.

## TECHNICAL DATA

Sweep		Supply		Speed	Power	Total Air Delivery at 10 times Blade Sweep		Minimum Peak Air Delivery at a distance of		
								10 times Blade Sweep	15 times Blade Sweep	
Inch	mm	Volts	Phase	rpm	Watts	HP	C.F.M.	m <sup>3</sup> /hr	m <sup>3</sup> /min	m <sup>3</sup> /min
12	300	230/415	Single/Three	2850	250	0.33	5250	9000	250	200
19	480	230	Single	1440	375	0.5	7000	12000	200	120
19	480	415	Three	1440	375	0.5	7000	12000	200	120
19	480	415	Three	2900	1800	3.0	13000	22000	250	200
24	600	230	Single	1440	500	1.0	16500	28000	250	150
24	600	415	Three	1440	500	1.0	16500	28000	250	150
30	750	415	Three	1440	1400	2.0	21500	37500	250	150
36	900	415	Three	960	1500	2.0	32500	55250	250	150
36	900	415	Three	1440	2000	3.0	37500	63750	275	175
40	1000	415	Three	960	3500	5.0	37000	63000	250	150
48	1200	415	Three	960	3700	5.0	43800	74500	250	150

Generally conforming to IS : 6272

## ZENCO INDUSTRIES

Sales office : Rudrakshya, Shop No.03, Plot No.53A, Karanjade, A.R Construction, Dist - RAIGAD, Panvel - 410206.  
 Regi. Address : A3, Niemall Market, PCNTDA, Chikhali Road, Purnanagar, Pune - 411018.

Email : zenco.sales@gmail.com Mob : +91 08689928105 / 9309575344  
 Web : http://www.zencoindustries.com OR http://www.zencoindustries.in

DEALER

Since continuous development for improvements is a way of life with us, the product supplied may differ in minor details from what has been described in this leaflet



# PORTABLE AIR BLOWER

- Light Weight
- Easily Portable
- Two Speed



A unique product ideally suitable for exhaust/ ventilation of hot, humid, dusty air/smoke at the source itself from welding areas, factories, enclosed spaces in ships/vessels.



# PORTABLE AIR BLOWER

Removing and ventilating fumes produced by welding, glass flaming/blowing, soldering, plasma or laser cutting, and similar operations is a critical concern in today's safety-conscious work environment. **POWERVENT** Portable Air Blower is an economical and convenient way to remove smoke, fumes and/or heat at their source to help assure worker safety and comfort.

The portable unit is simply rolled-up to the location where the fumes are being produced. The operator plugs in the unit to a standard electrical supply (220-240V), directs the discharge hose to the desired exhaust location, and aims intake hose with collection hood at the fume area.

Unlike exhaust fans or fixed overhead hoods, **POWERVENT** Portable Air Blower goes right to the source to capture and remove virtually all process emissions. It employs a negative pressure system that exhausts all fumes quickly to the outside or into existing ductwork.

## FEATURES

- Easy to install
- Can be easily moved to a different location- an advantage over exhaust fans and fixed overhead hoods
- With speed regulator
- Matching hose/ duct can be attached
- Powder Coated
- Safety Grill on both sides
- Light weight



**1** Year Warranty!

## TECHNICAL DATA

Sweep		Supply	Power	Current	Speed	Air Delivery		Noise
Inch	mm	Volts	Watt	Amp	rpm	cfm	cmh	dB
8"	200	220-240V	180	0.78	2900	1940	3300	8.75
10"	250	220-240V	240	1.04	2815	2400	4100	10.76
12"	300	220-240V	350	1.52	2775	2890	4900	12.78

Accessories: Hose/Duct for respective sizes



## ZENCO INDUSTRIES

Sales office : Rudrakshya, Shop No.03, Plot No.53A, Karanjade, A.R Construction, Dist - RAIGAD, Panvel - 410206.

Regi. Address : A3,Niemall Market,PCNTDA, Chikhali Road, Purnanagar, Pune -411018.

Email : zenco.sales@gmail.com Mob :+91 8689928105 / 9309575344  
 Web :http://www.zencoindustries.com / http://www.zencoindustries.in



ZENCO INDUSTRIES FAN

[www.zencoindustries.com](http://www.zencoindustries.com)

Contact No - 8689928105 / 9309575344



IS : 2312

**HEAVY DUTY**

**EXHAUST**

**FAN**



**TECHNICAL FEATURES & DATA :**

**MOTOR**

**POWERVENT** Exhaust Fans are provided with capacitor start and run induction motors of robust construction, totally enclosed, continuous rated type and specially designed for fan duty. Direction of rotation can be changed simply by interchanging connections of the stator windings. The product range conform to IS specification No. 2312/1967, and are generally provided with Class 'B' Insulation; class 'F' Insulation can be offered to meet special requirements. The fan motors are provided with two ball bearings adequately lubricated.

**IMPELLER**

The impeller are designed for adequate air displacement at low power consumption, effected by blades with deep curvatures and broad surfaces; and are fully balanced to ensure uniform load on bearings and long trouble-free service life.

**SPECIAL PROTECTION**

On specific requirement **POWERVENT** Exhaust fans can be supplied with :

- A. Chlorinated rubber paint finish
- B. Epoxy based paint finish
- C. IP55 Protection

Sweep		Speed rpm	Volts	Power Consumption (Watts)	AIR DELIVERY	
inch	mm				C.F.M.	m <sup>3</sup> / hr.
9	230	1420	230	40	440	760
12	300	920	230/415	45	750	1270
12	300	1420	230/415	82	1120	1900
15	380	920	230/415	78	1450	2460
15	380	1420	230/415	150	2350	4000
18	450	920	230/415	132	2550	4340
18	450	1420	230/415	370	4000	6800
24	600	720	230/415	240	4650	7900
24	600	920	230/415	500	6150	10450
30	750	720	415	700	9000	15300
36	900	570	415	740	13000	22100
36	900	720	415	1200	16500	28000

\* Free Intake and Delivery Generally Confirming to IS:2312

**SELECTION**

PROBABLE LOCATIONS	AIR CHANGES PER HOUR	Example 1
OFFICE HALL / BANK / HOSPITAL WARD	08 - 12	Location : Office Volume : 10m x 10m x 4m = 400 m <sup>3</sup> Required air changes per hour = 10 Air movement : 400 x 10 = 4000 m <sup>3</sup> /hr Requirement of Exhaust Fans = 2 Nos. 12" / 1420 RPM
FACTORY / WORKSHOP	12 - 20	Example 2 Location : Factory Volume : 130m x 20m x 8m = 4800 m <sup>3</sup> Required air changes per hour = 20 Air movement : 4800 x 20 = 96000 m <sup>3</sup> /hr Requirement of Exhaust Fans = 9 Nos. 24" / 920 RPM
CANTEEN / RESTAURANT	15 - 20	
BOILER HOUSE / FOUNDRY	40 - 60	
CINEMA / AUDITORIUM / KITCHEN / TOILET PHOTOGRAPHIC DARKROOM	20 - 30	
LABORATORY	08 - 30	

**ANCILLARY EQUIPMENT**

Against specific order, **POWERVENT** Exhaust Fans can be supplied with ancillary equipment viz. Wire Guard, Wall Cowls, Louvre Shutters, Regulators etc.

**LOUVRE SHUTTERS**



- Robust Construction
- Compatible with our fans
- Anti Rust treatment
- Bird Net provided
- Compatible with our fans
- Opens 45° when fan is on
- Pre-painted
- Long life

**WALL COWLS**



**REGULATORS**



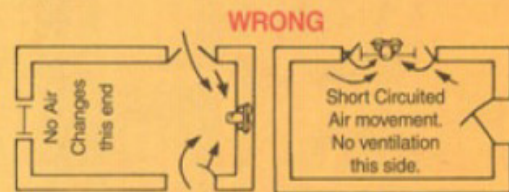
- Long life
- Saves Power
- Sturdy Construction
- Compatible with our fans
- Strong Construction
- Compatible with our fans
- Anti Rust treatment
- Safety aspect taken care

**WIRE GUARDS**



**INSTALLATION**

**POWERVENT** Exhaust Fans should be installed in such a way as to draw fresh air movement throughout the room or building to be ventilated so that it prevents formation of air pockets and the stale air is totally extracted. It is recommended to mount the fan on a wall opposite the inlets and at highest possible level normally not less than 7' so that any smoke, steam or odour laden air, warmer than ambient temperature within the room and having tendency to arise, can be effectively exhausted. The exhaust fan should be installed at a higher level than ceiling fan blades, if both are located in same area. The sketch shows correct installation of exhaust fans.



**ZENCO INDUSTRIES**

Shop No.03, Plot No.53A, Sector 03, Karanjade, A.R Construction, Dist - RAIGAD, Panvel - 410206.

Web : <http://www.zencoindustries.com>

Contact No- 8689928105/ 9309575344

Email- [zenco\\_enquiry@gmail.com](mailto:zenco_enquiry@gmail.com)

**DEALER**

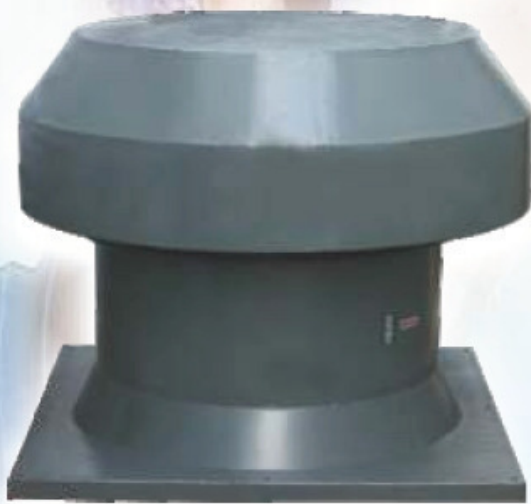
Since continuous development for improvements is a way of life with us, the product supplied may differ in minor details from what has been described in this leaflet





# Roof Extractor

- HEAVY DUTY • SMOOTH RUNNING • ROBUST CONSTRUCTION



CONVENTIONAL  
MS EXTRACTOR



MODERN  
FRP EXTRACTOR

Most Modern And Unique Product Ideally Suitable  
for exhausting Hot / Humid / Dusty Air through roof  
from Factories, Godowns, Buildings and enclosed Spaces





# Roof Extractor

- CONVENTIONAL MS EXTRACTOR ● MODERN FRP EXTRACTOR

● **Powervent Roof Extractor** comprises of fan unit with curb mounting square base, aerofoil blade Impeller mounted directly on the motor and a rain protection cowl on the top. It allows sideways dispersal of hot, humid and dusty air through roof from Factory shed, Godowns, Buildings and enclosed spaces.

● **Powervent Roof Extractor** can be installed on flat or slant roof. A fabricated supporting base structure is required for mounting on slant roof on which exposed sides are to be properly covered to prevent any leakage of rain water.

● **Powervent FRP Roof Extractors** are specially designed and developed to handle large volumes of hot, contaminated, corrosive air and gases without getting affected by weather and corrosive gases. **FRP Roof Extractors** are light in weight but very strong and can be mounted on light structure with low installation cost. It does not require periodic maintenance, painting, so it is economical also.

## TECHNICAL SPECIFICATIONS

SWEEP		TOTAL WT. (Kg)		MOTOR		SPEED	CAPACITY	
inch	mm	M.S.	FRP	HP	kW	rpm	cfm	cmh
24	600	95	45	1.0	0.75	1440	7000	12000
24	600	98	48	1.5	1.10	1440	8500	14500
36	900	185	100	2.0	1.50	960	16500	28000
40	1000	200	110	3.0	2.20	960	23000	39100

Note : Since continuous development for improvements is a way of life with us, the product supplied may differ in minor details from what has been described in this leaflet.

## ZENCO INDUSTRIES

Sales office : Rudrakshya, Shop No.03, Plot No.53A, Karanjade, A.R Construction, Dist - RAIGAD, Panvel - 410206.

Regi. Address : A3,Niemall Market,PCNTDA, Chikhali Road, Purnanagar, Pune -411018.

Email : [zenco.sales@gmail.com](mailto:zenco.sales@gmail.com) Mob : +91 08689928105 / 9309575344  
Web : <http://www.zencoindustries.in> OR <http://www.zencoindustries.com>





# DRUM FAN

*Easily Portable | Light Weight | Powder Coated*



A unique and modern product ideally suitable for smoothly ventilating large areas, be it an Office Hall, Bank, Hospital Ward, Factory, Workshop, Canteen, Auditorium or Laboratory. The impeller and motor assembly is placed in a tubular casing having a provision for angular adjustment thereby channelizing the air stream in the required direction. It is portable and stands steadily even on rough surfaces.



# DRUM FAN

## DESCRIPTION

- POWERVENT Industrial Movable Drum Fans are packed with features to assist and help you get the job done comfortably
- Features such as an energy efficient induction motor, 2 speed switch, high velocity air flow, heavy duty constructed frames, drum & safety grills, 3 wide aluminium blades, tiltable drum & wheels to make it easy to manoeuvre around the workplace
- With a good air velocity this unit is perfectly suited for ventilating small to medium areas indoors or outdoors. The tiltable drum body enables you to position the fan where needed and tilt the fan body allowing you to ventilate almost any area you need
- The heavy duty wheels mean you can roll or manoeuvre the fan from the workshop, shed, garage or work vehicle straight to where you need to ventilate, avoiding the need to carry a heavy fan leading to potential injury.
- The fan comes fully assembled and ready to go straight from the box which means no down time having to assemble it once you get home or onto the job site
- POWERVENT Industrial Movable Drum Fans are built tough and will last the distance when using them out in the field.

**1** Year Warranty!

## TECHNICAL DATA

Sweep		Supply	Power	Current	Speed	Air Delivery		Noise
Inch	mm	Volts	Watt	Amp	rpm	cfm	cmh	dB
24"	600	220-240V	250	1.09	1425	7750	13100	71
30"	750	220-240V	378	1.64	1305	9150	15500	78
36"	900	220-240V	450	1.96	910	10220	17400	81

### ZENCO INDUSTRIES

Sales office : Rudrakshya, Shop No.03, Plot No.53A, Karanjade, A.R Construction,  
Dist - RAIGAD, Panvel - 410206.  
Regi. Address : A3,Niemall Market,PCNTDA, Chikhali Road, Purnanagar,  
Pune -411018.

Email : zenco.sales@gmail.com Mob : +91 08689928105 / 9309575344  
Web :http://www.zencoindustries.com OR http://www.zencoindustries.in



# JET FANS

FOR CAR PARK VENTILATION



## Features:

- ★ Dual Use
  - Regular use at ambient temperature
  - Smoke extraction in case of fire
- ★ Motors: IP55 Class F / Class H
- ★ Impeller specially designed for low noise
- ★ Fan dynamically balanced for low vibration
- ★ Customisable design
- ★ Reversible available on request
- ★ Fresh Air Fan and Smoke Spill Exhaust Axial Fan available

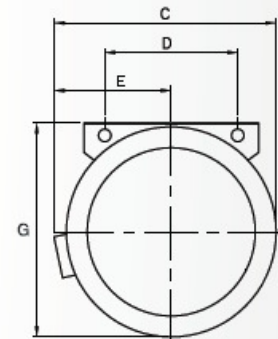
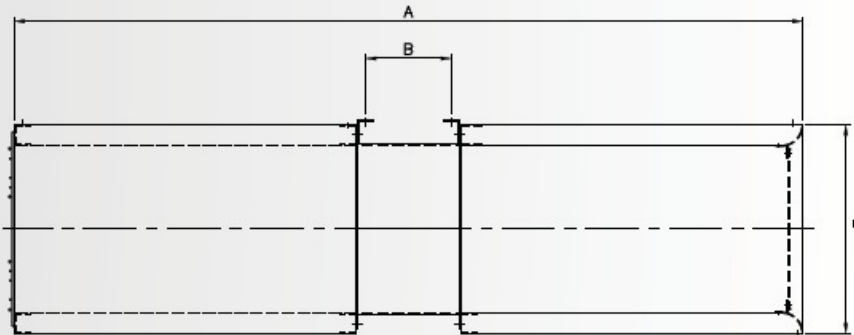


## TECHNICAL DATA

Model	Air Volume (CMH)	Thrust (N)	Motor (kW)	Pole	Speed (RPM)	Phase	Insulation	Sound Level (dB)
PJF315	2200/4450	5/22	0.17/0.8	4/2	1420/2840	3	H	52/65
PJF355	3250/6450	9/39	0.4/1.5	4/2	1420/2840	3	H	54/67
PJF400	4500/9050	15/59	0.5/2.0	4/2	1420/2840	3	H	55/69

## DIMENSION

Model	A	B	C	D	E	F	G
PJF315	1575	305	448	290	240	415	430
PJF355	1735	305	486	350	258	455	470
PJF400	1915	305	531	350	280	500	510

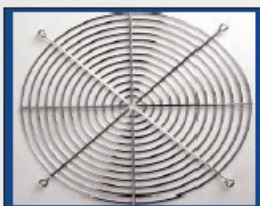


## SMOKE SPILL EXHAUST FAN

- For fresh air or exhaust
- Fan size from 315 mm to 1600 mm diameter
- Dual Use – Daily ventilation and smoke extraction
- Motors – IP55 insulation; Class F/Class H
- Casing material, as per requirement



## ACCESSORIES



Safety Screen



CO Detector



PLC Panel



Variable Frequency Drive

## ZENCO INDUSTRIES

Sales office : Rudrakshya, Shop No.03, Plot No.53A, Karanjade, A.R Construction,  
 Dist - RAIGAD, Panvel - 410206.

Regi. Address : A3,Niemall Market,PCNTDA, Chikhali Road, Purnanagar,  
 Pune -411018.

Email : [zenco.sales@gmail.com](mailto:zenco.sales@gmail.com) [zenco.enquiry@gmail.com](mailto:zenco.enquiry@gmail.com)

Mob : +91 08689928105 / 9309575344

Web : <http://www.zencoindustries.com> OR <http://www.zencoindustries.in>

# JET FANS





**Air Circulator**



**Man Cooler**



**Exhaust Fan**



**Portable Air Blower**



**Axial Flow Fan**



**Jet Fan**



**AC / DC Cabin Fan**



**Tea Withering Fan**



**Centrifugal Blower**



**Air Ventilator**



**Roof Extractor**



**Drum Fan**

# Contact Us:

📞 Nitin Nalawade - 8689928105

📞 Sunita M. - 9309575344



## PRICE LIST WEF 1<sup>st</sup> August, 2017

### EXHAUST FAN

Confirming to IS: 2312

Sweep		RPM	Supply Volt	Power Watt	PRICE (₹)
inch	mm				
9	230	1420	230	40	2015
12	300	920	230/415	45	3715
12	300	1420	230/415	82	3825
15	380	920	230/415	78	4125
15	380	1420	230/415	150	4230
18	450	920	230/415	132	5985
18	450	1420	230/415	370	6485
24	600	720	230/415	240	9905
24	600	920	230/415	500	10305
36	900	570	415	740	27225
36	900	720	415	1200	27695

### AIR CIRCULATOR

Confirming to IS: 2997

inch	Sweep		RPM	Supply Volt	Power Watt	Pedestal	PRICE (₹)	Wall-Bracket
	mm	Wings						
18	450	3	1440	230	90	7475	7145	
18	450	4	1440	230	90	7475	7145	
24	600	2	1440	230	115	8315	8045	
24	600	3	1440	230	125	8465	8185	
24	600	4	1440	230	160	8775	8495	
30	750	4	1440	230	200	10205	9925	

### MAN COOLER

Confirming to IS: 6272

Sweep inch	Sweep mm	Supply		RPM	Power		Pedestal	PRICE (₹)	
		Volt	Phase		Watt	HP		Wall	Tubular
12	300	230	Single	2850	250	0.33	21665	20185	-
12	300	415	Three	2850	250	0.33	20615	19215	-
19	480	230	Single	1440	375	0.5	23155	21515	24105
19	480	415	Three	1440	375	0.5	21555	19915	22405
19	480	415	Three	2900	1800	3.0	27375	25745	28465
24	600	230	Single	1440	500	1.0	24755	23115	25845
24	600	415	Three	1440	500	1.0	22855	21205	23965
30	750	415	Three	1440	1400	2.0	28255	26405	29955
36	900	415	Three	960	1500	2.0	38155	36835	40015
36	900	415	Three	1440	2000	3.0	36265	34945	38305
40	1000	415	Three	960	3500	5.0	41705	40505	42705
48	1200	415	Three	960	3700	5.0	58405	56905	60605

### PORTABLE AIR BLOWER

Sweep inch	Sweep mm	Supply Volt	Power Watt	RPM	PRICE (₹)
10	250	220-240	240	2815	13,650 /-
12	300	220-240	350	2775	16,250 /-

Note:

i) This cancels all our previous price list, ii) Prices are subject to change without prior notice  
iii) GST as per applicable, will be extra at the time of supply, iv) Prices are on ex-works basis

Approved by SAIL, BHEL, Ordnance Factories, Railways & other Government and Private Organisations