

CE

Special Features

- Robust two piece design
- The diaphragm is welded to the body to ensure separation of the filling fluid from the process medium
- All SS construction

Application

- Diaphragm seals are designed to isolate the sensing element of pressure gauges and pressure switches from process fluids that they may be corrosive, viscous, sedimentous and / or with a high temperature.

Specifications

Standard Version

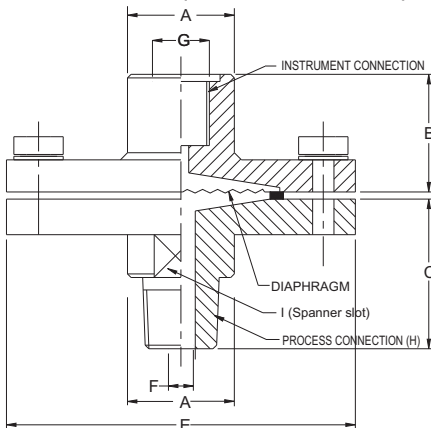
(Compatible models : PPS, SF6, WP6, WP4, DD1, DD2, DB, BEC, DEC)

Seal type & Range	: D85 = -1 to 0 kg/cm ² & 0 to 70 kg/cm ² (Standard)
	: D65 = 100 kg/cm ² to 250 kg/cm ²
Process temperature	: -40°C to 200°C or as per fill fluid
Instrument connection	: 3/8" BSP (F)
Process connection	: 1/2" BSP (M)
Fill fluid	: Silicon Oil - DC 200
Mounting	: Direct (without capillary)

Diaphragm	: AISI 316L SS
Top chamber	: AISI 304 SS
Bottom chamber	: AISI 316 SS
Nuts / bolts	: AISI 304 SS
Sealing gasket	: PTFE

Dimensions - Standard Version

TYPE "D85" (STANDARD VERSION)

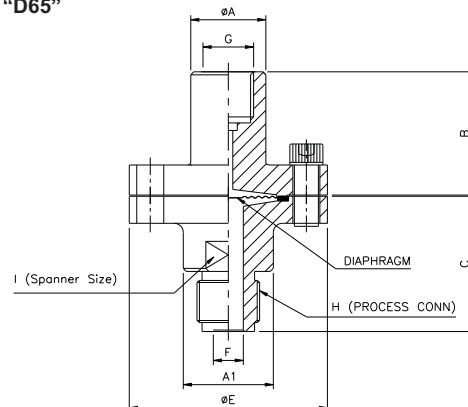


A	~ B	~ C	E	F	G	H	I	Approx. Wt. #
30	31	44	85	Ø10	3/8" BSP(F)	1/2" BSP (M)	26	1300.0

(# Weight in grams with box for Standard Model.)

Notes : • Drawings are not to scale. • All Dimensions are in mm.

TYPE "D65"



A	A1	~ B	~ C	E	F	G	H	I	Approx. Wt. #
25	30	41	45	66	Ø10	3/8" BSP(F)	1/2" BSP (M)	25	900.0

(# Weight in grams with box for Standard Model.)

How to Order							Example				
Basic Model							DDS				
Code											
Optional Extras											
[It is recommended that the MOC of Diaphragm should be equivalent or superior than the MOC of Bottom chamber.]											
Type											
D85 -1 to 0 kg/cm ² & 0 to 70 kg/cm ² (Standard) D65 100 kg/cm ² to 400 kg/cm ²							XXX				
Instrument Connection (Select this option when dry seal is required)											
2BF ¼" BSP (F) 3BF 3/8" BSP (F) (Standard) 4BF ½" BSP (F) 4NF ½" NPT (F) 2NF ¼" NPT (F)							XXX				
Top Chamber											
S4 AISI 304 SS (Standard) SL AISI 316L SS S6 AISI 316 SS							XX				
Diaphragm (* Range up to 21 kg/cm ²)											
SL AISI 316L SS (Standard) HC Hastelloy 'C' TI Titanium IN Inconel 600							XX				
MO MONEL SL Silver* TN Tantalum											
Sealing Gasket											
TF PTFE (Standard) MT Metal							XX				
Bottom Chamber (* Refer Pressure v/s Temperature table below.)											
S4 AISI 304 SS		HC Hastelloy 'C'		MOC OF BOTTOM CHAMBER		PRESSURE V/S TEMPERATURE				XX	
S6 AISI 316 SS (Standard)		TN Tantalum				20°C	40°C	60°C	80°C		100°C
SL AISI 316L SS		PV PVC*		PVDF		10 kg/cm ²	10 kg/cm ²	10 kg/cm ²	7 kg/cm ²	4 kg/cm ²	2 kg/cm ²
TI TITANIUM		PD PVDF*		PP		10 kg/cm ²	10 kg/cm ²	6 kg/cm ²	4 kg/cm ²	1 kg/cm ²	NA
MO MONEL		PP Polypropelene*		PVC		10 kg/cm ²	10 kg/cm ²	4 kg/cm ²	1 kg/cm ²	NA	NA
Process Connection											
2BF ¼" BSP (F)		2NF ¼" NPT (F)		2NM ¼" NPT (M)		2BM ¼" BSP (M)		M20 M20 x 1.5 (M)		XXX	
3BF 3/8" BSP (F)		4NF ½" NPT (F)		4NM ½" NPT (M)		3BM 3/8" BSP (M)		M33 M33 x 1.5 (M)			
4BF ½" BSP (F)		5NF ¾" NPT (F)		5NM ¾" NPT (M)		4BM ½" BSP (M) (Standard)					
5BF ¾" BSP (F)						5BM ¾" BSP (M)					
Protection On Wetted Parts (* With bore diameter 10 mm minimum & for connection size ½"& above only.)											
PL PTFE Lining On Bottom Chamber - 2 mm THICK (Max. Up to 150°C)*							XX				
PT PTFE Protection For Diaphragm (Max. Up to 150°C) (Suitable for Pressure Ranges only)											
PC PTFE Coating On Diaphragm (Max. Up to 315°C)											
Filling Fluids (*Consult factory for specifications, price and delivery.)											
S1 Silicon DC 200 [-40 to 205°C] (Standard)			S3 Silicon DC 710 [7 to 371°C]				XX				
FG Food Grade OIL [-20 to 140°C]			SY Syltherm 800 [-40 to 315°C]								
S2 Silicon DC 704 [10 to 337°C]											
Remote Mounting (With capillary of Max. Up to 6 Mtrs.) Please Consult Factory if Required Length Above 6 Meter)											
Specify In Meters (e.g. 1.5 = 1.5 METERS 2.0 = 2 METERS)							3Mtr.				
Capillary											
S4 AISI 304 SS			S6 AISI 316 SS				XX				
Capillary Covered With Armour (Applicable with Capillary is Selected)											
S4 AISI 304 SS		S6 AISI 316 SS		PC PVC (Ambient Temp. Max. 60°C)			XX				
Other Options											
HLT Helium Leak Test			WOI Dry Seal Only Without Instrument				XXX				
CNS Conformity as per NACE Standard			MTC Material Test Certificates*								
* Material test certificates will be provided for wetted parts only with chemical composition testing. For others, please consult factory.											
Refer Datasheet EE for selection of Flushing Rings.											
Ordering Example: DDS - XXX - XXX - XX - XX - XX - XX - XXX - XX - XX - 3Mtr. - XX - XX - XXX											
For Other Optional Items, Please Contact Factory For Delivery And Minimum Quantity Of Order.											
Note : Specifications and dimensions given in this product catalogue represents the state of engineering at the time of printing. Modifications may take place and materials specified may be replaced by others without prior notice.											