



**Make Things Simple**

# ***E-Focus Industrial***

## **Leading Manufacturer on Biometrics & Smart Card & Patrol Devices/Solutions**

Message to (+86) 158 155 010 89  
When you use cellphone or dial from other area outside China, please call (+86) 755 8341 8779/8825 7909  
or email us at [info@securitcn.com](mailto:info@securitcn.com)



## **Introduction of E-Focus**

*We, E-FOCUS, are Efficient, Creative, Organized, Reliable and Excellent for your choice.*

Since 1999, E-Focus are leader in the development of fingerprint applications, comprising R&D, design and manufacture. We have been offering core fingerprint algorithm technology and mature embedded application products. We have our own in-house facility for research, development, design, production and sales. Implementing mature control systems on creativity and innovation, R&D Members, with 10+ years experience in this field, sustain our core competencies and key success factors to occupy the high top of biometric/smart card application field, fingerprint/card products are featured by the integration of their excellent system design and the precision in algorithms. We offer our global clients with fingerprint products of competitive price, superior quality and good performance.

We are the leading supplier, producer and manufacturer of Biometric fingerprint/smart card

Message to (+86) 158 155 010 89  
When you use cellphone or dial from other area outside China, please call (+86) 755 8341 8779/8825 7909  
or email us at [info@securitcn.com](mailto:info@securitcn.com)

products. We achieve this because we have the fastest matching algorithm, the largest

number of features, easy to customize, reliable and all at the lowest cost.

And we are the choice for OEMs, ODMs, distributors, integrators and dealers. We will happily

work with you.

#### History :

1999: Concentrated on time tracking and access control security, making time attendance

terminals, access control terminals with smart card and biometrics technology.

2000: Implemented Top-technology oriented strategy, with continuous high speed of

developing and expanding, obtained leading role in biometrics appliances.

Message to (+86) 158 155 010 89

When you use cellphone or dial from other area outside China, please call (+86) 755 8341 8779/8825 7909

or email us at [info@securitcn.com](mailto:info@securitcn.com)

2002: Spread core technology to Security and Information Technology field, started to make

Door Lock, Payment System etc. obtained good shares of market

2004: Started to utilize telecom tech, launched door phone, cell phone jammer, GPS ammer

etc into market, and offered OEM/ODM products in a big scale for international market.

2005: Implemented Global developing oriented strategy, Aimed at obtaining satisfaction from

Global Customers and distributors.

2007: With great success in Global Market, our products have been distributed to 38

countries and regions including America, Europe, Australia, Japan ...etc.

2008: With efforts of R&D, we are become a leading biometrics/smart card solution for many

Message to (+86) 158 155 010 89

When you use cellphone or dial from other area outside China, please call (+86) 755 8341 8779/8825 7909

or email us at [info@securitcn.com](mailto:info@securitcn.com)

other industrial applications under our reliable, excellent, creative and costless solutions,

launching biometrics POS, Mobile type Biometrics units ect including other new technologies.

## Content

I	HARDWARE SYSTEM CONSTITUTION.....	5
II	PRODUCT FUNCTION & CHARACTERISTICS.....	6
III	EQUIPMENT INSTALLATION .....	10
IV	OPERATING STEPS .....	13
V	INSTRUCTIONS ON USE OF SOFTWARE .....	14
VI	INSTALLATION INSTRUCTIONS ON SOFTWARE .....	15
VII	OPERATION ON SOFTWARE .....	17
VIII	MATTERS NEED ATTENTION & SYSTEM MAINTENANCE.....	35
IX	SOLUTIONS ON FREQUENT MALFUNCTIONS.....	36
X	PACKING, TRANSPORTING AND RESERVING .....	37
XI	CUSTOMER SERVICE AND PROMISE ON TECHNIQUE SUPPORT .....	38
XII	GUARANTEE CARD INCLUDING GUARANTEE ITEMS .....	40

## I Hardware system constitution

The patrol managing system consists of managing computer, patrol apparatus, patrol spot, lithium cell, data cable, knowledge wares ,

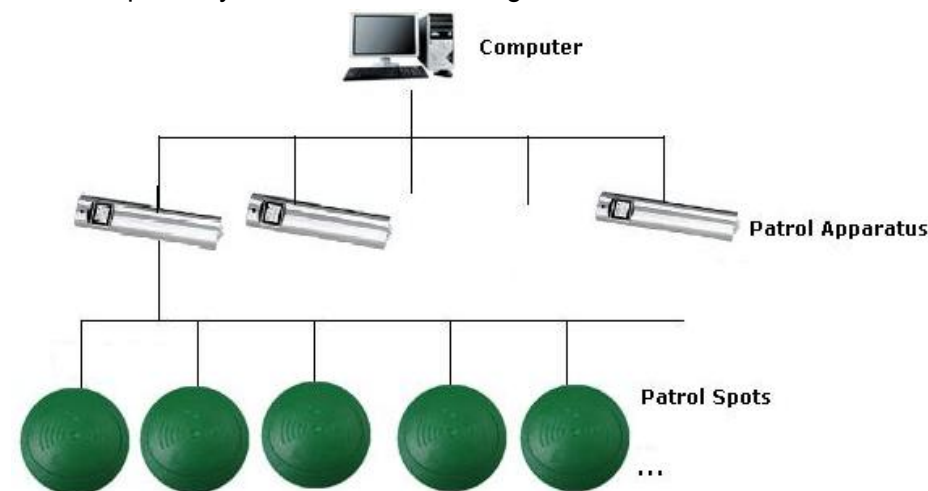
Message to (+86) 158 155 010 89

When you use cellphone or dail from other area outside China, please call (+86) 755 8341 8779/8825 7909

or email us at info@securitcn.com

leather sheath and printer.

There is patrol system as below showing:



## II Product function & characteristics

### 1). Stainless steel patrol apparatus



Apply to the patrol notes' collecting, memory and communication.

Employ microcomputer design: apply to collecting the patrol information of both the spots and personnel.

Adopt stainless steel shelter, water-proof, quake-proof, anti-magnet, strong enough to wear well.

Single bond operation, easy and convenient.

Data collecting: download the patrol notes through a direct junction with computer by a communication cable; very easy to

to (+86) 158 155 010 89

use cellphone or dail from other area outside China, please call (+86) 755 8341 8779/8825

at info@securitcn.com

operating and use.

Built-in with particular 3.6V chargeable lithium cell.

A minimum restoring to 7200 notes.

Built-in with a real-time clock.

Direct to handle for the acousto-optic prompt function.

2). Color screen induction-motor patrol apparatus



Metal construction: metal shelter, water -proof, quake-proof, heat-fast and low temperature-fast.

Color screen with Chinese: secondary Chinese character library, information about patrol spots and personnel are showed in Chinese with colors.

Support language: can be simple or traditional Chinese and English etc.

Intellective navigation: to show next patrol spot and prompt on missed spots.

Incidents: can set 30 incidents.

Early warning: function of warning memory.

Fail-safe nature: data can be stored for 30 years after power-fail.

Low power consumption: to record 9999 data by once charge.

Efficiency download: to download 9999 records with 90 seconds.

3). Noctilucence patrol spots used as to mark patrol spots



With water-proof, anti-magnet and quake-proof functions, it can be installed anywhere without influences from environment.

Induction-motor card is a passive reserving instruments which is built-in patrol spots; Dispense with power and easy to install.

Message to (+86) 158 155 010 89

When you use cellphone or dail from other area outside China, please call (+86) 755 8341 8779/8825 7909

or email us at info@securitcn.com

4). Personnel card



Non-contact type TI-ID card can be used reliably in rainy, snowy, frozen and dusty days etc.

It's a made-to-order high sensitivity card, to make sure the distance to log and reduce the power consumption of the patrol apparatus.

Personnel card with a minimum 20 years useful life.

5).Communicate cable



Particular cable is used to communication between patrol apparatus and computer, which is smart in volume, high credibility, to spare users' trouble on connecting external power, and do not need expensive communicate fixture, all deduct the cost of user system.

Plastic is made with high credibility and top grade figure;

Wiring system communication to use neither external power nor the patrol apparatus' power; Which with a high transporting speed of 115200.

6). Stainless steel charger



Its cell adopt a full automatic charger, a microcomputer controlling CMOS chip inside to inspect automatically, which has functions on cell's constant-current power charge and discharge, which is good for cell's useful life.

Message to (+86) 158 155 010 89

When you use cellphone or dail from other area outside China, please call (+86) 755 8341 8779/8825 7909

or email us at info@securitcn.com

7). Charger for color screen patrol apparatus



Made-to-order full automatic charger, a microcomputer controlling CMOS chip inside to inspect automatically, which has functions on cell's constant-current power charge and discharge, which is good for cell's useful life. Put the waiting charge cell on the charger in right ways. Insert the charger in 180-240V electrical outlet, then it will recognize the cell automatically, turn into charging after discharging. The power's indicator light on meanwhile the

charger's light is blinking.

Once charging complete, the saturation light on(it is normal as the lights all will be off for the external disturb), the fast charge is finished, once time allowed, to secure a best charging effect, a continued 1-2 hours trickle charging is better.

Input voltage: AC 180-240/50-60Hz

Input current: 30mA

Output current: 250mA

Output voltage: 4.2 V

Fit capacity range: 240-2000mAH

Using environment: Temperature ranged at -5~ 40℃

Humidity ranged at ≤90%

8). Lithium cell of the stainless steel patrol apparatus



It adopts a high volume lithium cell core, which supplies a steady permanent power.

Cell Voltage: 4.2V

(+86) 158 155 010 89

use cellphone or dail from other area outside China, please call (+86) 755 8341 8779/8825

at info@securitcn.com

Capacity: 900mAH

**Notice:** The cell is an electrical core of confectioning product, which doesn't take a protective circuit, it is forbidden to short circuit of its 2 poles as a single cell, nor separate it at dangerous place.

9). Lithium cell of the color screen patrol apparatus



The cell adopt a high volume lithium cell core has functions on cell's constant-current power charge and discharge, which supply a steady electric energy for the apparatus.

Cell Voltage: 4.2V

Capacity: 900Mah

### III Equipment installation

1). Deduction-motor card installation

- a. First to find a install place(shall be away from the floor more 1.5m), then drill 2 holes with a churn drill and insert the glue plug.
- b. Open the close over and fix the board with screws.
- c. Fix the close over again be well.
- d. Or paste it on the wall with a double-face glue( which will causes falling off for not strong enough).

2). Instructions on the stainless patrol machine

- a. Fix the cell in the machine with right way
- b. Enter the switch, the blue light be on, meanwhile the buzzer ring, then can induction-motor the patrol spot, the red light on, the machine restore the data automatically;

Message to (+86) 158 155 010 89

When you use cellphone or dail from other area outside China, please call (+86) 755 8341 8779/8825 7909

or email us at info@securitcn.com

- c. Operate with power, no operation after 6 seconds, the machine will turn off automatically;
- d. The prompt about the data saturation: power on, the red light ring 6 times continually, it means the data full, then please download the data through computer then can be used;
- e. The prompt of low voltage: power on, the blue light and buzzer operate 6 times at the same time, the main engine cell's voltage is not enough, then please change it, and the patrol machine can go on to patrol more than 400 spots;
- f. Abnormal on time: if the main machine is out of power or the cell is taken away for a long time, its time will reset, then power on the blue light will twinkle 10 times, the machine can no more use, must check the time through the computer then can be use again;

Notice: When the power short, please change cell in time, during the process, the whole job shall be completed in 5min, or else, shall check its constant time with its main machine then can be used again.

### 3) Instructions on the color screen machine:

- a. Put the cell group inside the machine in right way;
- b. Enter the power on switch, start the patrol machine, then it shows constant time, cell power quantity, people's name and routine name, and the picture blinking, then it means that the patrolling person can work normally;
- c. At the main interface, can read the records by pressing the left or right key;
- d. At the main interface, when people read the card,
  - normal patrolling: if it is the spot in routine, the machine will show the relative name of the patrolling routine;

Message to (+86) 158 155 010 89

When you use cellphone or dial from other area outside China, please call (+86) 755 8341 8779/8825 7909

or email us at [info@securitcn.com](mailto:info@securitcn.com)

- unknown place: if the spot is not in the routine, then it shows as unknown place, then it keep the records as card number ways;
- e. Repeat patrolling: when the card read the number once and again, the patrol apparatus will prompt that is repeat patrolling, while the record will restore;
- f. Omitting prompt: when people not patrol according to the routine rule, the machine will prompt that is omitting, then the record will restore automatically;
- g. Low voltage prompt: when the power is full, the main interface will show a green mark, when the cell is used to level 2, the orange mark arise, when the cell is below level 2, the red mark; each start will show that: low power, recharge please. Then it still can work to 1000 records, a suggestion is that customer shall charge in time once the low power prompt.
- h. Data early warning: when the data is restored to twice of the machine's space, the apparatus will prompt that the volume is not enough and download right away;
- i. Data full prompt: when the data saturation, the apparatus will no longer to read data, only the data be downloaded and be emptying can be use normally;
- j. Communication prompt: when the apparatus is communicating with the computer, the machine will prompt that it is in communicating and do not off power, it is mustn't to turn off the machine, or else will cause the intermit of the data transporting, and the error arise, only the communication interface is closed then the machine can be use;
- k. Turn off automatically: when it is on the main interface, while none operation, the machine will turn off in 15seconds;
- l. Manual shut-down: at the main interface, enter the power key for

Message to (+86) 158 155 010 89

When you use cellphone or dial from other area outside China, please call (+86) 755 8341 8779/8825 7909

or email us at [info@securitcn.com](mailto:info@securitcn.com)

2seconds, the machine shut down;

- m. Incidents select: when the person read the patrolling spots, its left/right key are select key, press power key that is to restore, the machine will restore and return once there is no operation after 5 seconds

#### 4). Managing software installation

- a. To install the software according to said manual.
- b. To collecting data, its cable's DB9 joint's one pole shall be connected to computer's series interface, while its USB joint shall be connected to the machine;
- c. Any operation in the machine or computer's communicating work, the machine must be on Power-on status, or else the operation fail.

## IV Operating steps

- 1). According to the time range, patrolling spots, the worker patrol lies on the given routine, during the patrolling, he will read the spot using the patrolling apparatus;
- 2). During the reading, the apparatus will record present place name, date and time automatically;
- 3). After patrolling finished, hand in the apparatus with gathered data to managing people, transport the data in the apparatus to the managing computer and restore it through the joint of data cable with computer, then go inquiry and generate all kinds of statistic managing form according to the need of work. Meanwhile, the data in apparatus can be get rid of then be use again.

Message to (+86) 158 155 010 89

When you use cellphone or dial from other area outside China, please call (+86) 755 8341 8779/8825 7909

or email us at info@securitcn.com

## V Instructions on use of software

### 1). Functional particulars

- Said system designed in digital numerical sort, then use and set be smarter;
- To clear show its routine and attachment relationship between lower level and higher level, all adopt a tree style construction;
- Different routine can include same spots (one or more), this solved the problem of intercross place in different routines;
- Sorting freely to spots in each routines, and it can set stop time and special time to each place;  
The patrolling schedule is made monthly, and also a certain time scope;
- To more fit the patrolling people's situation, the system adopts 2 ways: the one is recognition of each one affix an induction-motor card, and another is when make patrolling schedule, the related personnel is made without an induction-motor affixed;  
The patrolling result can be organized with many conditions at random;
- The results can be statistic from month, time and personnel;
- To make sure the data used be safer, the operator's managing authority entitled by the system manager.

### 2). Configuration demands

Message to (+86) 158 155 010 89

When you use cellphone or dial from other area outside China, please call (+86) 755 8341 8779/8825 7909

or email us at info@securitcn.com

	Minimum configuration	Recommended configuration
CPU	PIII400MHz	PIII600MHz
Internal memory	64M	≥128M
Hard Disk	1G	≥10G
Operating system	MS Windows 98 (Chinese)	MS Windows 98/2000
Printer	A4 available	
Show set	800×600 16M color small character	

## VI Installation instructions on software

- 1). Patrolling spots installation: when install it, use the patrolling machine to read its ISN out, then record its relative place name;
- 2). To install its software, the managing software manager's initial code is NULL;
- 3). Its group setting: [resource management]- [personnel setup]-[patrolling group setup] add relevant patrolling group to the interface;
- 4). Routine management:[resource management]-[routine setup]-[patrolling routine management] add relevant patrolling routine to the interface;
- 5).Patrolling machine management:[resource management]-[equipment setup] attach the machine number to the routine in the interface

Message to (+86) 158 155 010 89

When you use cellphone or dial from other area outside China, please call (+86) 755 8341 8779/8825 7909

or email us at [info@securitcn.com](mailto:info@securitcn.com)

(meanwhile can add number from [ adding setup] in connecting interface);

- 6).Add personnel card, address card and incidents card: [communication management]-[select machine type]- [data download] interface; let the patrolling machine which read ISN of spots already be on-line with the computer through communicate cable correctly, at power ON status, press [ data download]-[ read information] to read the relevant information in patrolling machine, and then press [read information]- [ read data] to read data in the machine, press [ restore card number] to define the personnel card and address card in ISN, after this definition press [ Restore]-[Exit], which is a batch input of personnel card and address card;
- 7).Card Number setting: through the above 6<sup>th</sup> step, input the new card information into the card number setting, which can also be added by manipulating work;
- 8).Patrolling person management: [Resource management]-[Personnel setting]-[Patrolling group setting] to modify personnel at interface accordingly;
- 9).Routine spots management: [Resource management]-[Routine setup]-[Routine management] add the spots to the relevant routines;
- 10).Communication cut setting: [Communication management]- [Select machine type]- [Data download] select right port;
- 11).Patrolling setting: [Resource management]- [Incidents setting]-[Incidents setting] to define the relevant incidents well;
- 12).Plan setting: [Resource management]-[Plan setting]-[Plan management] to select a patrolling routine, and do relevant planning setting to it (details refer to the Instructions)
- 13).Data restoration: [Communication management]-[Select machine

Message to (+86) 158 155 010 89

When you use cellphone or dial from other area outside China, please call (+86) 755 8341 8779/8825 7909

or email us at [info@securitcn.com](mailto:info@securitcn.com)



type]-[Data reading], let the patrolling machine which read ISN of spots already be on-line with the computer through communicate cable correctly, on the apparatus' power on status, press [Data download]-[Information reading] to read relevant information inside, then press [Data download]-[Data reading] to read data inside it and press [Data restoration] to keep the data in the system;

14).Inquiry: [Data management]-[Data Analysis]to analysis the data and routines,[Data management]-[Data Inquiry] and then to do relevant inquiry and printing accordingly;

**Remarks:**

- a. Before data inquiry, if there is any new data restoration or change in routine, address and plan, analysis again is necessary;
- b. After plan setting finished, to change address, person and apparatus number,only need analysis the data again without amending on plan.

## VII Operation on software

System start



After software installation finished, then can through **Start/ Program/ Patrol system**, click [Patrol system] item, it start, a system interface

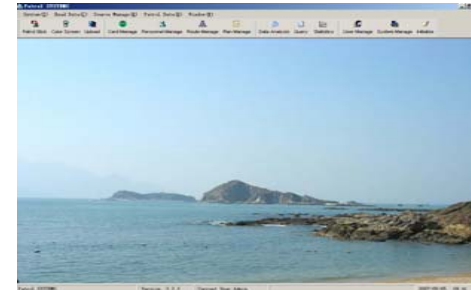
Message to (+86) 158 155 010 89

When you use cellphone or dail from other area outside China, please call (+86) 755 8341 8779/8825 7909

or email us at info@securitcn.com

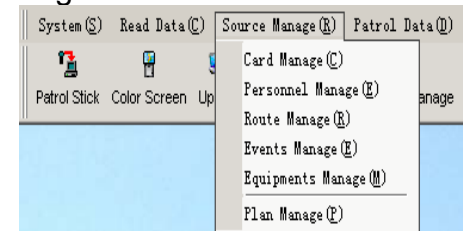
and loading window arise as left.

If it is the first time to use, please select manager to log on, the code is null, Enter directly, then you are logging on as manager's identity, please change its code at once.

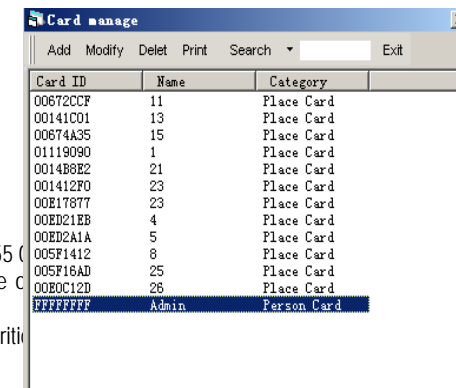


To use this system to do everyday work at the 1<sup>st</sup> time, shall built a necessary basic data form, to modify the system parameter if need.

### 1). Resource Management.



#### a. Card number setting



Message to (+86) 158 155 010 89

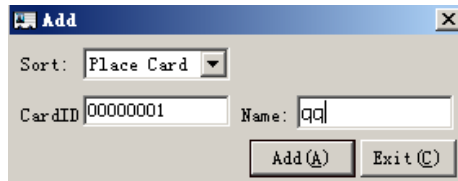
When you use cellphone or dail from other area outside China, please call (+86) 755 8341 8779/8825 7909

or email us at info@securitcn.com

(+86) 755 8341 8779/8825

At card management, can add, delete, modify, print and inquiry

1. Card number adding manually:



As for the kinds select, to select the kind as: address card, personnel card, incident card, the incident card is used by stainless steel patrolling machine relevantly.

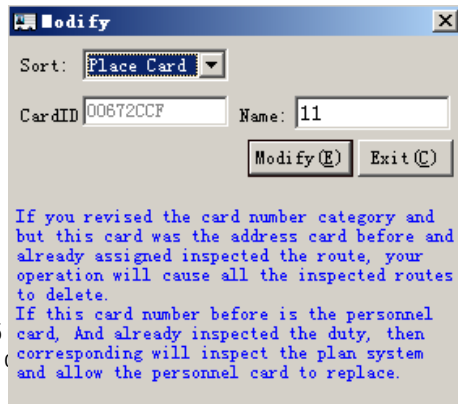
Address card name length: 7 characters or 14 bytes;

Personnel card name length: 4 characters or 8 bytes;

Incidents card name length: 7 characters or 14 bytes;

Inside, the card number is necessary, can also be a virtual null card number to represent if not.

2. Modify on card No.



Message to (+86) 158 155 7909  
When you use cellphone or  
or email us at info@securitcn.com

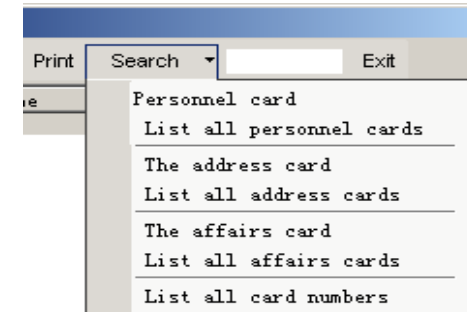
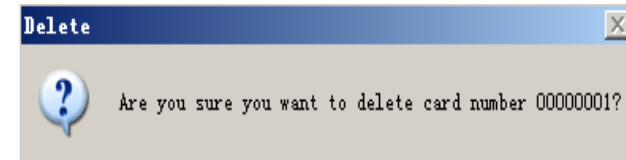
(+86) 755 8341 8779/8825

Please pay more attention on the modifying prompt when do the modification, and shall be operated prudently, especially can only modify its Kind and Name.

3. Card No. Delete:

To select card need deleting, press Delete then can do this, please do this prudently for it can not be recovered once be deleted.

4. Card No. Inquiry:



You can inquiry relevant card No and print with categories according kind, name and number.

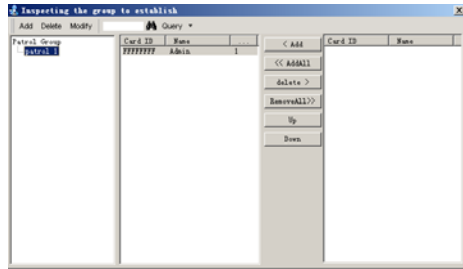
b. Patrolling Group Setting

Adding a patrol person group

Message to (+86) 158 155 010 89

When you use cellphone or dail from other area outside China, please call (+86) 755 8341 8779/8825 7909

or email us at info@securitcn.com

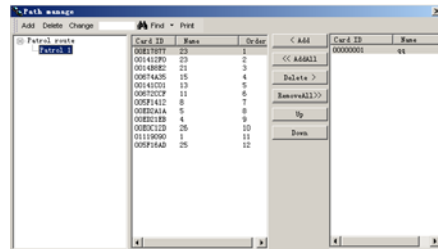


To add relevant groups of the patrolling personnel, can be convenient to manage them, hereby can adding, delete and rename;

The right line is the name of group, middle is its group member's name, the right line is the available personnel name, to select a certain group, to add member to its relevant group through function key at middle; change the personnel's order in group through Up & Down function key;

c. Routine setting

Routine management



To add relevant routines accordingly, to manage it through add, delete and rename;

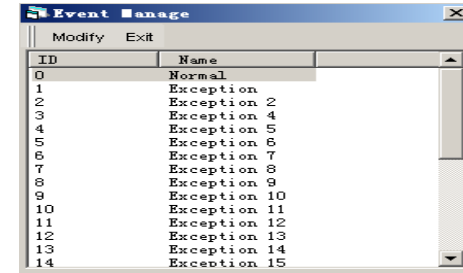
The right frame is the name of routine, middle is places happed in routine, the right one are available patrolling spots; to select group, to add placed into relevant routine through middle function key;

Message to (+86) 158 155 010 89  
 When you use cellphone or dail from other area outside China, please call (+86) 755 8341 8779/8825 7909  
 or email us at info@securitcn.com

Shift-up: change relevant places' order at form;

Shift-down: change relevant places' order at form;

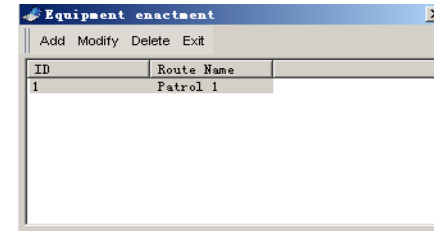
d. Incident setting:



The serial No. 0-29 is incidents No., can modify the name through its relevant name, 0-29 are steady No., this incident is appropriate for color screen machine;

If its card number arise as its serial No., it is appropriate for stainless steel machine; whose card No.'s adding and modify through management of card Number to set;

e. Equipment setting



This operation is to attach the machine with its relevant routine, to manage conveniently, if the prompt apparatus no adding while collecting information, can hereby add relevant routines.

One patrol machine can only be fit for one routine

While one routine can be corresponding for many apparatus

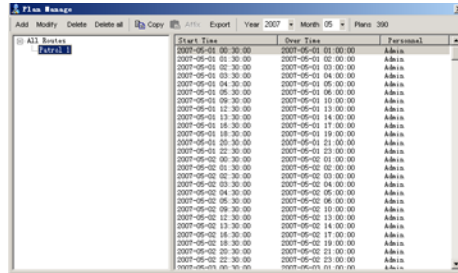
Message to (+86) 158 155 010 89  
 When you use cellphone or dail from other area outside China, please call (+86) 755 8341 8779/8825 7909  
 or email us at info@securitcn.com

The stainless steel machine's serial Number scope: 0-255;

The color screen one be ranged: 0-65535

f. Schedule setting

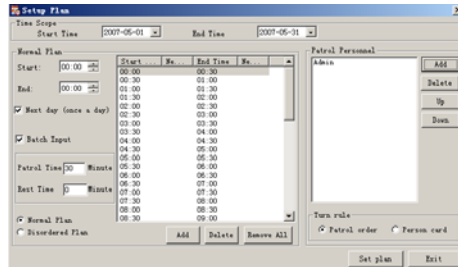
The said setting is made monthly, each routine be set as single;



To select a schedule then press [Modify schedule] to delete single schedule and personnel change;

Different routines, months while same schedule, a simple copy and paste work is ok; at system parameter to select function of [Start schedule copy automatically] then it will copy the last month's schedule at the first logging on every month, if can't copy with month step.

1. Normal schedule



Part one: [date select], to select the detail date on which made the schedule;

Message to (+86) 158 155 010 89  
 When you use cellphone or dial from other area outside China, please call (+86) 755 8341 8779/8825 7909  
 or email us at info@securitcn.com

Part two: [Patrol Personnel], first to press [Add] to select the man who will make the schedule from personnel list, click [Shift-up] and [Shift-down] to change order in list;

[Patrol Order]: to patrol circulative according to the order in list;

[Personnel card]: to patrol according to the member card; (e.g. the man to patrol firstly to induction-motor his card, then the patrolling records belong to him as before the next one induction-motor his card.)

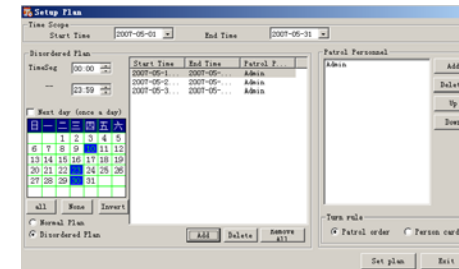
Part three: [Patrol circle]: to regulate patrol man's time; which has both batch input and individually input.

Batch input: patrol schedule with regular rules input: can set schedule at random.

[Morrow]: the next day, the patrol time happened after 23:59; (e.g. 19:00-01:30, shall be clicked in front of [Morrow], for its different date), after setting-up of all parameters, press [OK] to exit and restore.

2. Non-regular schedule

User-defined date, time and non-regular schedule setting



2). Communication Management

Below operations shall be completed under patrol apparatus' power ON

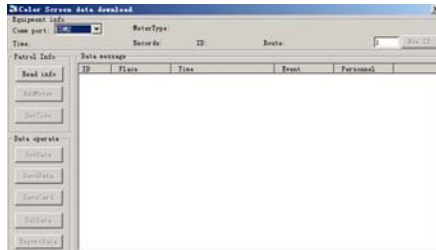
Message to (+86) 158 155 010 89  
 When you use cellphone or dial from other area outside China, please call (+86) 755 8341 8779/8825 7909  
 or email us at info@securitcn.com

status



a. Data download

To read relevant data inside:

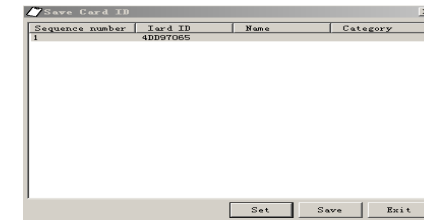


1. Joint the patrol apparatus and managing computer in right way, press [Read data] to numerate apparatus information such as: serial number, records, the very operator's serial number and conjunction port.
2. The apparatus must numerate its message before numerate patrol notes;
3. New apparatus can add in system or not through numerating message, and also can be added here;
4. Machine number set-up: that is to change the inside serial number of the machine, if the machine has been set a corresponding routine, so please do not change it at random;
5. Time set-up: that is the time about the apparatus, it will check time automatically when the data is downloading; to numerate data inside and then go into relevant operation;
6. [Numerate data] to gain patrol data inside it;

Message to (+86) 158 155 010 89  
 When you use cellphone or dial from other area outside China, please call (+86) 755 8341 8779/8825 7909  
 or email us at info@securitcn.com

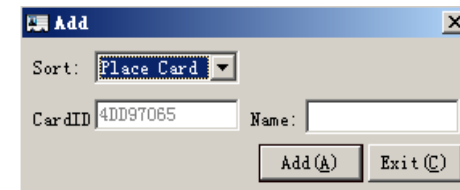
7. [Restore data] to keep all data numerated into the computer, which can be inquired at original data;
8. [Restore Card No.] to restore the new card number which doesn't exist in computer,(be used in batch input and storage of address card and personnel card, which replaced the trouble and mistake of hand input.) it will explained detailed as follow:
9. Delete data] to delete all data inside it, (it is unrecoverable, do be prudent to operate)

b. Restore Card No.



To show new card number unregistered inside system.

c. Add Card No.



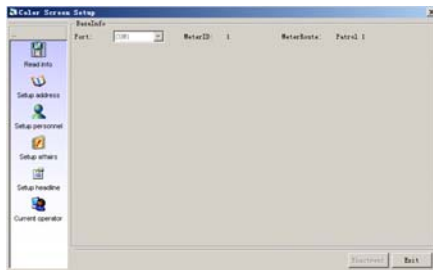
1. At [Restore card number] double click new card number then can go into [Add card number];
2. Optional types: personnel card and address card;
3. Address card name length: 7 characters or 14bytes;  
 Personnel card name length: 4 characters or 8 bytes;  
 Incidents card name length: 7 characters or 14 bytes;  
 Press [OK] restore and exit.

Message to (+86) 158 155 010 89  
 When you use cellphone or dial from other area outside China, please call (+86) 755 8341 8779/8825 7909  
 or email us at info@securitcn.com

- 4. [Set address list] add address in relevant routine into apparatus;
- 5. [Delete all] delete all address in existence inside;
- 6. Please select a relevant routine before adding address and then do relevant adding;
- ★ Do numerate data before adding any data to prevent repeat adding.

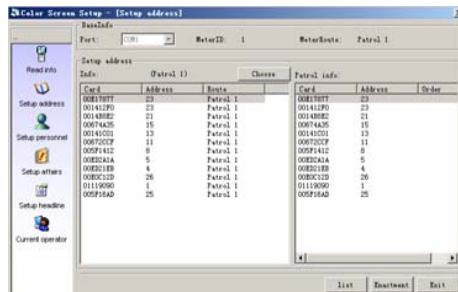
Data upload (this is to color screen machine only)

d. Read apparatus data



To gain equipment serial number and relevant routines name (all must be on power-on status)

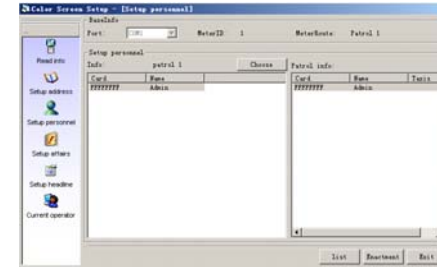
e. Setting address list



To upload the address in routines to the apparatus, so that it can show its Chinese name when card number is numerated at patrolling; left frame is function key, middle is patrol spot at routine, right frame

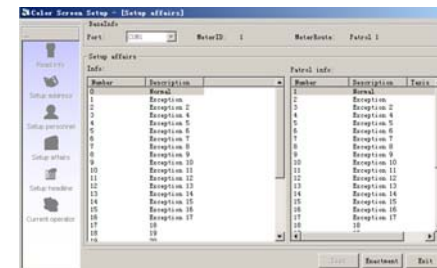
Message to (+86) 158 155 010 89  
When you use cellphone or dial from other area outside China, please call (+86) 755 8341 8779/8825 7909  
or email us at info@securitcn.com

- is patrol spot information at apparatus;
- To select a relevant routine need downloading machine, press SET to upload patrolling spots into the apparatus, and all former spots data be replaced once be refreshed;
- f. Set Personnel list



To upload personnel name to the apparatus to the effect that the patrol man can change relevant Chinese name in card number display; left frame is function key, middle is personnel in selected group, right frame is the information about the personnel; to select groups need downloading, press SET will upload the personnel to the apparatus, the former all personnel data will be replaced once it be refreshed;

g. Set incident list



Upload the incident name to the apparatus to the effect that the

Message to (+86) 158 155 010 89  
When you use cellphone or dial from other area outside China, please call (+86) 755 8341 8779/8825 7909  
or email us at info@securitcn.com

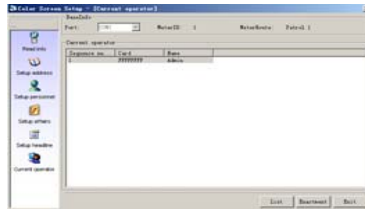
patrol man can take down any incidents happened, Left frame is function key, middle is incidents in existence, right frame is the incidents data inside.

The incident defined ad 30 items, after every incident refresh, press "SET" will replace present incidents directly.

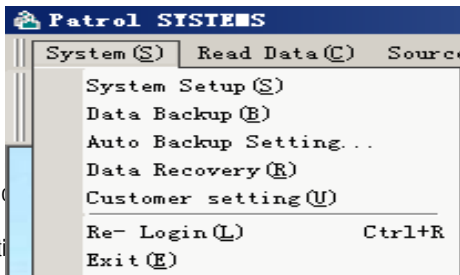
h. Setting title



i. Setting current operator



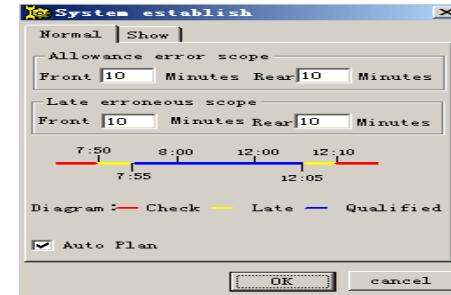
3). System management



Message to (+86) 158 155 7909 When you use cellphone or email us at info@securit

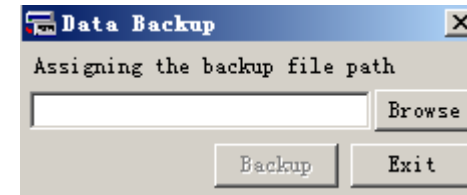
+86) 755 8341 8779/8825

a. system setting



- 1) Its communicating port set-up, to select accordingly (connect to computer' serial port);
- 2) Permissible error time, behind schedule time, to input permissible time (min as unit), this error is relevant patrol time range;
- 3) To start automatic copy function: if there is no schedule set-up at the beginning of each month, the software will copy a new schedule refer to the former one;

b. Data backup



Data backup, to restore all data backup as a document so that can inquiry and maintenance later;

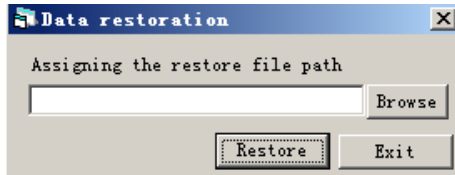
Message to (+86) 158 155 010 89

When you use cellphone or dail from other area outside China, please call (+86) 755 8341 8779/8825 7909

or email us at info@securitcn.com

Suggestion: This data backup do not be kept under the root directory of system.

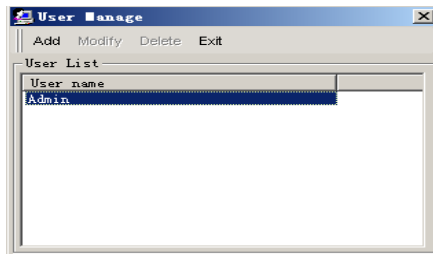
c. Data recovery



Data recovery: can revert the backup data to it was through this function.

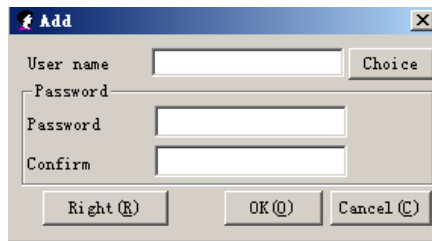
d. User setup

1. User management



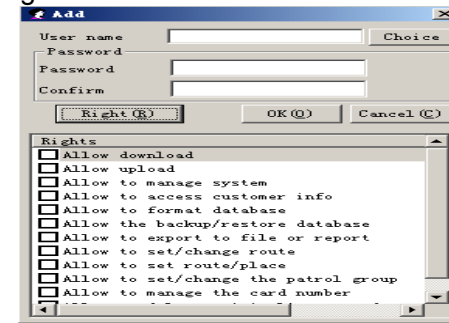
To add new operating manager and set code for him.

2. Set code



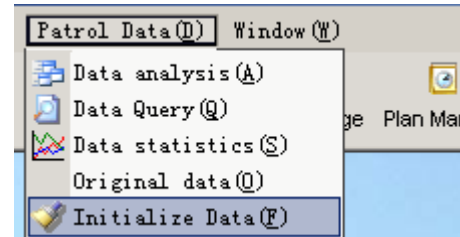
To select user, can reset code, operator can set his code only while the manager have the power to set operator and code

3. Power management

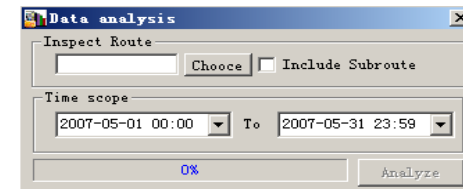


To entitle a certain software management operating right to manager in order to manage system better.

4). Data processing



a. Data analysis

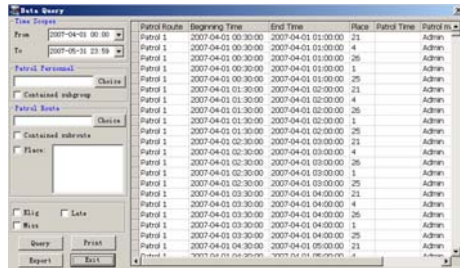


Can select certain routine, month and certain date to analysis, if it contains information of lower level routine, then must pitch on the



check box [Including lower level routine]. Must process and analysis data before the data inquiry and statistics, if inquiry data that is analyzed, no more analysis, if there is any modify or reset on schedule, must analysis data again before inquiry then the correct result will be.

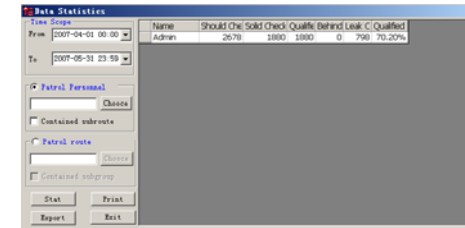
b. Data inquiry



According to different time, personnel, address, result condition, we can inquiry patrol result and print out as form. If there is renew schedule or address setup and numerating new data, must analysis data firstly then inquiry.

1. The right frame is the data area inquired;
2. [Date] can select year and month from pull frame, also can select a certain date from XXXX year XX month XX date to XXXX year XX month XX date, which is the time range of the data inquired;
3. Condition select, can according the patrol personnel, routine name, patrol spot inquiry, to select personnel and routine name, must click [ Select personnel], [Select routine] and then a dialog box arise, to select relevant data, if contain lower level data, then must pitch on check box [ Including lower level routine];
4. To inquiry data according to different conditions;

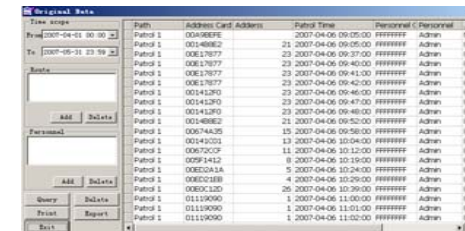
c. Data Statistics



According to different time, routines and personnel, we can inquiry patrol result and print out as form.

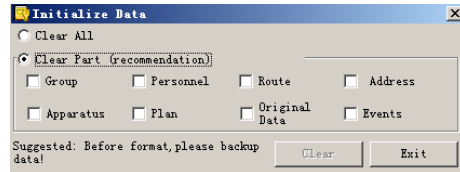
1. The left frame is the data area inquired;
  2. [Date] can select year and month from pull frame, also can select a certain date from XXXX year XX month XX date to XXXX year XX month XX date, which is the time range of the data inquired;
  3. Condition select, can according the patrol personnel, routine name, patrol spot inquiry, to select personnel and routine name, must click [Select personnel], [Select routine] and then a dialog box arise, to select relevant data, if contain data of the lower level routine and personnel, then must pitch on check box [Including lower level routine] and [Lower level personnel];
  4. To inquiry data according to different conditions;
- If there is data analysis in inquiry while no renew schedule or address setup and numerating new data, it is unnecessary to analysis data when result statistics.

d. Original data



This is to show all data download and kept by the apparatus, which can be printed by condition inquiry and then data export.

#### e. Database Initialization



To delete relevant data in database, which can be selective emptying and full emptying. Do be prudent for this operation, it can not be recovered once deleted.

## VIII Matters need attention & system maintenance

- 1).The use of computer shall abide by the common operative demands, can not close or restart at random, only can close or restart it after exit the patrol management system normally, or else may destroy data;
- 2).Once the low voltage prompt arise, please charge the cell immediately, or may cause the missing or error of the data;
- 3).Must numerate card among the domain of validity of the apparatus, get back the apparatus once the warning tone is heard;
- 4).The said system shall be managed and operated by appropriated personnel, the operator shall have certain experience about computer operation;

Message to (+86) 158 155 010 89

When you use cellphone or dial from other area outside China, please call (+86) 755 8341 8779/8825 7909

or email us at info@securitcn.com

- 5).Non-professional mustn't tear down any components of the system, nor modify and delete any document or folder;
- 6).Must notify the manufacturer or the appointed after-service department for any breakdown of the system, never deal with by oneself voluntarily lest any unnecessary lose.

## IX Solutions on frequent malfunctions

### 1). In-operation of the Apparatus

Firstly to check whether the cell pole is bad contact or not, maybe the cell is out of power, charge it soon. If neglect this low voltage and still use, it will discharge completely and the apparatus stop working; after complete discharge, it need more time to charge than other.

After above steps, it is still in breakdown or charge unavailable, please contact with the supplier.

**NOTE:** The data inside the patrol machine will not lose after complete discharge;

For strong strike on the cell, which may be ruined and cannot work normally.

- 2). Communication unavailable: make sure the transporting cable work normally and it was connected with the computer and data apparatus. If the computer is on line or communicate ports among PCs, there may be a port conflict. Then select other port at [ Ports] through [Data download].

In use, there are prompt function for may happened abnormal

Message to (+86) 158 155 010 89

When you use cellphone or dial from other area outside China, please call (+86) 755 8341 8779/8825 7909

or email us at info@securitcn.com

incidents:

CONTENT	CAUSE	DISPLAY	MEASURE
Low voltage warning	Low voltage of cell	Charge soon	Use it after full charge
Data Full	Much more Induction-motor times	Please download for full data	Use it after download
Error time or abnormal data	Bug operation		Reset computer and use it in right way (keep power on before induction-motor the card)
Start unavailable	Bad contact of the touch-chip of the cell		Wash clear the touch-chip both the cell and main machine
No light display	Too low voltage of the cell	No display	Charge the cell and use again

## X Packing transporting and reserving

- 1).The said system pack individual components according to their different configurations;
- 2).To transport said system shall under its original package, do not unfold

Message to (+86) 158 155 010 89

When you use cellphone or dail from other area outside China, please call (+86) 755 8341 8779/8825 7909

or email us at info@securitcn.com

package to transport, and pay more attention on rain and snow defending and mechanic destroy;

- 3).Packed product shall be kept in  $-20\sim 70^{\circ}\text{C}$  and relevant humidity shall be  $\leq 80\%$ , no corrosive gases exist, and be in well ventilated room or warehouse.

## XI Customer service and promise on technique support

For normal use while any quality problem arise, user can change the same type product among 3 months expiry day from the purchase date; have right to be maintained in 1 year for free; beyond 1 year of lifetime maintenance, there be a material fee for components change. But any acts occurred as follow, the said promise terminate thereby:

- 1).User who refit or dispose by himself and other operations cannot secure the integrity of both hardware and software of the product;
- 2).User who ruined part or the whole product for wrong operation as not abide by the instructions.
- 3). Safety Cautions
  - a. The said product is an equipment with full technicality, once breakdown happened in using process, please notify our after-service department or branch companies and agent on site to deal with the problem, avoid by all means to unfold at random, lest to ruin internal organization to damage your right and benefit.
  - b. Please refer to the instrument to use the said equipment's electrical

Message to (+86) 158 155 010 89

When you use cellphone or dail from other area outside China, please call (+86) 755 8341 8779/8825 7909

or email us at info@securitcn.com

characteristic, lest to damage it or user's equipment.

## XII Guarantee card including guarantee items

### Product Maintenance Guarantee Card

Customer shall please fill in below content and keep it carefully after purchasing the machine, in order to gain perfect after-service. Please read carefully the items given:

Customer's Name: \_\_\_\_\_ Customer's Telephone Number: \_\_\_\_\_

Product type: \_\_\_\_\_ Machine serial Number: \_\_\_\_\_

Purchase date: \_\_\_\_\_ Distributor: \_\_\_\_\_

Invoice Number: \_\_\_\_\_ Distributor stamp: \_\_\_\_\_

### Product Maintenance Guarantee Items

- 1) For normal use while any quality problem arise, user can change the same type product among 3 months expiry day from the purchase date; have right to be maintained in 1 year for free; beyond 1 year of lifetime maintenance, there be a material fee for components change.
- 2) The purchasing date shall refer to the date which is in the invoice or receipt note made by the distributor;
- 3) Claim to change a new product will be fail where there are any man-made package damage, while a maintenance service be available;
- 4) But any acts occurred as follow, the said promise terminate thereby:
  - (1) User who refit or dispose by himself and other operations cannot secure the integrity of both hardware and software of the product;
  - (2) User who ruined part or the whole product for wrong operation as not abide by the instructions.
- 5) Our product will be changed or maintained only depend on this Guarantee Card, and purchasing invoice or receipt is necessary;
- 6) Anywhere you bought our product, which can gain same service from nearby after-service center. If the problem is not solved well, please call or mail to our

Message to (+86) 158 155 010 89

When you use cellphone or dial from other area outside China, please call (+86) 755 8341 8779/8825 7909

or email us at info@securitcn.com

Message to (+86) 158 155 010 89

When you use cellphone or dial from other area outside China, please call (+86) 755 8341 8779/8825 7909

or email us at info@securitcn.com

customer service department, sure we will solve it as soon as possible;  
7). Right to modify and interpret about above items is attributed to said company.

Date	Maintenance records	Handle person

*Thanks for Using E-Focus Patrol System!*

Message to (+86) 158 155 010 89  
When you use cellphone or dial from other area outside China, please call (+86) 755 8341 8779/8825 7909  
or email us at [info@securitcn.com](mailto:info@securitcn.com)